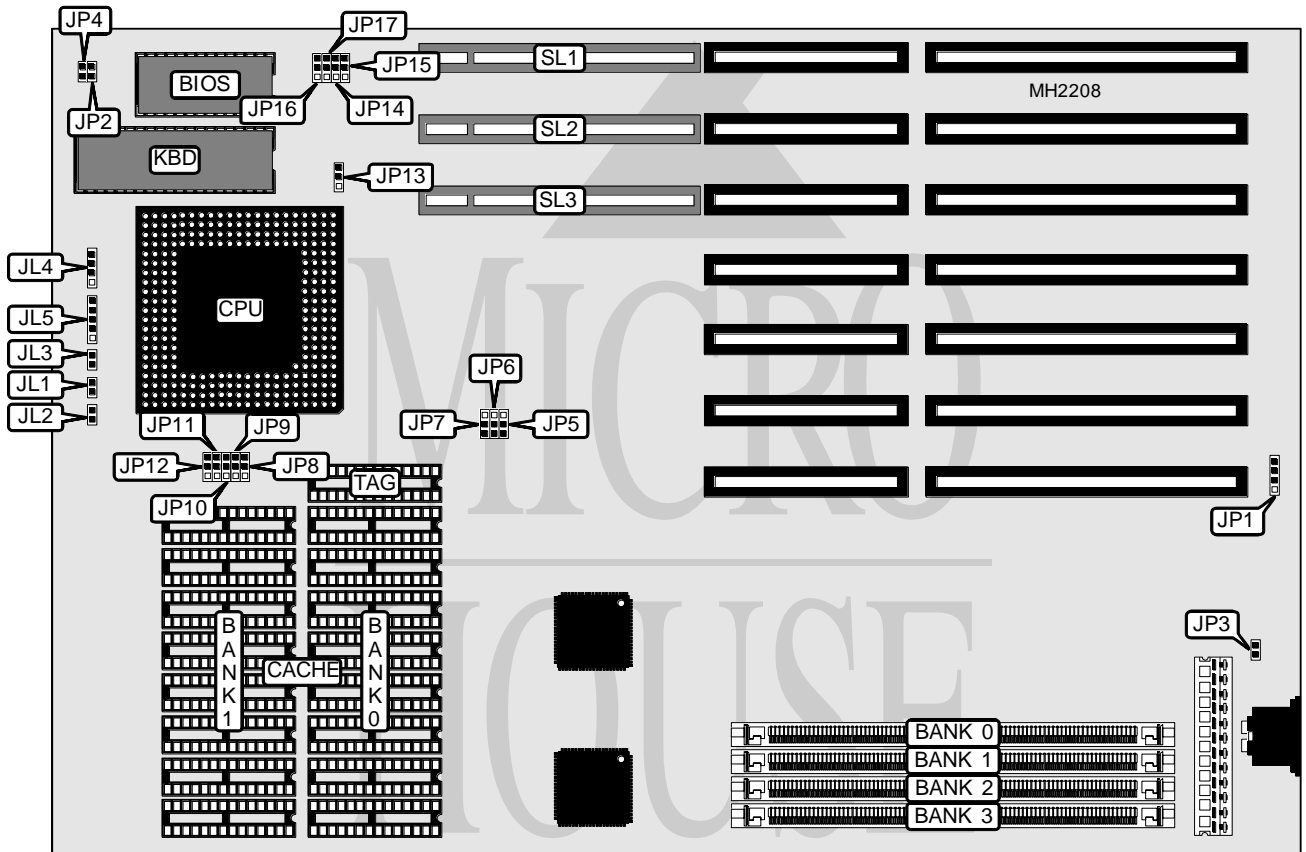


ROBOTECH, INC. COBRA RS P60

Processor	Pentium
Processor Speed	60/66MHz
Chip Set	Forex
Max. Onboard DRAM	128MB
Cache	256/512/1024/2048KB
BIOS	AMI
Dimensions	330mm x 218mm
I/O Options	32-bit VESA local bus slots (3), green PC connector
NPU Options	None



CONNECTIONS			
Purpose	Location	Purpose	Location
Turbo switch	JL1	Speaker	JL5
Reset switch	JL2	External battery	JP1
Turbo LED	JL3	Green PC connector	JP3
Power LED & keylock	JL4	32-bit VESA local bus slots	SL1 - SL3

Continued on next page. . .

ROBOTECH, INC.

COBRA RS P60

... continued from previous page

USER CONFIGURABLE SETTINGS		
Function	Jumper	Position
í Factory configured - do not alter	JP2	Open
í Factory configured - do not alter	JP16	pins 1 & 2 closed
í Factory configured - do not alter	JP17	pins 1 & 2 closed

DRAM CONFIGURATION				
Size	Bank 0	Bank 1	Bank 2	Bank 3
2MB	(1) 256K x 36	(1) 256K x 36	NONE	NONE
4MB	(1) 256K x 36	(1) 256K x 36	(1) 256K x 36	(1) 256K x 36
4MB	(1) 512K x 36	(1) 512K x 36	NONE	NONE
4MB	(1) 1M x 36	NONE	NONE	NONE
6MB	(1) 256K x 36	(1) 256K x 36	(1) 512K x 36	(1) 512K x 36
8MB	(1) 512K x 36	(1) 512K x 36	(1) 512K x 36	(1) 512K x 36
8MB	(1) 1M x 36	(1) 1M x 36	NONE	NONE
8MB	(1) 2M x 36	NONE	NONE	NONE
10MB	(1) 256K x 36	(1) 256K x 36	(1) 1M x 36	(1) 1M x 36
12MB	(1) 512K x 36	(1) 512K x 36	(1) 1M x 36	(1) 1M x 36
12MB	(1) 1M x 36	(1) 2M x 36	NONE	NONE
16MB	(1) 1M x 36	(1) 1M x 36	(1) 1M x 36	(1) 1M x 36
16MB	(1) 2M x 36	(1) 2M x 36	NONE	NONE
16MB	(1) 4M x 36	NONE	NONE	NONE
18MB	(1) 256K x 36	(1) 256K x 36	(1) 2M x 36	(1) 2M x 36
20MB	(1) 512K x 36	(1) 512K x 36	(1) 2M x 36	(1) 2M x 36
20MB	(1) 1M x 36	(1) 4M x 36	NONE	NONE
24MB	(1) 1M x 36	(1) 1M x 36	(1) 2M x 36	(1) 2M x 36
24MB	(1) 2M x 36	(1) 4M x 36	NONE	NONE
32MB	(1) 2M x 36	(1) 2M x 36	(1) 2M x 36	(1) 2M x 36
32MB	(1) 4M x 36	(1) 4M x 36	NONE	NONE
32MB	(1) 8M x 36	NONE	NONE	NONE
34MB	(1) 256K x 36	(1) 256K x 36	(1) 4M x 36	(1) 4M x 36
36MB	(1) 512K x 36	(1) 512K x 36	(1) 4M x 36	(1) 4M x 36
36MB	(1) 1M x 36	(1) 8M x 36	NONE	NONE
40MB	(1) 1M x 36	(1) 1M x 36	(1) 4M x 36	(1) 4M x 36
40MB	(1) 2M x 36	(1) 8M x 36	NONE	NONE
48MB	(1) 2M x 36	(1) 2M x 36	(1) 4M x 36	(1) 4M x 36
48MB	(1) 4M x 36	(1) 8M x 36	NONE	NONE
64MB	(1) 4M x 36	(1) 4M x 36	(1) 4M x 36	(1) 4M x 36
64MB	(1) 8M x 36	(1) 8M x 36	NONE	NONE
64MB	(1) 16M x 36	NONE	NONE	NONE
66MB	(1) 256K x 36	(1) 256K x 36	(1) 8M x 36	(1) 8M x 36
68MB	(1) 512K x 36	(1) 512K x 36	(1) 8M x 36	(1) 8M x 36
68MB	(1) 1M x 36	(1) 16M x 36	NONE	NONE
72MB	(1) 1M x 36	(1) 1M x 36	(1) 8M x 36	(1) 8M x 36
72MB	(1) 2M x 36	(1) 16M x 36	NONE	NONE
80MB	(1) 2M x 36	(1) 2M x 36	(1) 8M x 36	(1) 8M x 36

Continued on next page...

ROBOTECH, INC.

COBRA RS P60

... continued from previous page

DRAM CONFIGURATION (CON'T)				
Size	Bank 0	Bank 1	Bank 2	Bank 3
80MB	(1) 4M x 36	(1) 16M x 36	NONE	NONE
96MB	(1) 4M x 36	(1) 4M x 36	(1) 8M x 36	(1) 8M x 36
96MB	(1) 8M x 36	(1) 16M x 36	NONE	NONE
128MB	(1) 8M x 36	(1) 8M x 36	(1) 8M x 36	(1) 8M x 36
128MB	(1) 16M x 36	(1) 16M x 36	NONE	NONE

CACHE CONFIGURATION			
Size	Bank 0	Bank 1	TAG
256KB	(8) 32K x 8	NONE	(1) 32K x 8
512KB	(8) 32K x 8	(8) 32K x 8	(1) 32K x 8
1MB	(8) 128K x 8	NONE	(1) 32K x 8
2MB	(8) 128K x 8	(8) 128K x 8	(1) 128K x 8

CACHE JUMPER CONFIGURATION					
Size	JP8	JP9	JP10	JP11	JP12
256KB	1 & 2	1 & 2	1 & 2	Open	Open
512KB	1 & 2	2 & 3	2 & 3	Open	Open
1MB	1 & 2	2 & 3	1 & 2	2 & 3	1 & 2
2MB	1 & 2	2 & 3	2 & 3	2 & 3	2 & 3

Note: Pins designated should be in the closed position.

CPU SPEED CONFIGURATION			
Speed	JP5	JP6	JP7
60MHz	pins 1 & 2 closed	pins 2 & 3 closed	pins 1 & 2 closed
66MHz	pins 2 & 3 closed	pins 1 & 2 closed	pins 2 & 3 closed

BUS SPEED CONFIGURATION	
CPU speed	JP15
<=33MHz	pins 1 & 2 closed
>33MHz	pins 2 & 3 closed

VESA WAIT STATE CONFIGURATION	
Wait states	JP14
0 wait states	pins 1 & 2 closed
1 wait state	pins 2 & 3 closed

VESA SYNC/ASYNC CONFIGURATION		
Setting	JP4	JP13
SYNC (LCLK from chipset)	Closed	pins 1 & 2 closed
ASYNC (LCLK from OSC)	Open	pins 2 & 3 closed