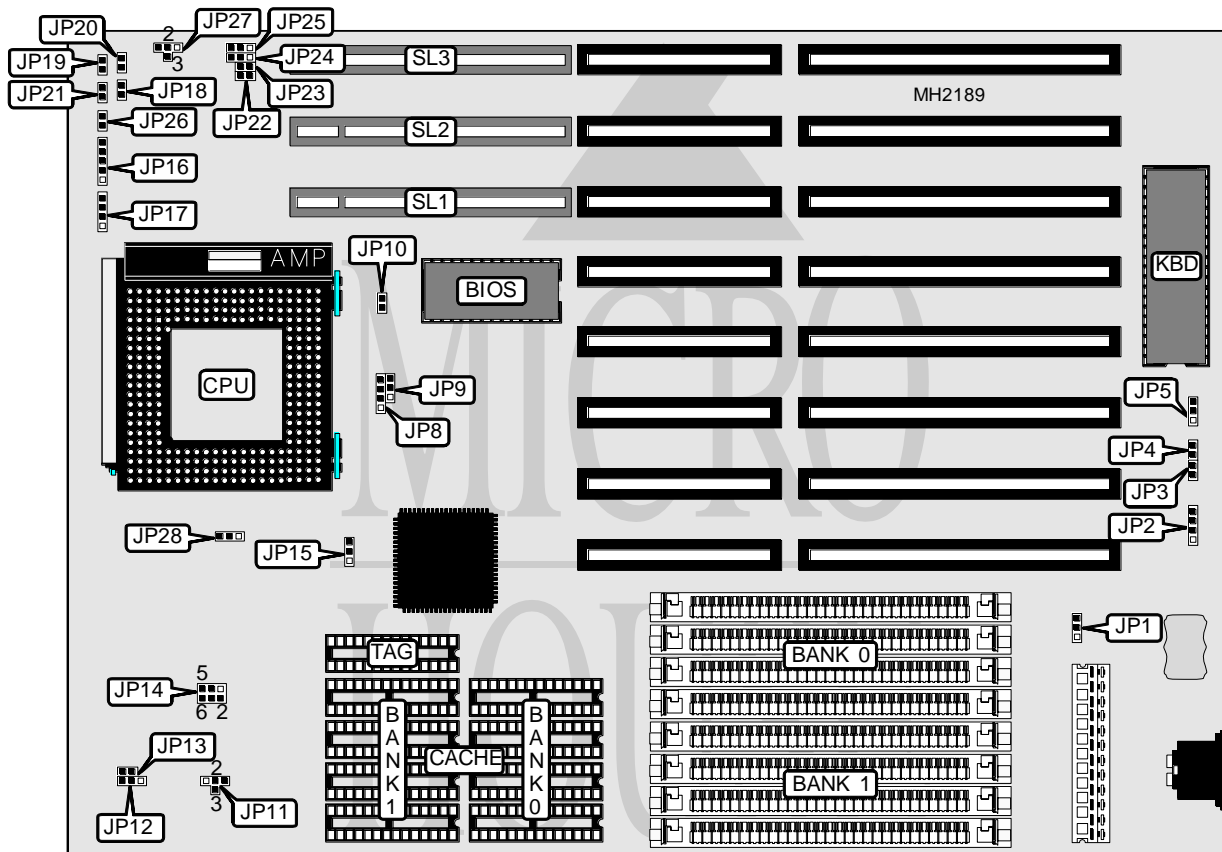


# ROBOTECH, INC. COBRA RS

<b>Processor</b>	80486SX/80487SX/80486DX/80486DX2/Pentium Overdrive
<b>Processor Speed</b>	25/33/40/50(internal)/50/66(internal)MHz
<b>Chip Set</b>	OPTI
<b>Max. Onboard DRAM</b>	128MB
<b>Cache</b>	256/512/1024KB
<b>BIOS</b>	AMI
<b>Dimensions</b>	330mm x 218mm
<b>I/O Options</b>	32-bit VESA local bus slots (3), green PC connector
<b>NPU Options</b>	None



CONNECTIONS			
Purpose	Location	Purpose	Location
External battery	JP2	Turbo switch	JP19
Green power supply	JP3	Green PC hardware switch	JP20
Keyboard connector	JP16	Turbo LED	JP21
Speaker	JP17	Reset switch	JP26
Green PC LED	JP18	32-bit VESA local bus slots	SL1 - SL3

Continued on next page. . .

# ROBOTECH, INC.

## COBRA RS

... continued from previous page

USER CONFIGURABLE SETTINGS		
Function	Jumper	Position
í CMOS memory normal operation	JP1	pins 1 & 2 closed
CMOS memory clear	JP1	pins 2 & 3 closed
í Monitor type select color	JP4	Closed
Monitor type select monochrome	JP4	Open
í Flash BIOS voltage select 5v	JP5	pins 1 & 2 closed
Flash BIOS voltage select 12v	JP5	pins 2 & 3 closed
í CPU type select Intel	JP15	pins 1 & 2 closed
CPU type select Cyrix	JP15	pins 2 & 3 closed
í Factory configured - do not alter	JP24	Open
í Factory configured - do not alter	JP25	Open

DRAM CONFIGURATION		
Size	Bank 0	Bank 1
1MB	(4) 256K x 9	NONE
2MB	(4) 256K x 9	(4) 256K x 9
4MB	(4) 1M x 9	NONE
8MB	(4) 1M x 9	(4) 1M x 9
16MB	(4) 4M x 9	NONE
20MB	(4) 1M x 9	(4) 4M x 9
32MB	(4) 4M x 9	(4) 4M x 9
64MB	(4) 8M x 9	(4) 8M x 9
128MB	(4) 16M x 9	(4) 16M x 9

CACHE CONFIGURATION			
Size	Bank 0	Bank 1	TAG
256KB	(4) 32K x 8	(4) 32K x 8	(1) 32K x 8
512KB	(4) 128K x 8	NONE	(1) 32K x 8
1MB	(4) 128K x 8	(4) 128K x 8	(1) 32K x 8

CACHE JUMPER CONFIGURATION		
Size	JP11	JP12
256KB	pins 1 & 2 closed	pins 1 & 2 closed
512KB	pins 2 & 3 closed	pins 2 & 3 closed
1MB	pins 2 & 4 closed	pins 2 & 3 closed

CPU TYPE CONFIGURATION			
Type	JP8	JP9	JP10
80486SX	pins 2 & 3 closed	Open	Open
80487SX	pins 1 & 2, 3 & 4 closed	Open	Open
80486DX/DX2	pins 1 & 2, 3 & 4 closed	pins 2 & 3 closed	Open
Pentium Overdrive	pins 1 & 2, 3 & 4 closed	pins 1 & 2 closed	Closed

Continued on next page. ...

# ROBOTECH, INC.

## COBRA RS

... continued from previous page

CPU SPEED CONFIGURATION				
Speed	JP13	JP14	JP27	JP28
25MHz	Closed	pins 1 & 2 closed	pins 2 & 4 closed	pins 2 & 3 closed
33MHz	Open	pins 1 & 2, 5 & 6 closed	pins 2 & 4 closed	pins 2 & 3 closed
40MHz	Open	pins 1 & 2, 3 & 4 closed	pins 1 & 2 closed	pins 1 & 2 closed
50MHz	Closed	pins 1 & 2 closed	pins 2 & 4 closed	pins 2 & 3 closed
50MHz	Open	pins 1 & 2, 3 & 4, 5 & 6 closed	pins 1 & 2 closed	pins 1 & 2 closed
66MHz	Open	pins 1 & 2, 5 & 6 closed	pins 2 & 4 closed	pins 2 & 3 closed

BUS SPEED CONFIGURATION	
CPU speed	JP22
<=33MHz	Open
>33MHz	Closed

VESA WAIT STATE CONFIGURATION	
Wait states	JP23
0 wait states	Open
1 wait state	Closed