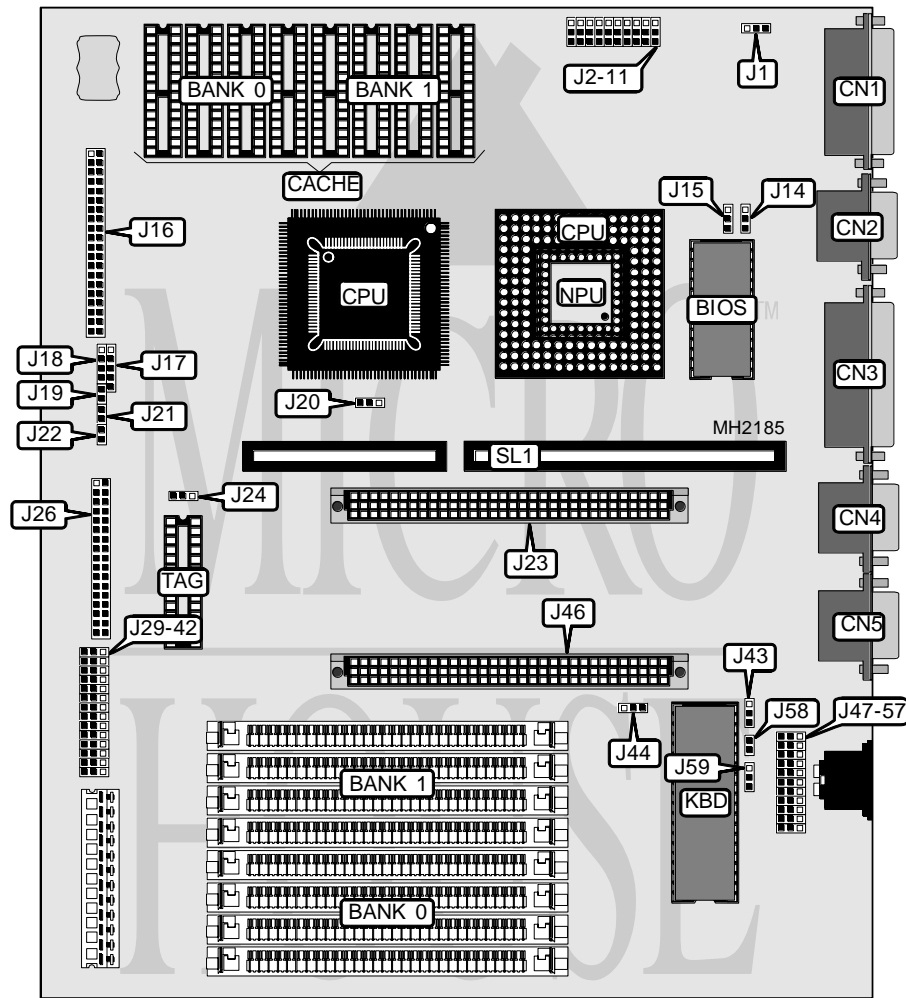


UNITRON COMPUTER, INC. 3486 SYSTEM TYPE 32

Processor	80386DX/CX486DLC/80486SX/80487SX/ODP486SX/80486DX/80486DX2
Processor Speed	20/25/33/40/50(internal)/50/66(internal)/80(internal)MHz
Chip Set	OPTI
Max. Onboard DRAM	32MB
Cache	32/64/128/256KB
BIOS	AMI
Dimensions	330mm x 218mm
I/O Options	Floppy drive interface, game port, IDE interface, parallel port, serial ports (2), VGA port
NPU Options	80387DX



Continued on next page. . .

UNITRON COMPUTER, INC.

3486 SYSTEM TYPE 32

... continued from previous page

CONNECTIONS			
Purpose	Location	Purpose	Location
Game port	CN1	Turbo LED	J19
VGA port	CN2	Turbo switch	J21
Parallel port	CN3	IDE interface LED	J22
Serial port 2	CN4	External video ports	J23 & J46
Serial port 1	CN5	Floppy drive interface	J26
IDE interface	J16	Reset switch	J58
Power LED & keylock	J17	Riser Card	SL1
Speaker	J18		

USER CONFIGURABLE SETTINGS		
Function	Jumper	Position
í Serial port 2 enabled	J3	pins 1 & 2 closed
Serial port 2 disabled	J3	pins 2 & 3 closed
í IDE interface enabled	J4	pins 1 & 2 closed
IDE interface disabled	J4	pins 2 & 3 closed
í Floppy drive interface enabled	J5	pins 1 & 2 closed
Floppy drive interface disabled	J5	pins 2 & 3 closed
í Parallel port select LPT1	J6	pins 1 & 2 closed
Parallel port select LPT2	J6	pins 2 & 3 closed
í Serial port 1 enabled	J8	pins 1 & 2 closed
Serial port 1 disabled	J8	pins 2 & 3 closed
í Game port enabled	J9	pins 1 & 2 closed
Game port disabled	J9	pins 2 & 3 closed
í Hard disk drive installed	J10	pins 1 & 2 closed
Hard disk drive not enabled	J10	pins 2 & 3 closed
í Parallel port enabled	J11	pins 1 & 2 closed
Parallel port disabled	J11	pins 2 & 3 closed
í NPU disabled	J20	pins 2 & 3 closed
NPU enabled	J20	pins 1 & 2 closed
í Floppy drive A/B LED select on J22 Floppy drive A	J29	pins 1 & 2 closed
Floppy drive A/B LED select on J22 Floppy drive B	J29	pins 2 & 3 closed
í Floppy/turbo LED select on J19 Floppy (System B or KPUA)	J30	pins 1 & 2 closed
Floppy/turbo LED select on J19 Turbo (System M or MSO)	J30	pins 2 & 3 closed
í Factory configured - do not alter	J31	Open
í Factory configured - do not alter	J32	Open
í Factory configured - do not alter	J33	Open
í Factory configured - do not alter	J34	Open
í Factory configured - do not alter	J43	Open
í Parity check disabled	J44	pins 1 & 2 closed
Parity check enabled	J44	pins 2 & 3 closed
í Monitor type select monochrome	J51	pins 1 & 2 closed
Monitor type select color	J51	pins 2 & 3 closed
í Factory configured - do not alter	J52	Open
í Factory configured - do not alter	J53	Open

Continued on next page. . .

UNITRON COMPUTER, INC.

3486 SYSTEM TYPE 32

... continued from previous page

USER CONFIGURABLE SETTINGS (CON'T)		
Function	Jumper	Position
í Factory configured - do not alter	J54	Open
í Factory configured - do not alter	J55	Open
í Factory configured - do not alter	J56	Open
í Factory configured - do not alter	J57	Open

Note: Hard drive & floppy drive jumper settings must match.

DRAM CONFIGURATION		
Size	Bank 0	Bank 1
1MB	(4) 256K x 9	NONE
2MB	(4) 256K x 9	(4) 256K x 9
4MB	(4) 1M x 9	NONE
5MB	(4) 256K x 9	(4) 1M x 9
8MB	(4) 1M x 9	(4) 1M x 9
16MB	(4) 4M x 9	NONE
20MB	(4) 1M x 9	(4) 4M x 9
32MB	(4) 4M x 9	(4) 4M x 9

CACHE CONFIGURATION			
Size	Bank 0	Bank 1	TAG
32KB	(4) 8K x 8	NONE	(1) 8K x 8
64KB	(4) 8K x 8	(4) 8K x 8	(1) 8K x 8
128KB	(4) 32K x 8	NONE	(1) 8K x 8
256KB	(4) 32K x 8	(4) 32K x 8	(1) 32K x 8

CACHE JUMPER CONFIGURATION								
Size	J35	J36	J37	J38	J39	J40	J41	J42
32KB	1 & 2	1 & 2	1 & 2	1 & 2	1 & 2	1 & 2	2 & 3	Open
64KB	2 & 3	1 & 2	1 & 2	2 & 3	1 & 2	1 & 2	1 & 2	Open
128KB	2 & 3	2 & 3	1 & 2	2 & 3	2 & 3	1 & 2	2 & 3	1 & 2
256KB	2 & 3	2 & 3	2 & 3	2 & 3	2 & 3	2 & 3	1 & 2	2 & 3

Note: Pins designated should be in the closed position.

CPU TYPE CONFIGURATION		
Type	J24	J59
80386	pins 1 & 2 closed	Open
80486DLC	pins 1 & 2 closed	Open
80486	pins 2 & 3 closed	Closed

CPU TYPE CONFIGURATION	
Type	J15
80486SX PQFP only	Open
80486SX PQFP & 80487SX	pins 1 & 2 closed
80486SX PQFP & 80486DX/DX2/ODP486SX	pins 2 & 3 closed

Continued on next page. . .

UNITRON COMPUTER, INC.

3486 SYSTEM TYPE 32

... continued from previous page

VESA CPU TYPE CONFIGURATION		
Type	J1	J14
80486SX	pins 2 & 3 closed	Open
80487SX	pins 1, 2 & 3 closed	pins 2 & 3 closed
ODP486SX	pins 1, 2 & 3 closed	pins 2 & 3 closed
80486DX/DX2	pins 1, 2 & 3 closed	pins 1 & 2 closed

CPU SPEED CONFIGURATION (ICS2494-244 CLOCK)				
Speed	J47	J48	J49	J50
20MHz	pins 1 & 2 closed	pins 1 & 2 closed	pins 1 & 2 closed	pins 1 & 2 closed
25MHz	pins 2 & 3 closed	pins 2 & 3 closed	pins 1 & 2 closed	pins 1 & 2 closed
32MHz	pins 1 & 2 closed	pins 1 & 2 closed	pins 1 & 2 closed	pins 2 & 3 closed
33MHz	pins 2 & 3 closed	pins 2 & 3 closed	pins 2 & 3 closed	pins 1 & 2 closed
40MHz	pins 1 & 2 closed	pins 1 & 2 closed	pins 2 & 3 closed	pins 2 & 3 closed
50MHz	pins 2 & 3 closed	pins 1 & 2 closed	pins 1 & 2 closed	pins 1 & 2 closed
66MHz	pins 2 & 3 closed	pins 1 & 2 closed	pins 2 & 3 closed	pins 1 & 2 closed
80MHz	pins 2 & 3 closed	pins 1 & 2 closed	pins 1 & 2 closed	pins 2 & 3 closed

CPU SPEED CONFIGURATION (IMS425 CLOCK)				
Speed	J47	J48	J49	J50
20MHz	pins 1 & 2 closed	pins 2 & 3 closed	pins 1 & 2 closed	pins 2 & 3 closed
25MHz	pins 1 & 2 closed	pins 2 & 3 closed	pins 2 & 3 closed	pins 2 & 3 closed
32MHz	pins 1 & 2 closed	pins 1 & 2 closed	pins 2 & 3 closed	pins 1 & 2 closed
33MHz	pins 2 & 3 closed	pins 2 & 3 closed	pins 1 & 2 closed	pins 2 & 3 closed
40MHz	pins 2 & 3 closed	pins 2 & 3 closed	pins 1 & 2 closed	pins 1 & 2 closed
50MHz	pins 2 & 3 closed	pins 2 & 3 closed	pins 2 & 3 closed	pins 1 & 2 closed
66MHz	pins 2 & 3 closed	pins 1 & 2 closed	pins 2 & 3 closed	pins 1 & 2 closed
80MHz	pins 2 & 3 closed	pins 1 & 2 closed	pins 1 & 2 closed	pins 1 & 2 closed

SERIAL PORT 1 CONFIGURATION	
Port 1	J7
COM1	pins 1 & 2 closed
COM3	pins 2 & 3 closed

SERIAL PORT 2 CONFIGURATION	
Port 2	J2
COM2	pins 1 & 2 closed
COM4	pins 2 & 3 closed