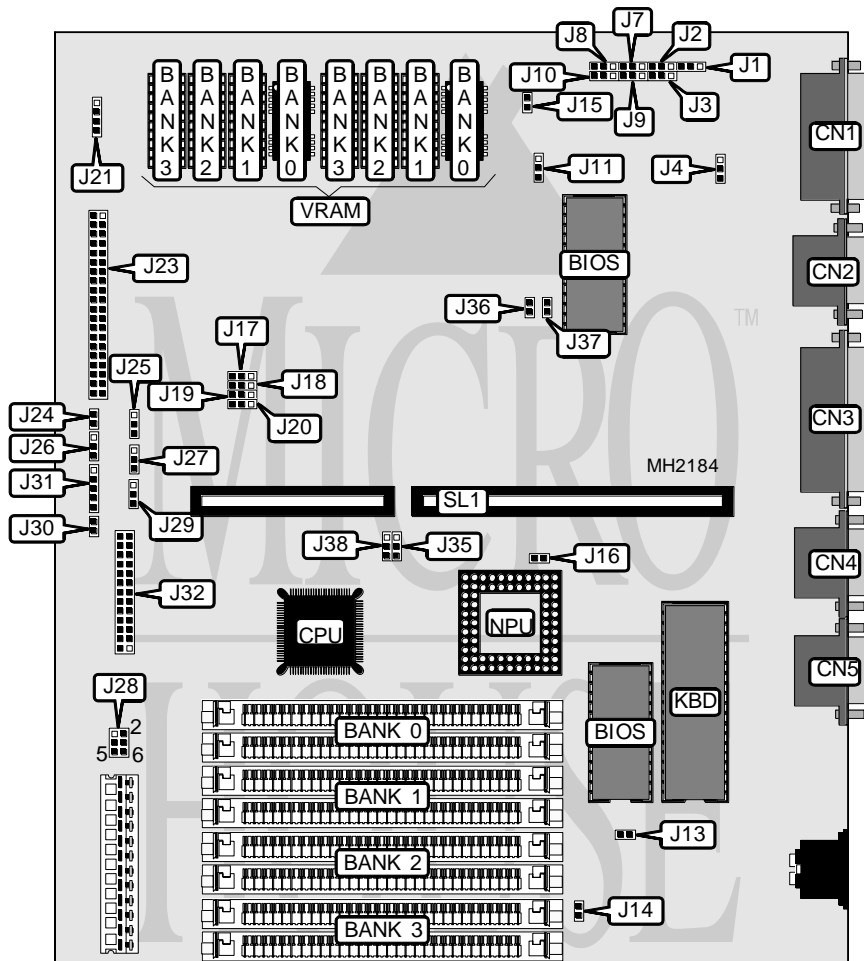


UNITRON COMPUTER, INC. 3486 SYSTEM TYPE 16

Processor	80386SX/CX486SLC
Processor Speed	16/20/25/33MHz
Chip Set	OPTI
Max. Onboard DRAM	16MB
Cache	None
BIOS	Phoenix
Dimensions	254mm x 218mm
I/O Options	Floppy drive interface, game port, IDE interface, parallel port, serial ports (2), VGA port
NPU Options	80387SX



Continued on next page . . .

UNITRON COMPUTER, INC.

3486 SYSTEM TYPE 16

... continued from previous page

CONNECTIONS			
Purpose	Location	Purpose	Location
Game port	CN1	IDE interface	J23
VGA port	CN2	IDE interface LED	J24
Parallel port	CN3	Turbo LED	J26
Serial port 2	CN4	Turbo LED	J30
Serial port 1	CN5	Power LED & keylock	J31
Chassis fan power	J13	Floppy drive interface	J32
Reset switch	J14	Riser Card	SL1
Speaker	J21		

USER CONFIGURABLE SETTINGS		
Function	Jumper	Position
í Hard drive installed	J1	pins 2 & 3 closed
Hard drive not installed	J1	pins 1 & 2 closed
í Serial port B enabled	J3	pins 1 & 2 closed
Serial port B disabled	J3	pins 2 & 3 closed
í Game port enabled	J4	pins 1 & 2 closed
Game port disabled	J4	pins 2 & 3 closed
í Parallel port enabled	J7	pins 1 & 2 closed
Parallel port disabled	J7	pins 2 & 3 closed
í Serial port A enabled	J8	pins 1 & 2 closed
Serial port A disabled	J8	pins 2 & 3 closed
í Parallel port select LPT1	J9	pins 1 & 2 closed
Parallel port select LPT2	J9	pins 2 & 3 closed
í Monitor type select color	J11	pins 1 & 2 closed
Monitor type select monochrome	J11	pins 2 & 3 closed
í Display type select non interlaced	J15	Open
Display type select intrlaced	J15	Closed
í NPU synchronous with CPU	J16	Open
NPU asynchronous with CPU	J16	Closed
í Floppy drive interface enabled	J25	pins 1 & 2 closed
Floppy drive interface disabled	J25	pins 2 & 3 closed
í IDE interface enabled	J27	pins 1 & 2 closed
IDE interface disabled	J27	pins 2 & 3 closed
í Turbo LED enabled on J26 (System M)	J29	pins 1 & 2 closed
Floppy drive LED enabled on J26 (System B; open J30)	J29	pins 2 & 3 closed

DRAM CONFIGURATION				
Size	Bank 0	Bank 1	Bank 2	Bank 3
512KB	(2) 256K x 9	NONE	NONE	NONE
1MB	(2) 256K x 9	(2) 256K x 9	NONE	NONE
2MB	(2) 256K x 9	(2) 256K x 9	(2) 256K x 9	(2) 256K x 9
2MB	(2) 1M x 9	NONE	NONE	NONE
3MB	(2) 256K x 9	(2) 1M x 9	(2) 256K x 9	NONE
4MB	(2) 1M x 9	(2) 1M x 9	NONE	NONE

Continued on next page. . .

UNITRON COMPUTER, INC.

3486 SYSTEM TYPE 16

... continued from previous page

DRAM CONFIGURATION (CON'T)				
Size	Bank 0	Bank 1	Bank 2	Bank 3
5MB	(2) 256K x 9	(2) 1M x 9	(2) 256K x 9	(2) 1M x 9
6MB	(2) 1M x 9	(2) 1M x 9	(2) 1M x 9	NONE
8MB	(2) 1M x 9	(2) 1M x 9	(2) 1M x 9	(2) 1M x 9
8MB	(2) 4M x 9	NONE	NONE	NONE
12MB	(2) 1M x 9	(2) 4M x 9	(2) 1M x 9	NONE
16MB	(2) 4M x 9	(2) 4M x 9	NONE	NONE

CPU TYPE CONFIGURATION	
Type	J28
80386SX	Open
80486SLC	pins 1 & 2, 3 & 4, 5 & 6 closed

CPU SPEED CONFIGURATION		
Speed	J35	J38
16MHz	pins 1 & 2 closed	pins 1 & 2 closed
20MHz	pins 1 & 2 closed	pins 2 & 3 closed
25MHz	pins 2 & 3 closed	pins 1 & 2 closed
33MHz	pins 2 & 3 closed	pins 2 & 3 closed

FLOPPY DRIVE CONFIGURATION				
Type	J17	J18	J19	J20
System B	pins 1 & 2 closed	pins 1 & 2 closed	pins 1 & 2 closed	pins 1 & 2 closed
System M	pins 2 & 3 closed	pins 2 & 3 closed	pins 2 & 3 closed	pins 2 & 3 closed

Note: System B- drive B has twisted cable; drive A has straight cable. System M- drive B has straight cable; drive A has twisted cable

SERIAL PORT CONFIGURATION	
Port 1	J10
COM1	pins 1 & 2 closed
COM3	pins 2 & 3 closed

SERIAL PORT CONFIGURATION	
Port 2	J2
COM2	pins 1 & 2 closed
COM4	pins 2 & 3 closed

VRAM CONFIGURATION				
Size	Bank 0	Bank 1	Bank 2	Bank 3
256KB	(2) 44256	NONE	NONE	NONE
512KB	(2) 44256	(2) 44256	NONE	NONE
1MB	(2) 44256	(2) 44256	(2) 44256	(2) 44256

ON BOARD VGA CONFIGURATION		
Setting	J36	J37
Enabled	Closed	Closed

Disabled	Open	Open
----------	------	------