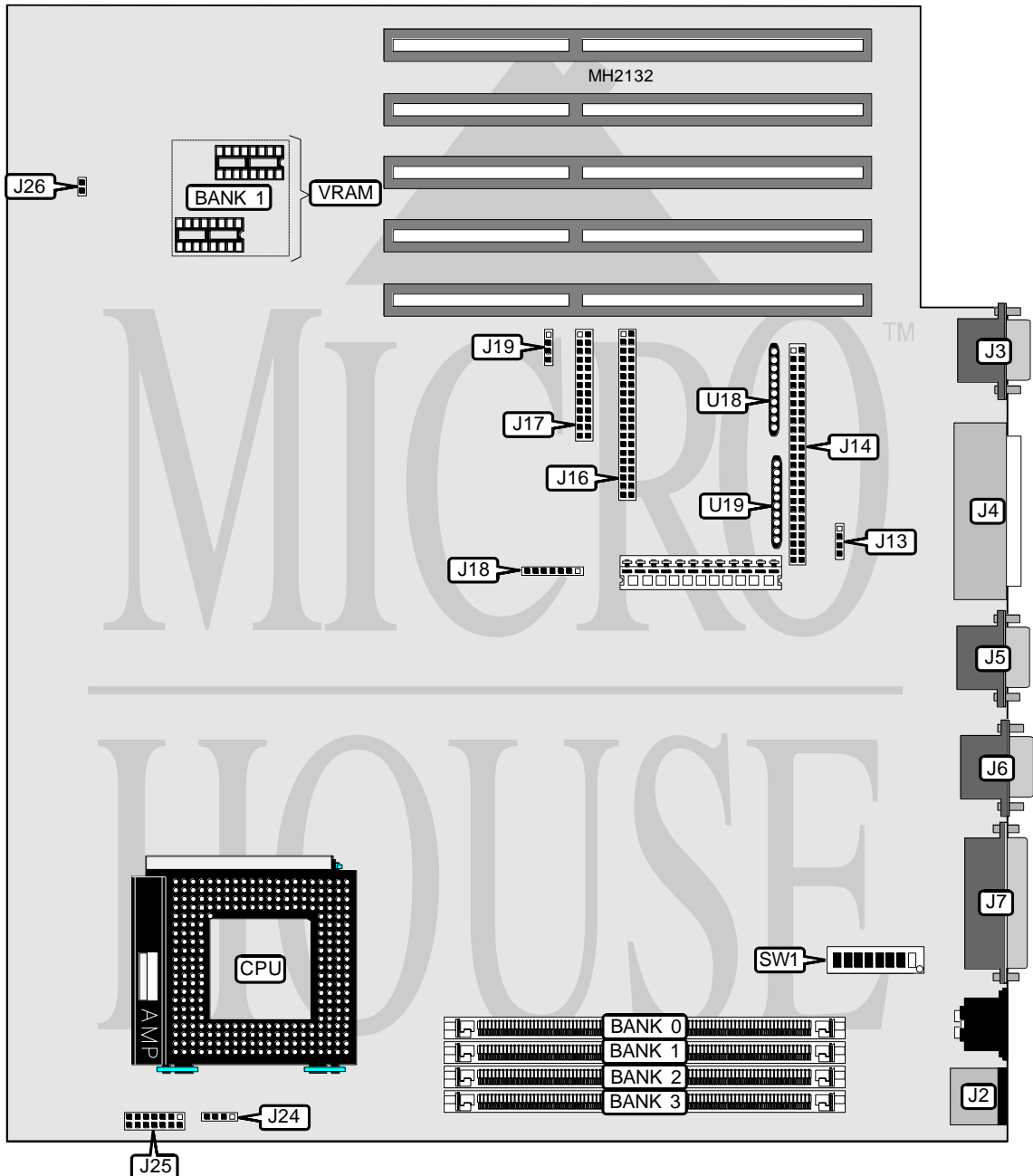


HEWLETT-PACKARD COMPANY HP NETSERVER LE

Processor	80487SX/80486DX/ODP486SX/80486DX2/Pentium Overdrive
Processor Speed	33/66(internal)MHz
Chip Set	Hewlett Packard
Max. Onboard DRAM	128MB
Cache	None
BIOS	Phoenix
Dimensions	330mm x 218mm
I/O Options	Floppy drive interface, IDE interface, parallel port, SCSI interface, SCSI port, serial ports (2), PS/2 mouse port, VGA port
NPU Options	None



Continued on next page. . .

HEWLETT-PACKARD COMPANY

HP NETSERVER LE

... continued from previous page

CONNECTIONS			
Purpose	Location	Purpose	Location
PS/2 mouse port	J2	Floppy drive interface	J16
VGA port	J3	IDE interface	J17
SCSI connector (external)	J4	IDE interface LED	J19
Serial port 1	J5	Chassis fan power	J24
Serial port 2	J6	Control panel connector	J25
Parallel port	J7	Speaker	J26
External battery	J13	SCSI terminators	U18 & U19
SCSI connector (internal)	J14		

Note: J24 may not be present.

USER CONFIGURABLE SETTINGS		
Function	Jumper/Switch	Position
í Factory configured - do not alter	J18	pins 1 & 2 closed
í Flash BIOS write protect enabled	SW1/1	Off
Flash BIOS write protect disabled	SW1/1	On
í On board video disabled	SW1/2	On
On board video enabled	SW1/2	Off
í Password enabled	SW1/3	Off
Password disabled	SW1/3	On
í CMOS memory normal operation	SW1/4	Off
CMOS memory clear	SW1/4	On
í BIOS write protect enabled	SW1/5	On
BIOS write protect disabled	SW1/5	Off
í Factory configured - do not alter	SW1/8	On

DRAM CONFIGURATION				
Size	Bank 0	Bank 1	Bank 2	Bank 3
4MB	(1) 1M x 36	NONE	NONE	NONE
8MB	(1) 1M x 36	(1) 1M x 36	NONE	NONE
8MB	(1) 2M x 36	NONE	NONE	NONE
12MB	(1) 1M x 36	(1) 1M x 36	(1) 1M x 36	NONE
12MB	(1) 2M x 36	(1) 1M x 36	NONE	NONE
16MB	(1) 2M x 36	(1) 1M x 36	(1) 1M x 36	NONE
16MB	(1) 1M x 36	(1) 1M x 36	(1) 1M x 36	(1) 1M x 36
16MB	(1) 2M x 36	(1) 2M x 36	NONE	NONE
16MB	(1) 4M x 36	NONE	NONE	NONE
20MB	(1) 4M x 36	(1) 1M x 36	NONE	NONE
20MB	(1) 2M x 36	(1) 1M x 36	(1) 1M x 36	(1) 1M x 36
24MB	(1) 4M x 36	(1) 1M x 36	(1) 1M x 36	NONE
24MB	(1) 2M x 36	(1) 2M x 36	(1) 2M x 36	NONE
24MB	(1) 4M x 36	(1) 2M x 36	NONE	NONE
28MB	(1) 4M x 36	(1) 1M x 36	(1) 1M x 36	(1) 1M x 36
32MB	(1) 2M x 36	(1) 2M x 36	(1) 2M x 36	(1) 2M x 36
32MB	(1) 4M x 36	(1) 2M x 36	(1) 2M x 36	NONE

Continued on next page. . .

HEWLETT-PACKARD COMPANY

HP NETSERVER LE

... continued from previous page

DRAM CONFIGURATION (CON'T)				
Size	Bank 0	Bank 1	Bank 2	Bank 3
32MB	(1) 4M x 36	(1) 4M x 36	NONE	NONE
32MB	(1) 8M x 36	NONE	NONE	NONE
36MB	(1) 8M x 36	(1) 1M x 36	NONE	NONE
40MB	(1) 4M x 36	(1) 2M x 36	(1) 2M x 36	(1) 2M x 36
40MB	(1) 8M x 36	(1) 1M x 36	(1) 1M x 36	NONE
40MB	(1) 8M x 36	(1) 2M x 36	NONE	NONE
44MB	(1) 8M x 36	(1) 1M x 36	(1) 1M x 36	(1) 1M x 36
48MB	(1) 4M x 36	(1) 4M x 36	(1) 4M x 36	NONE
48MB	(1) 8M x 36	(1) 2M x 36	(1) 2M x 36	NONE
48MB	(1) 8M x 36	(1) 4M x 36	NONE	NONE
56MB	(1) 8M x 36	(1) 2M x 36	(1) 2M x 36	(1) 2M x 36
64MB	(1) 8M x 36	(1) 4M x 36	(1) 4M x 36	NONE
64MB	(1) 4M x 36	(1) 4M x 36	(1) 4M x 36	(1) 4M x 36
64MB	(1) 8M x 36	(1) 8M x 36	NONE	NONE
80MB	(1) 8M x 36	(1) 4M x 36	(1) 4M x 36	(1) 4M x 36
96MB	(1) 8M x 36	(1) 8M x 36	(1) 8M x 36	NONE
128MB	(1) 8M x 36	(1) 8M x 36	(1) 8M x 36	(1) 8M x 36

CPU TYPE CONFIGURATION		
Type	SW1/6	SW1/7
80487SX	Off	On
80486DX	On	Off

VIDEO MEMORY CONFIGURATION		
Size	Bank 0	Bank 1
256KB	(2) 256 x 4	NONE
512KB	(2) 256 x 4	(2) 256 x 4

Note: The location of Bank 0 is unidentified.