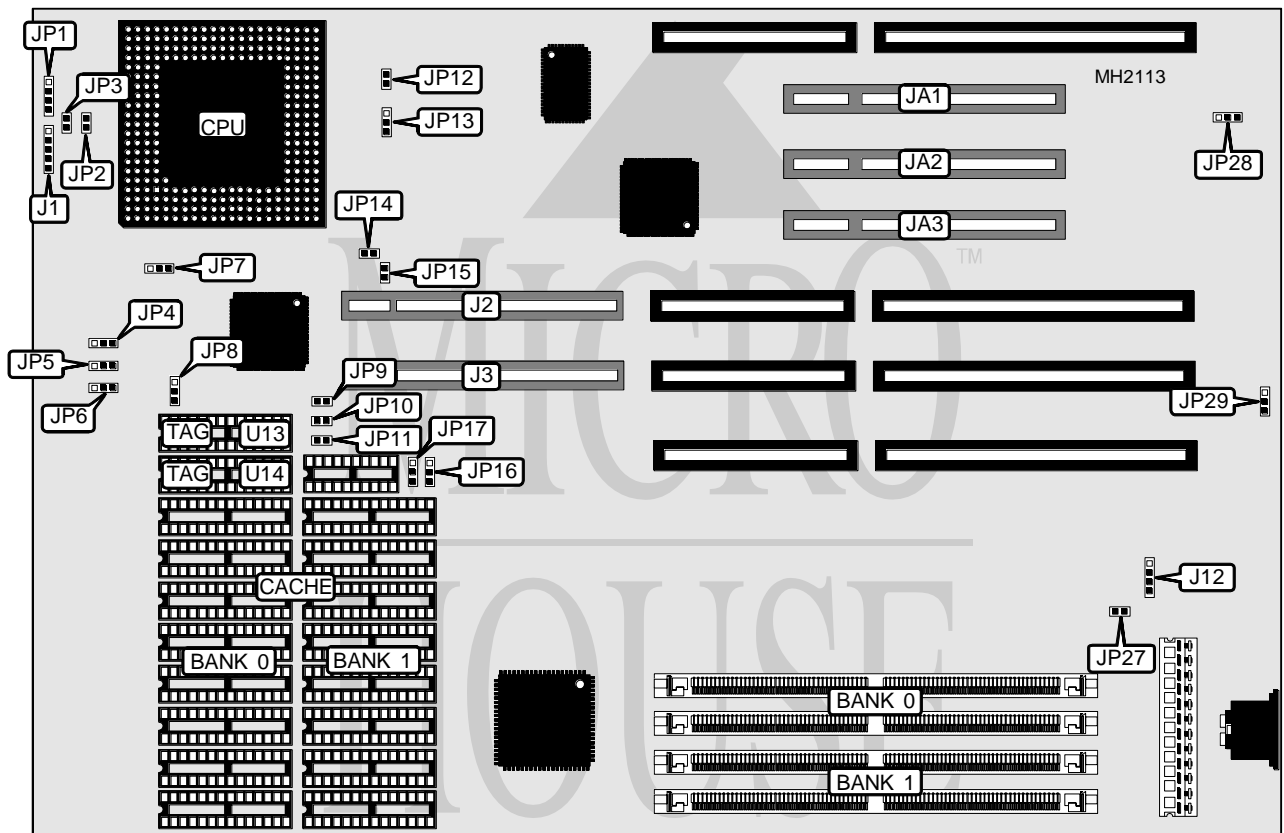


# OCEAN INFORMATION SYSTEMS, INC.

## BISON III REV. 1.0

<b>Processor</b>	Pentium
<b>Processor Speed</b>	60/66MHz
<b>Chip Set</b>	OPTI
<b>Max. Onboard DRAM</b>	128MB
<b>Cache</b>	64/128/256/512KB
<b>BIOS</b>	AMI
<b>Dimensions</b>	330mm x 218mm
<b>I/O Options</b>	32-bit PCI bus slots (3), 2-bit VESA local bus slots (2)
<b>NPU Options</b>	None



CONNECTIONS			
Purpose	Location	Purpose	Location
Power LED & keylock	J1	Speaker	JP1
32-bit VESA Local bus slots	J2, J3	Turbo switch	JP2
External battery	J12	Reset switch	JP3
32-bit PCI bus slots	JA1, JA2, JA3	Cooling fan connector	JP12

Continued on next page...

# OCEAN INFORMATION SYSTEMS, INC.

## BISON III REV. 1.0

... continued from previous page.

USER CONFIGURABLE SETTINGS		
Function	Jumper	Position
CPU clock speed select 60MHz	JP4	pins 1 & 2 closed
CPU clock speed select 66MHz	JP4	pins 2 & 3 closed
í Factory configured - do not alter	JP5	N/A
í Factory configured - do not alter	JP6	N/A
í Factory configured - do not alter	JP8	N/A
í Cooling fan power select 12Vdc	JP13	pins 1 & 2 closed
Cooling fan power select +5Vdc	JP13	pins 2 & 3 closed
í Factory configured - do not alter	JP14	N/A
í Monitor type select CGA, EGA, VGA	JP27	Closed
Monitor type select monochrome	JP27	Open
í CMOS normal operation	JP28	pins 2 & 3 closed
CMOS memory reset	JP28	pins 1 & 2 closed
í Power-good signal from power supply	JP29	pins 1 & 2 closed
On board power-good signal	JP29	pins 2 & 3 closed

DRAM CONFIGURATION		
Size	Bank 0	Bank 1
2MB	(2) 256K x 32	NONE
4MB	(2) 256K x 32	(2) 256K x 32
4MB	(2) 512K x 32	NONE
6MB	(2) 256K x 32	(2) 512K x 32
8MB	(2) 512K x 32	(2) 512K x 32
8MB	(2) 1M x 32	NONE
10MB	(2) 256K x 32	(2) 1M x 32
12MB	(2) 512K x 32	(2) 1M x 32
16MB	(2) 1M x 32	(2) 1M x 32
16MB	(2) 2M x 32	NONE
18MB	(2) 256K x 32	(2) 2M x 32
20MB	(2) 512K x 32	(2) 2M x 32
24MB	(2) 1M x 32	(2) 2M x 32
32MB	(2) 2M x 32	(2) 2M x 32
32MB	(2) 2M x 32	(2) 2M x 32
32MB	(2) 4M x 32	NONE
34MB	(2) 256K x 32	(2) 4M x 32
36MB	(2) 512K x 32	(2) 4M x 32
40MB	(2) 1M x 32	(2) 4M x 32
48MB	(2) 2M x 32	(2) 4M x 32
48MB	(2) 2M x 32	(2) 4M x 32
64MB	(2) 4M x 32	(2) 4M x 32
64MB	(2) 8M x 32	NONE
66MB	(2) 256K x 32	(2) 8M x 32
68MB	(2) 512K x 32	(2) 8M x 32
72MB	(2) 1M x 32	(2) 8M x 32
80MB	(2) 2M x 32	(2) 8M x 32
80MB	(2) 2M x 32	(2) 8M x 32
96MB	(2) 4M x 32	(2) 8M x 32

---

128MB	(2) 8M x 32	(2) 8M x 32
-------	-------------	-------------

OCEAN INFORMATION SYSTEMS, INC.  
 BISON III REV. 1.0

... continued from previous page.

CACHE CONFIGURATION				
Size	Bank 0	Bank 1	U13	U14
64KB	(8) 8K x 8	NONE	NONE	(1) 8K x 8
128KB	(8) 8K x 8	(8) 8K x 8	NONE	(1) 8K x 8
256KB	(8) 32K x 8	NONE	NONE	(1) 8K x 8
512KB	(8) 32K x 8	(8) 32K x 8	(1) 8K x 8	(1) 8K x 8

CACHE JUMPER CONFIGURATION			
Size	JP7	JP9	JP10
64KB	pins 1 & 2 closed	Open	Open
128KB	pins 2 & 3 closed	Closed	Open
256KB	pins 1 & 2 closed	Closed	Closed
512KB	pins 2 & 3 closed	Closed	Closed

CACHE JUMPER CONFIGURATION (continued)			
Size	JP11	JP16	JP17
64KB	Open	pins 1 & 2 closed	pins 1 & 2 closed
128KB	Open	pins 2 & 3 closed	pins 2 & 3 closed
256KB	Open	pins 1 & 2 closed	pins 1 & 2 closed
512KB	Closed	pins 2 & 3 closed	pins 2 & 3 closed

VESA WAIT STATE CONFIGURATION	
Wait states	JP15
1 wait state	Closed
0 wait states	Open

**MISCELLANEOUS TECHNICAL NOTE**

Note: The Bison III is shipped with 512KB of cache memory to insure optimum pentium efficiency.