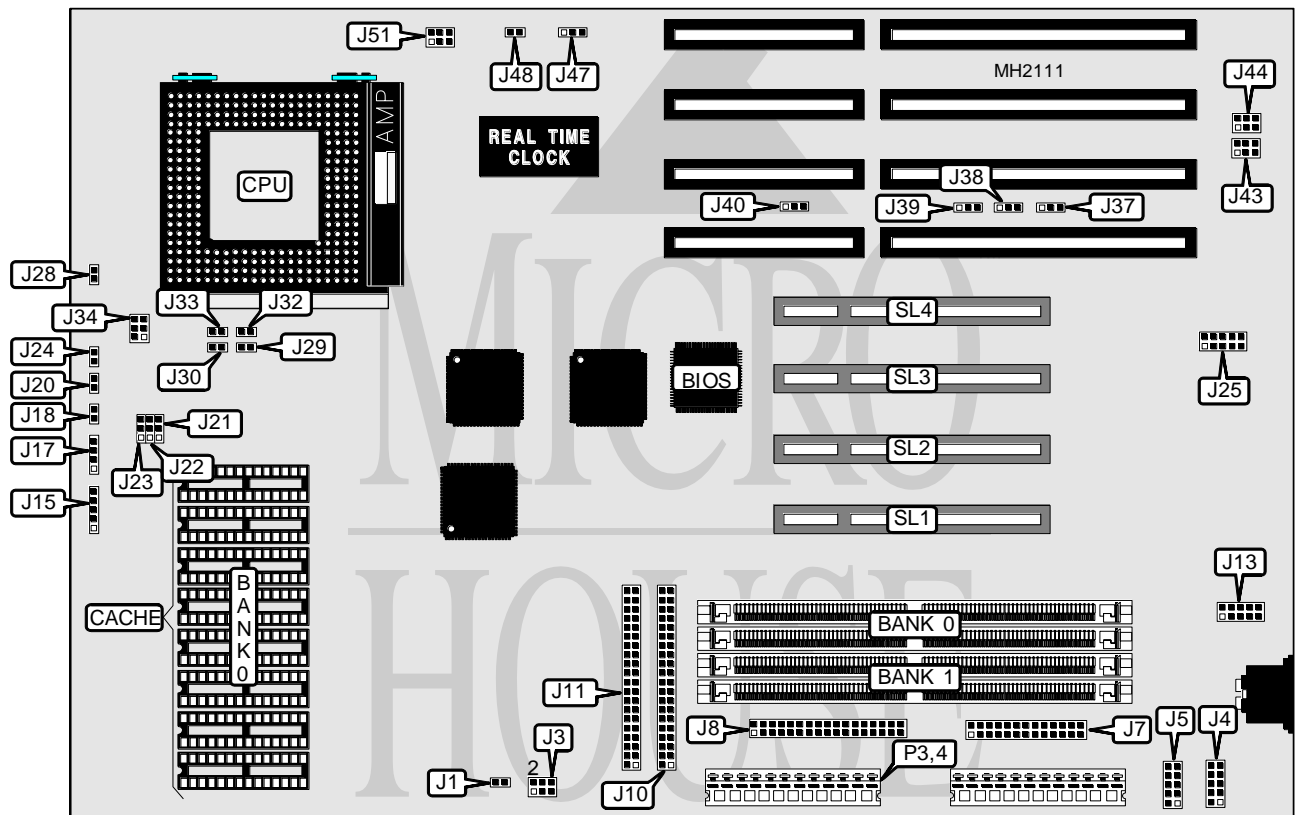


AMERICAN MEGATRENDS, INC. ATLAS PCI PENTIUM ISA

Processor	Pentium
Processor Speed	90/100MHz
Chip Set	American Megatrends
Max. Onboard DRAM	128MB
Cache	256/512KB
BIOS	AMI
Dimensions	330mm x 218mm
I/O Options	32-bit PCI bus slots (4), floppy drive interface, IDE interface (2), green PC feature, parallel port, PS/2 mouse port, serial ports (2), green PC monitor connector
NPU Options	None



CONNECTIONS			
Purpose	Location	Purpose	Location
Green PC power connector	J1	Power LED & keylock	J15
Serial port 1	J4	Speaker	J17
Serial port 2	J5	Reset switch	J18
Parallel port	J7	Turbo switch	J20
Floppy drive interface	J8	Turbo LED	J24
IDE interface (secondary)	J10	Green PC monitor connector	J25
IDE interface (primary)	J11	IDE interface IDE	J28
PS/2 mouse port	J13	32-bit PCI bus slots	SL1 - SL4

Continued on next page...

AMERICAN MEGATRENDS, INC.
ATLAS PCI PENTIUM ISA

... continued from previous page

USER CONFIGURABLE SETTINGS		
Function	Jumper	Position
í Cache memory type select write back	J29	Open
Cache memory type select write through	J29	Closed
í Parallel port IRQ select IRQ7	J37	pins 1 & 2 closed
Parallel port IRQ select IRQ5	J37	pins 2 & 3 closed
í Serial port 2 IRQ select IRQ3	J38	pins 1 & 2 closed
Serial port 2 IRQ select IRQ4	J38	pins 2 & 3 closed
í Serial port 1 IRQ select IRQ4	J39	pins 1 & 2 closed
Serial port 1 IRQ select IRQ3	J39	pins 2 & 3 closed
í Onboard mouse IRQ12 enabled	J40	pins 1 & 2 closed
Bus mouse IRQ12 enabled	J40	pins 2 & 3 closed
í Factory configured - do not alter	J47	Open
í CMOS memory normal operation	J48	Open
CMOS memory clear	J48	Closed
í Factory configured - do not alter	J51	Open

DRAM CONFIGURATION		
Size	Bank 0	Bank 1
2MB	(2) 256K x 36	NONE
4MB	(2) 256K x 36	(2) 256K x 36
4MB	(2) 512K x 36	NONE
8MB	(2) 512K x 36	(2) 512K x 36
8MB	(2) 1M x 36	NONE
16MB	(2) 1M x 36	(2) 1M x 36
16MB	(2) 2M x 36	NONE
20MB	(2) 512K x 36	(2) 2M x 36
32MB	(2) 2M x 36	(2) 2M x 36
32MB	(2) 4M x 36	NONE
36MB	(2) 512K x 36	(2) 4M x 36
40MB	(2) 1M x 36	(2) 4M x 36
48MB	(2) 2M x 36	(2) 4M x 36
64MB	(2) 4M x 36	(2) 4M x 36
64MB	(2) 8M x 36	NONE
80MB	(2) 2M x 36	(2) 8M x 36
128MB	(2) 8M x 36	(2) 8M x 36
128MB	(2) 16M x 36	NONE

CACHE CONFIGURATION	
Size	Bank 0
256KB	(8) 32K x 8
512KB	(8) 64K x 8

Continued on next page...

AMERICAN MEGATRENDS, INC.

ATLAS PCI PENTIUM ISA

... continued from previous page

CACHE JUMPER CONFIGURATION			
Size	J21	J22	J23
256KB	pins 1 & 2 closed	pins 1 & 2 closed	pins 1 & 2 closed
512KB	pins 2 & 3 closed	pins 2 & 3 closed	pins 2 & 3 closed

CPU OUTPUT SIGNAL BUFFER CONFIGURATION		
Output signal buffer	J30	J32
Normal system	Open	Open
Loaded system	Closed	Open
Extra loaded system	Closed	Closed

CPU SPEED CONFIGURATION	
Speed	JP33
60/66/90i/100iMHz	Closed
50/100iMHz	Open

3.3 VOLT POWER SOURCE CONFIGURATION (INTERNAL)		
J3	J34	P3 & P4
Open	pins 1 & 2, 3 & 4, 5 & 6 closed	Open

3.3 VOLT POWER SOURCE CONFIGURATION (EXTERNAL)		
J3	J34	P3 & P4
pins 1 & 2, 3 & 4, 5 & 6 closed	Open	Closed

PARALLEL PORT DMA CONFIGURATION		
DMA channel	J43	J44
None	Open	Open
DRQ0	pins 1 & 2 closed	pins 1 & 2 closed
DRQ1	pins 3 & 4 closed	pins 3 & 4 closed
DRQ3	pins 5 & 6 closed	pins 5 & 6 closed