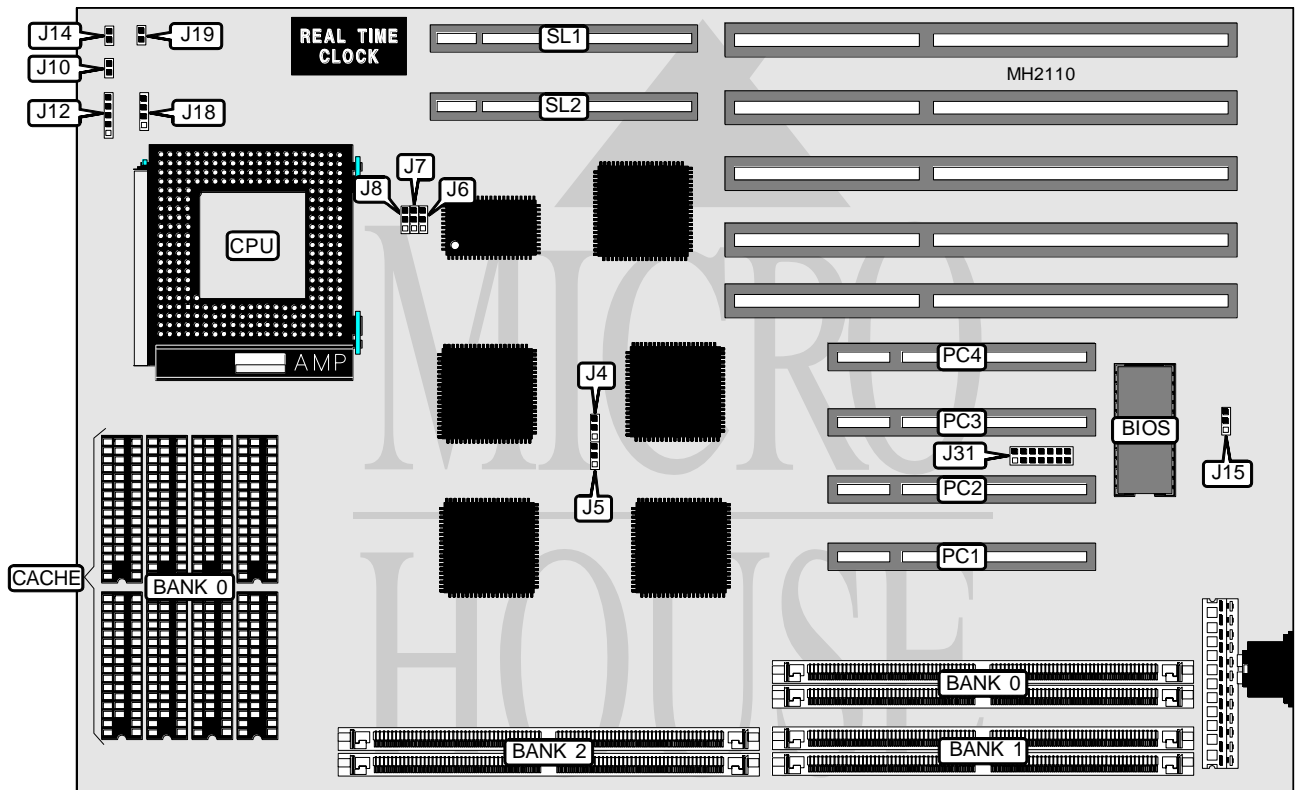


TYAN COMPUTER CORPORATION

S1452 REV. 1.0

Processor	Pentium
Processor Speed	90/100MHz
Chip Set	Intel
Max. Onboard DRAM	192MB
Cache	256/512KB
BIOS	Award
Dimensions	330mm x 218mm
I/O Options	32-bit PCI bus slots (4), 32-bit VESA local bus slots (2)
NPU Options	None



CONNECTIONS			
Purpose	Location	Purpose	Location
Turbo LED	J10	Reset switch	J19
Power LED & keylock	J12	IRQ legacy connector	J31
Turbo switch	J14	32-bit PCI bus slots	PC1 - PC4
Speaker	J18	32-bit VESA Local bus slots	SL1 & SL2

Continued on next page...

TYAN COMPUTER CORPORATION

S1452 REV. 1.0

... continued from previous page

USER CONFIGURABLE SETTINGS		
Function	Jumper	Position
Flash BIOS voltage select 5 volt	J15	pins 2 & 3 closed
Flash BIOS voltage select 12 volt	J15	pins 1 & 2 closed

DRAM CONFIGURATION			
Size	Bank 0	Bank 1	Bank 2
2MB	(2) 256K x 36	NONE	NONE
4MB	(2) 256K x 36	(2) 256K x 36	NONE
4MB	(2) 512K x 36	NONE	NONE
6MB	(2) 256K x 36	(2) 256K x 36	(2) 256K x 36
6MB	(2) 512K x 36	(2) 256K x 36	NONE
6MB	(2) 256K x 36	(2) 512K x 36	NONE
8MB	(2) 512K x 36	(2) 256K x 36	(2) 256K x 36
8MB	(2) 512K x 36	(2) 512K x 36	NONE
8MB	(2) 1M x 36	NONE	NONE
10MB	(2) 1M x 36	(2) 256K x 36	NONE
10MB	(2) 256K x 36	(2) 512K x 36	(2) 512K x 36
10MB	(2) 256K x 36	(2) 1M x 36	NONE
12MB	(2) 1M x 36	(2) 256K x 36	(2) 256K x 36
12MB	(2) 1M x 36	(2) 512K x 36	NONE
12MB	(2) 512K x 36	(2) 512K x 36	(2) 512K x 36
12MB	(2) 512K x 36	(2) 1M x 36	NONE
16MB	(2) 1M x 36	(2) 512K x 36	(2) 512K x 36
16MB	(2) 1M x 36	(2) 1M x 36	NONE
16MB	(2) 2M x 36	NONE	NONE
18MB	(2) 256K x 36	(2) 1M x 36	(2) 1M x 36
18MB	(2) 2M x 36	(2) 256K x 36	NONE
18MB	(2) 256K x 36	(2) 2M x 36	NONE
20MB	(2) 512K x 36	(2) 1M x 36	(2) 1M x 36
20MB	(2) 512K x 36	(2) 2M x 36	NONE
20MB	(2) 2M x 36	(2) 256K x 36	(2) 256K x 36
20MB	(2) 2M x 36	(2) 512K x 36	NONE
24MB	(2) 2M x 36	(2) 512K x 36	(2) 512K x 36
24MB	(2) 2M x 36	(2) 1M x 36	NONE
24MB	(2) 1M x 36	(2) 2M x 36	NONE
32MB	(2) 2M x 36	(2) 1M x 36	(2) 1M x 36
32MB	(2) 2M x 36	(2) 2M x 36	NONE
32MB	(2) 4M x 36	NONE	NONE
34MB	(2) 4M x 36	(2) 256K x 36	NONE
34MB	(2) 256K x 36	(2) 2M x 36	(2) 2M x 36
34MB	(2) 256K x 36	(2) 4M x 36	NONE
36MB	(2) 4M x 36	(2) 256K x 36	(2) 256K x 36
36MB	(2) 4M x 36	(2) 512K x 36	NONE
36MB	(2) 512K x 36	(2) 2M x 36	(2) 2M x 36
36MB	(2) 512K x 36	(2) 4M x 36	NONE

Continued on next page...

TYAN COMPUTER CORPORATION

S1452 REV. 1.0

... continued from previous page

DRAM CONFIGURATION (CON'T)			
Size	Bank 0	Bank 1	Bank 2
40MB	(2) 4M x 36	(2) 512K x 36	(2) 512K x 36
40MB	(2) 4M x 36	(2) 1M x 36	NONE
40MB	(2) 1M x 36	(2) 2M x 36	(2) 2M x 36
40MB	(2) 1M x 36	(2) 4M x 36	NONE
48MB	(2) 4M x 36	(2) 1M x 36	(2) 1M x 36
48MB	(2) 4M x 36	(2) 2M x 36	NONE
48MB	(2) 2M x 36	(2) 2M x 36	(2) 2M x 36
48MB	(2) 2M x 36	(2) 4M x 36	NONE
64MB	(2) 4M x 36	(2) 2M x 36	(2) 2M x 36
64MB	(2) 4M x 36	(2) 4M x 36	NONE
64MB	(2) 8M x 36	NONE	NONE
66MB	(2) 8M x 36	(2) 256K x 36	NONE
66MB	(2) 256K x 36	(2) 4M x 36	(2) 4M x 36
66MB	(2) 256K x 36	(2) 8M x 36	NONE
68MB	(2) 512K x 36	(2) 4M x 36	(2) 4M x 36
68MB	(2) 512K x 36	(2) 8M x 36	NONE
68MB	(2) 8M x 36	(2) 256K x 36	(2) 256K x 36
68MB	(2) 8M x 36	(2) 512K x 36	NONE
72MB	(2) 8M x 36	(2) 512K x 36	(2) 512K x 36
72MB	(2) 8M x 36	(2) 1M x 36	NONE
72MB	(2) 1M x 36	(2) 4M x 36	(2) 4M x 36
72MB	(2) 1M x 36	(2) 8M x 36	NONE
80MB	(2) 8M x 36	(2) 1M x 36	(2) 1M x 36
80MB	(2) 8M x 36	(2) 2M x 36	NONE
80MB	(2) 2M x 36	(2) 4M x 36	(2) 4M x 36
80MB	(2) 2M x 36	(2) 8M x 36	NONE
96MB	(2) 4M x 36	(2) 4M x 36	(2) 4M x 36
96MB	(2) 4M x 36	(2) 8M x 36	NONE
96MB	(2) 8M x 36	(2) 2M x 36	(2) 2M x 36
96MB	(2) 8M x 36	(2) 4M x 36	NONE
128MB	(2) 8M x 36	(2) 4M x 36	(2) 4M x 36
128MB	(2) 8M x 36	(2) 8M x 36	NONE
130MB	(2) 256K x 36	(2) 8M x 36	(2) 8M x 36
132MB	(2) 512K x 36	(2) 8M x 36	(2) 8M x 36
136MB	(2) 1M x 36	(2) 8M x 36	(2) 8M x 36
144MB	(2) 2M x 36	(2) 8M x 36	(2) 8M x 36
160MB	(2) 4M x 36	(2) 8M x 36	(2) 8M x 36
192MB	(2) 8M x 36	(2) 8M x 36	(2) 8M x 36

CACHE CONFIGURATION	
Size	Bank 0
256KB	(8) 32K x 8
512KB	(8) 64K x 8

Continued on next page...

TYNAN COMPUTER CORPORATION

S1452 REV. 1.0

... continued from previous page

CACHE JUMPER CONFIGURATION		
Size	J4	J5
256KB	pins 1 & 2 closed	pins 1 & 2 closed
512KB	pins 2 & 3 closed	pins 1 & 2 closed

CPU SPEED CONFIGURATION			
Speed	J6	J7	J8
90MHz	Open	pins 1 & 2 closed	Open
100MHz	pins 1 & 2 closed	pins 1 & 2 closed	Open

IRQ LEGACY CONNECTOR CONFIGURATION	
Description	J31
No connection	pin 1
No connection	pin 2
Interrupt 5	pin 3
Interrupt 14	pin 4
Interrupt 15	pin 5
Interrupt 6	pin 6
Interrupt 7	pin 7
No connection	pin 8
Interrupt 9	pin 9
Interrupt 10	pin 10
Interrupt 11	pin 11
Interrupt 12	pin 12
Interrupt 3	pin 13
Interrupt 4	pin 14