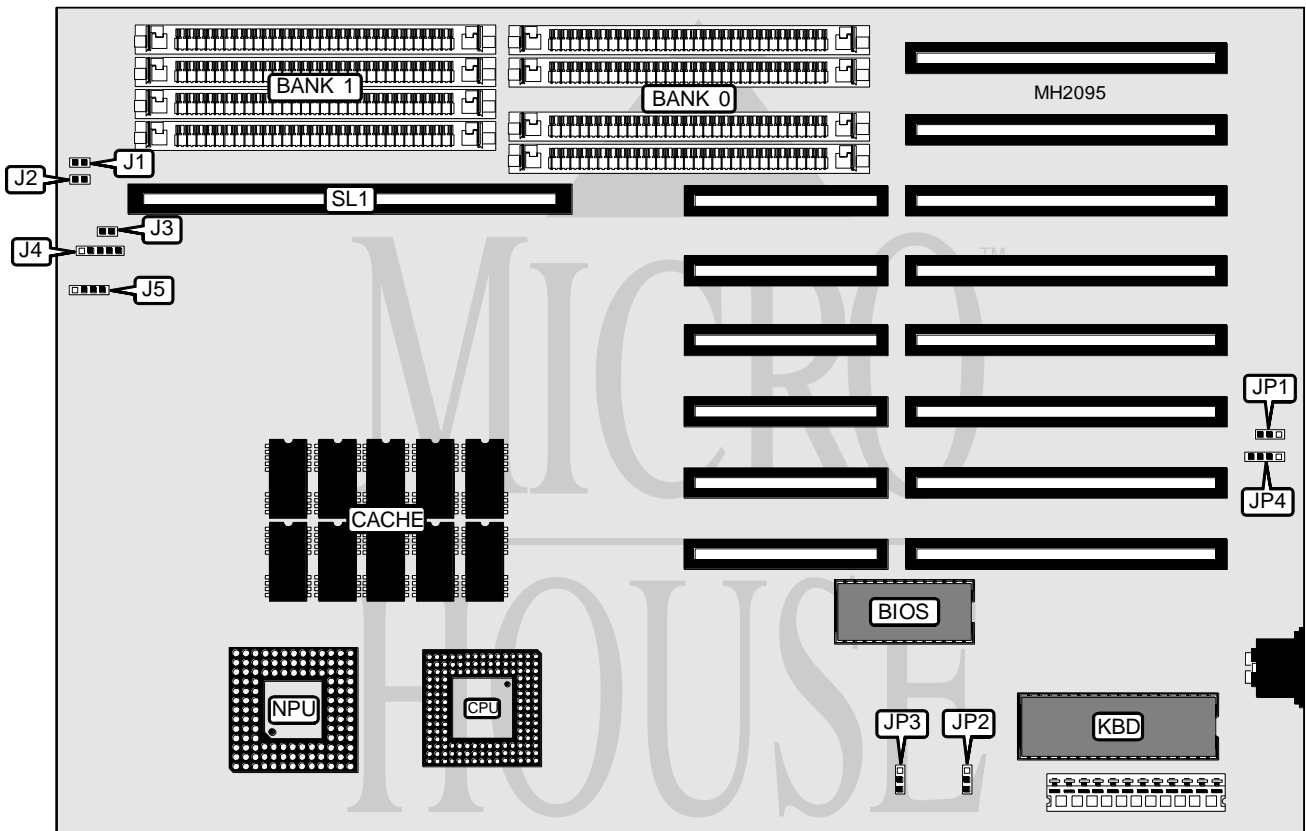


# ASUS COMPUTER INTERNATIONAL

## 386/33-64K

**Processor** 80386DX  
**Processor Speed** 33MHz  
**Chip Set** ASIC  
**Max. Onboard DRAM** 16MB (8MB on memory card)  
**Cache** 64KB  
**BIOS** Award  
**Dimensions** 330mm x 218mm  
**I/O Options** 32-bit external memory card  
**NPU Options** 80387DX/3167



CONNECTIONS			
Purpose	Location	Purpose	Location
Reset switch	J1	Power LED & keylock	J5
Turbo switch	J2	External battery	JP4
Turbo LED	J3	32-bit external memory card	SL1
Speaker	J4		

Continued on next page...

# ASUS COMPUTER INTERNATIONAL

## 386/33-64K

... continued from previous page.

USER CONFIGURABLE SETTINGS		
Function	Jumper	Position
í Battery type select external	JP1	pins 2 & 3 closed
Battery type select internal	JP1	pins 1 & 2 closed
í Monitor type select monochrome	JP2	pins 1 & 2 closed
Monitor type select color	JP2	pins 2 & 3 closed
í Power good signal detect from board	JP3	pins 1 & 2 closed
Power good signal detect from power supply	JP3	pins 2 & 3 closed

DRAM CONFIGURATION		
Size	Bank 0	Bank 1
1MB	(4) 256K x 9	NONE
2MB	(4) 256K x 9	(4) 256K x 9
4MB	(4) 1M x 9	NONE
5MB	(4) 256K x 9	(4) 1M x 9
8MB	(4) 1M x 9	(4) 1M x 9

DRAM CONFIGURATION ( MEMORY BOARD)		
Size	Bank 2	Bank 3
1MB	(4) 256K x 9	NONE
2MB	(4) 256K x 9	(4) 256K x 9
4MB	(4) 1M x 9	NONE
5MB	(4) 256K x 9	(4) 1M x 9
8MB	(4) 1M x 9	(4) 1M x 9

CACHE CONFIGURATION	
Size	Bank 0
64KB	(10) 16K x 4
Note: Cache is factory installed and is not configurable.	