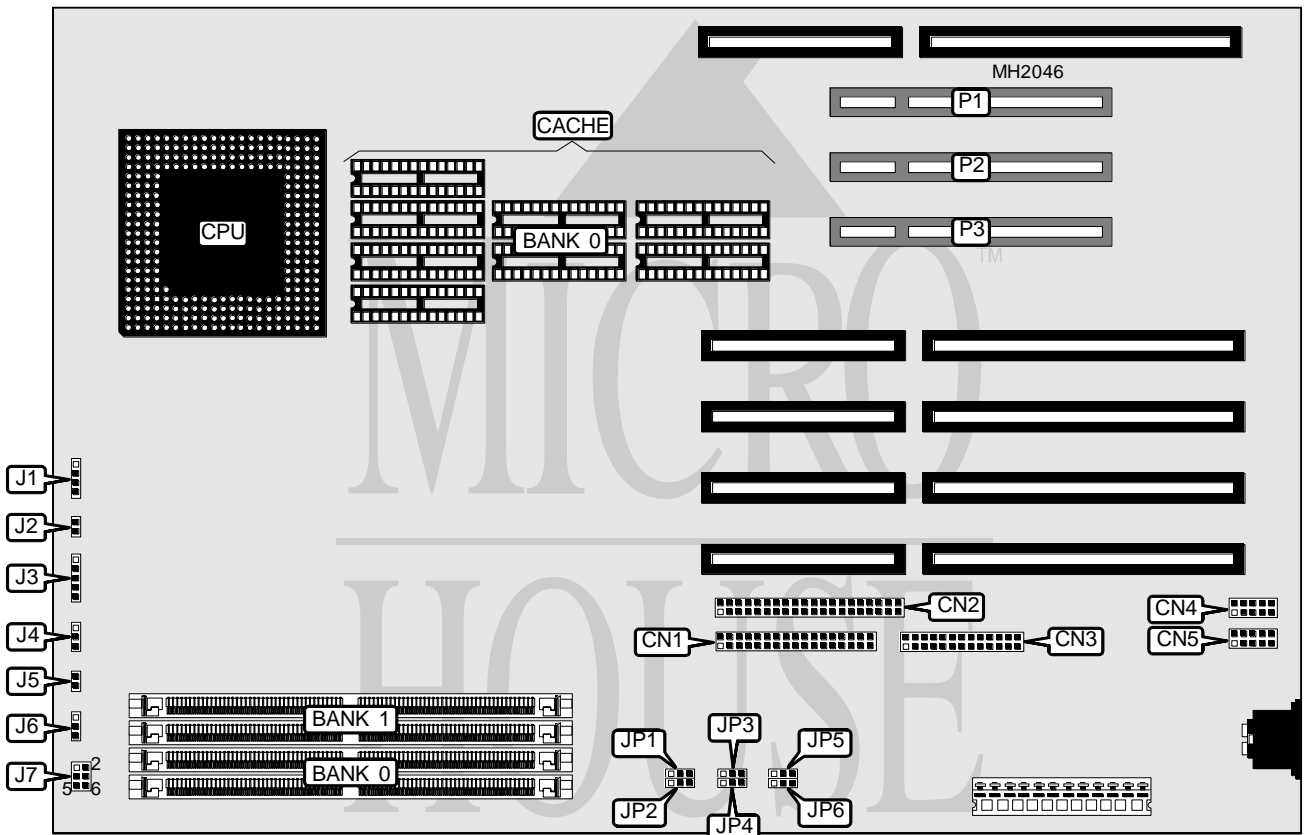


CSS LABORATORIES, INC. PREFERRED 560/566 PCI

Processor	Pentium
Processor Speed	60/66MHz
Chip Set	Intel
Max. Onboard DRAM	128MB
Cache	256KB
BIOS	AMI
Dimensions	330mm x 218mm
I/O Options	32-bit PCI bus slots (3), floppy drive interface, IDE interface, parallel port, serial ports (2)
NPU Options	None



CONNECTIONS			
Purpose	Location	Purpose	Location
Floppy drive interface	CN1	Reset switch	J2
IDE interface	CN2	Power LED & keylock	J3
Parallel port	CN3	IDE interface LED	J4
Serial port 2	CN4	Turbo LED	J5
Serial port 1	CN5	Turbo switch	J6
Speaker	J1	32-bit PCI bus slots	P1, P2 & P3

Continued next page...

CSS LABORATORIES, INC.

PREFERRED 560/566 PCI

... continued from previous page.

USER CONFIGURABLE SETTINGS		
Function	Jumper	Position
í CMOS memory normal operation	JP1	pins 1 & 2 closed
CMOS memory clear	JP1	pins 2 & 3 closed
í Flash BIOS recovery mode	JP2	pins 1 & 2 closed
Flash BIOS normal mode	JP2	pins 2 & 3 closed
í CMOS entry enabled	JP3	pins 1 & 2 closed
CMOS entry disabled	JP3	pins 2 & 3 closed
í Flash BIOS write protect enabled	JP4	pins 1 & 2 closed
Flash BIOS write protect disabled	JP4	pins 2 & 3 closed
í Monitor type select monochrome	JP5	pins 1 & 2 closed
Monitor type select color	JP5	pins 2 & 3 closed
í Password enabled	JP6	pins 1 & 2 closed
Password disabled	JP6	pins 2 & 3 closed

DRAM CONFIGURATION		
Size	Bank 0	Bank 1
2MB	(2) 256K x 36	NONE
4MB	(2) 256K x 36	(2) 256K x 36
4MB	(2) 512K x 36	NONE
6MB	(2) 256K x 36	(2) 512K x 36
6MB	(2) 512K x 36	(2) 256K x 36
8MB	(2) 512K x 36	(2) 512K x 36
8MB	(2) 1M x 36	NONE
10MB	(2) 256K x 36	(2) 1M x 36
10MB	(2) 1M x 36	(2) 256K x 36
12MB	(2) 512K x 36	(2) 1M x 36
12MB	(2) 1M x 36	(2) 512K x 36
16MB	(2) 1M x 36	(2) 1M x 36
16MB	(2) 2M x 36	NONE
18MB	(2) 256K x 36	(2) 2M x 36
18MB	(2) 2M x 36	(2) 256K x 36
20MB	(2) 512K x 36	(2) 2M x 36
20MB	(2) 2M x 36	(2) 512K x 36
24MB	(2) 1M x 36	(2) 2M x 36
24MB	(2) 2M x 36	(2) 1M x 36
32MB	(2) 4M x 36	NONE
32MB	(2) 2M x 36	(2) 2M x 36
34MB	(2) 256K x 36	(2) 4M x 36
34MB	(2) 4M x 36	(2) 256K x 36
36MB	(2) 512K x 36	(2) 4M x 36
36MB	(2) 4M x 36	(2) 512K x 36
40MB	(2) 1M x 36	(2) 4M x 36
40MB	(2) 4M x 36	(2) 1M x 36
48MB	(2) 4M x 36	(2) 2M x 36

Continued next page...

CSS LABORATORIES, INC.
PREFERRED 560/566 PCI

... continued from previous page.

DRAM CONFIGURATION (CON'T)		
Size	Bank 0	Bank 1
48MB	(2) 2M x 36	(2) 4M x 36
64MB	(2) 4M x 36	(2) 4M x 36
64MB	(2) 8M x 36	NONE
66MB	(2) 256K x 36	(2) 8M x 36
66MB	(2) 8M x 36	(2) 256K x 36
68MB	(2) 512K x 36	(2) 8M x 36
68MB	(2) 8M x 36	(2) 512K x 36
72MB	(2) 1M x 36	(2) 8M x 36
72MB	(2) 8M x 36	(2) 1M x 36
80MB	(2) 2M x 36	(2) 8M x 36
80MB	(2) 8M x 36	(2) 2M x 36
96MB	(2) 4M x 36	(2) 8M x 36
96MB	(2) 8M x 36	(2) 4M x 36
128MB	(2) 8M x 36	(2) 8M x 36

CACHE CONFIGURATION	
Size	Bank 0
0KB	NONE
256KB	(8) 32K x 8

CPU SPEED CONFIGURATION	
Speed	J7
60MHz	pins 4 & 6 closed
66MHz	pins 2 & 4 closed