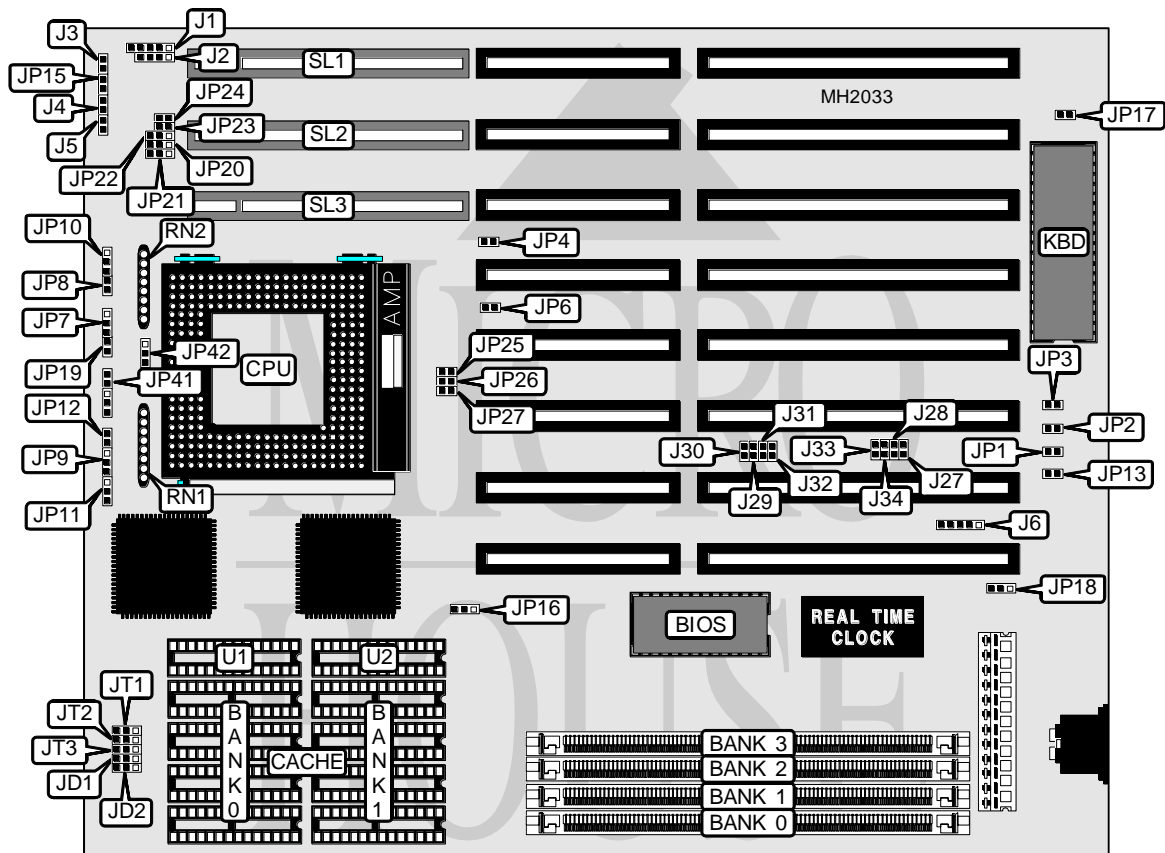


# YOUNG MICRO SYSTEMS, INC.

## VEGA 486 GREEN PC

<b>Processor</b>	CX486SX/AMD80486SX/80486SX/CX487DX/AMD80486DX/80486DX 80486DX2/80486DX4/Pentium Overdrive
<b>Processor Speed</b>	25/33/40/50(internal)/50/66(internal)/75(internal)/100(internal)MHz
<b>Chip Set</b>	Symphony Wagner
<b>Max. Onboard DRAM</b>	128MB
<b>Cache</b>	64/128/256/512/1024KB
<b>BIOS</b>	AMI/Phoenix
<b>Dimensions</b>	254mm x 218mm
<b>I/O Options</b>	32-bit VESA local bus slots (3), PS/2 mouse port
<b>NPU Options</b>	None



CONNECTIONS			
Purpose	Location	Purpose	Location
Power LED & keylock	J1	Turbo LED	J5
Speaker	J2	PS/2 mouse port	J6
Turbo switch	J3	Power suspend	JP15
Reset switch	J4	32-bit VESA Local bus slots	SL1, SL2,SL3

Continued next page...

**YOUNG MICRO SYSTEMS, INC.**  
**VEGA 486 GREEN PC**

... continued from previous page.

USER CONFIGURABLE SETTINGS		
Function	Jumper	Position
í Factory configured - do not alter	J27	Open
í Factory configured - do not alter	J28	Open
í Factory configured - do not alter	J29	Open
í Factory configured - do not alter	J30	Open
í Factory configured - do not alter	J31	Open
í Factory configured - do not alter	J32	Open
í Factory configured - do not alter	J33	Open
í Factory configured - do not alter	J34	Open
í Factory configured - do not alter	JP3	Open
í Factory configured - do not alter	JP9	Open
í Tag RAM separated	JP16	pins 1 & 2 closed
Tag RAM combined	JP16	pins 2 & 3 closed
í Factory configured - do not alter	JP17	Open
í Flash BIOS write protect enabled	JP18	pins 1 & 2 closed
Flash BIOS write protect disabled	JP18	pins 2 & 3 closed
í Factory configured - do not alter	JP19	Open
í Factory configured - do not alter	JP22	Open
í Factory configured - do not alter	JP28	Open
í Factory configured - do not alter	JP29	Open
í Factory configured - do not alter	JP30	Open
í Factory configured - do not alter	JP31	Open

DRAM CONFIGURATION				
Size	Bank 0	Bank 1	Bank 2	Bank 3
1MB	(1) 256K x 36	NONE	NONE	NONE
4MB	(1) 512K x 36	(1) 512K x 36	NONE	NONE
4MB	(1) 1M x 36	NONE	NONE	NONE
8MB	(1) 1M x 36	(1) 1M x 36	NONE	NONE
8MB	(1) 2M x 36	NONE	NONE	NONE
16MB	(1) 4M x 36	NONE	NONE	NONE
16MB	(1) 1M x 36	(1) 1M x 36	(1) 1M x 36	(1) 1M x 36
32MB	(1) 4M x 36	(1) 4M x 36	NONE	NONE
32MB	(1) 2M x 36	(1) 2M x 36	(1) 2M x 36	(1) 2M x 36
64MB	(1) 8M x 36	(1) 8M x 36	NONE	NONE
64MB	(1) 4M x 36	(1) 4M x 36	(1) 4M x 36	(1) 4M x 36
96MB	(1) 8M x 36	(1) 8M x 36	(1) 4M x 36	(1) 4M x 36
128MB	(1) 8M x 36	(1) 8M x 36	(1) 8M x 36	(1) 8M x 36

Continued next page...

# YOUNG MICRO SYSTEMS, INC.

## VEGA 486 GREEN PC

... continued from previous page.

CACHE CONFIGURATION				
Size	Bank 0	Bank 1	TAG (U1)	TAG (U2)
64KB	(4) 8K x 8	(4) 8K x 8	(1) 8K x 8	(1) 8K x 8
128KB	(4) 32K x 8	NONE	(1) 8K x 8	(1) 8K x 8
256KB	(4) 32K x 8	(4) 32K x 8	(1) 32K x 8	(1) 32K x 8
512KB	(4) 128K x 8	NONE	(1) 32K x 8	(1) 32K x 8
1MB	(4) 128K x 8	(4) 128K x 8	(1) 128K x 8	(1) 128K x 8

CACHE JUMPER CONFIGURATION					
Size	JD1	JD2	JT1	JT2	JT3
64KB	2 & 3	2 & 3	1 & 2	1 & 2	1 & 2
128KB	1 & 2	1 & 2	2 & 3	1 & 2	1 & 2
256KB	2 & 3	2 & 3	2 & 3	2 & 3	1 & 2
512KB	1 & 2	1 & 2	2 & 3	2 & 3	2 & 3
1MB	2 & 3	2 & 3	2 & 3	2 & 3	2 & 3

Note: Pins designated should be in the closed position.

CPU TYPE CONFIGURATION (CYRIX)								
Type	JP1	JP2	JP4	JP5	JP6	JP7	JP8	JP10
486SX (1X)	Open	Open	Open	2 & 3	Closed	1 & 2	Closed	Open
486SX (2X)	Open	Open	Open	2 & 3	Closed	1 & 2	Closed	Open
487DX (1X)	Open	Open	Open	1 & 2	Closed	1 & 2	Closed	Open
487DX (2X)	Open	Open	Open	1 & 2	Closed	1 & 2	Closed	Open

Note: Pins designated should be in the closed position.

CPU TYPE CONFIGURATION (CYRIX)							
Type	JP11	JP12	JP13	JP23	JP24	JP41	JP42
486SX (1X)	Open	Open	Closed	Closed	Closed	Open	Open
486SX (2X)	Open	Closed	Closed	Closed	Closed	Open	Open
487DX (1X)	1 & 2	Open	Closed	Closed	Closed	Open	Open
487DX (2X)	1 & 2	Closed	Closed	Closed	Closed	Open	Open

Note: Pins designated should be in the closed position.

CPU TYPE CONFIGURATION (AMD)								
Type	JP1	JP2	JP4	JP5	JP6	JP7	JP8	JP10
486SX (WT)	Open	Closed	Open	2 & 3	Closed	Open	Open	Open
486SX (WB)	Closed	Closed	Closed	2 & 3	Closed	Open	Open	Open
486DX (WT)	Open	Closed	Open	2 & 3	Closed	Open	Open	Open
486DX (WB)	Closed	Closed	Closed	2 & 3	Closed	Open	Open	Open

Note: Pins designated should be in the closed position.

Continued next page...

**YOUNG MICRO SYSTEMS, INC.**  
**VEGA 486 GREEN PC**

... continued from previous page.

CPU TYPE CONFIGURATION (AMD)							
Type	JP11	JP12	JP13	JP23	JP24	JP41	JP42
486SX (WT)	Open	Open	Open	Open	Open	2 & 3	2 & 3
486SX (WB)	Open	Open	Open	Open	Open	2 & 3	2 & 3
486DX (WT)	1 & 2	Open	Open	Open	Open	2 & 3	2 & 3
486DX (WB)	1 & 2	Open	Open	Open	Open	2 & 3	2 & 3

Note: Pins designated should be in the closed position.

CPU TYPE CONFIGURATION (INTEL 486)								
Type	JP1	JP2	JP4	JP5	JP6	JP7	JP8	JP10
486SX	Open	Open	Open	2 & 3	Closed	Open	Open	Open
486SL	Open	Closed	Open	1 & 2	Closed	Open	Open	Open
486DX/DX2	Open	Open	Open	1 & 2	Closed	Open	Open	Open
486DX4 (2X)	Open	Closed	Open	1 & 2	Closed	Open	Open	Open
486DX4 (3X)	Open	Closed	Open	1 & 2	Closed	Open	Open	Open

Note: Pins designated should be in the closed position.

CPU TYPE CONFIGURATION (INTEL 486)							
Type	JP11	JP12	JP13	JP23	JP24	JP41	JP42
486SX	Open	Open	Open	Closed	Closed	Open	Open
486SL	1 & 2	Open	Open	Open	Open	Open	Open
486DX/DX2	1 & 2	Open	Open	Closed	Closed	Open	Open
486DX4 (2X)	2 & 3	Open	Open	Open	Open	Open	Open
486DX4 (3X)	2 & 3	Open	Open	Open	Open	Open	Open

Note: Pins designated should be in the closed position.

CPU TYPE CONFIGURATION (INTEL OVERDRIVE)								
Type	JP1	JP2	JP4	JP5	JP6	JP7	JP8	JP10
Overdrive (2X-WT)	Open	Closed	Open	1 & 2	Open	Open	Open	1 & 2
Overdrive (2X-WB)	Closed	Closed	Closed	1 & 2	Open	Open	Open	1 & 2
Overdrive (3X-WT)	Open	Closed	Open	1 & 2	Open	Open	Open	Open
Overdrive (3X-WB)	Closed	Closed	Closed	1 & 2	Open	Open	Open	Open

Note: Pins designated should be in the closed position.

CPU TYPE CONFIGURATION (INTEL OVERDRIVE)							
Type	JP11	JP12	JP13	JP23	JP24	JP41	JP42
Overdrive (2X-WT)	2 & 3	Open	Open	Open	Open	Open	Open
Overdrive (2X-WB)	2 & 3	Open	Open	Open	Open	Open	Open
Overdrive (3X-WT)	2 & 3	Open	Open	Open	Open	Open	Open
Overdrive (3X-WB)	2 & 3	Open	Open	Open	Open	Open	Open

Note: Pins designated should be in the closed position.

Continued next page...

# YOUNG MICRO SYSTEMS, INC.

## VEGA 486 GREEN PC

... continued from previous page.

CPU TYPE CONFIGURATION		
Type	RN1	RN2
CX 486SX	Not installed	Not installed
CX 487DX	Installed	Not installed
AMD 486SX	Not installed	Installed
AMD 486DX	Installed	Installed
Intel 486SX	Not installed	Not installed
Intel 486SL	Installed	Installed
Intel 486DX/DX2	Installed	Not installed
Intel 486DX4	Installed	Installed
Overdrive	Installed	Installed

CPU SPEED CONFIGURATION					
Speed	JP20	JP21	JP25	JP26	JP27
25MHz	1 & 2	1 & 2	Closed	Open	Closed
33MHz	2 & 3	1 & 2	Open	Open	Closed
40MHz	2 & 3	2 & 3	Closed	Closed	Open
50iMHz	1 & 2	1 & 2	Closed	Open	Closed
50MHz	2 & 3	2 & 3	Open	Closed	Open
66iMHz	2 & 3	1 & 2	Open	Open	Closed
75iMHz	1 & 2	1 & 2	Closed	Open	Closed
100iMHz	2 & 3	2 & 3	Open	Closed	Open

Note: Pins designated should be in the closed position.