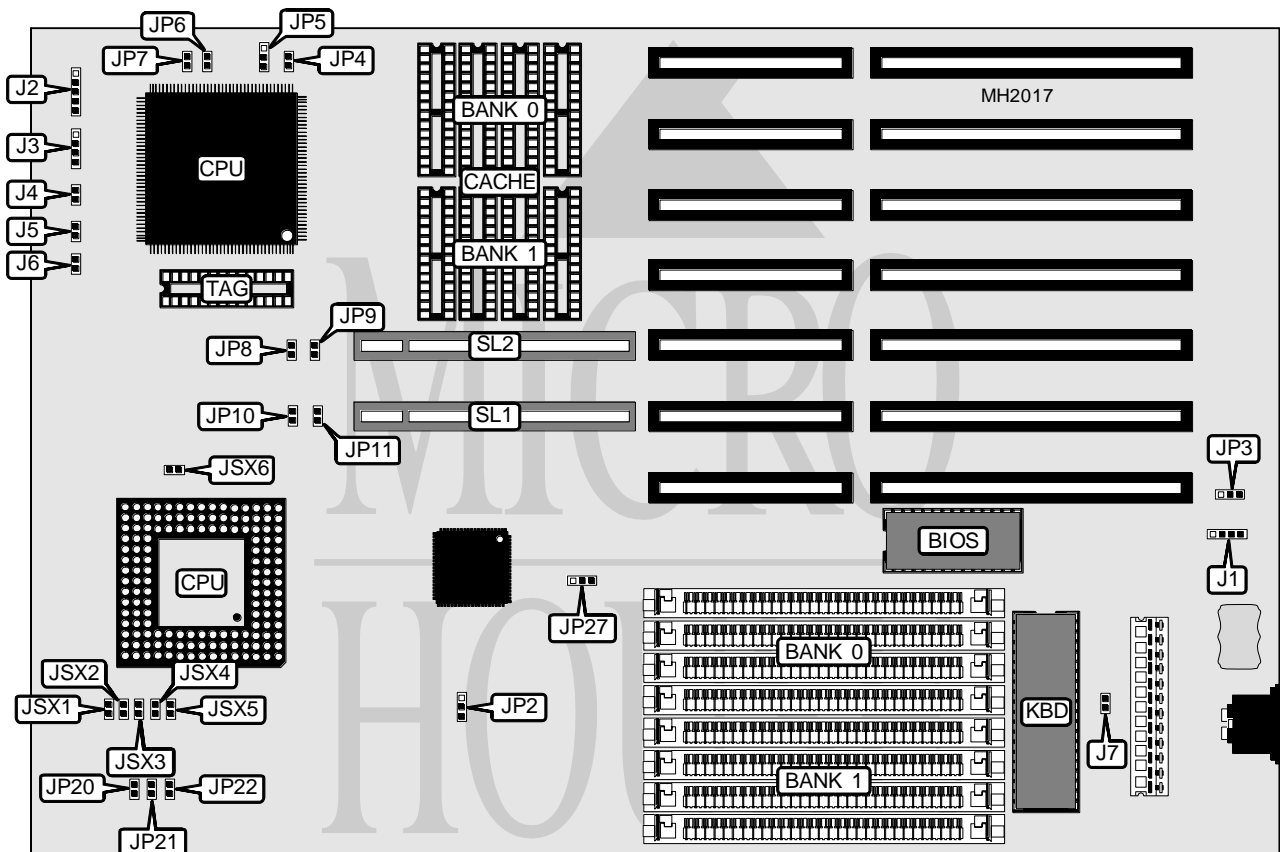


J-BOND COMPUTER SYSTEMS CORPORATION

486 VL450C-1

Processor 80486SX/80486DX/80486DX2
Processor Speed 20/25/33/40(internal)/50(internal)/50/66(internal)MHz
Chip Set SIS
Max. Onboard DRAM 32MB
Cache 64/128/256KB
BIOS AMI
Dimensions 230mm x 218mm
I/O Options 32-bit VESA local bus slots (2)
NPU Options None



CONNECTIONS			
Purpose	Location	Purpose	Location
External battery	J1	Turbo LED	J5
Power LED & keylock	J2	Reset switch	J6
Speaker	J3	32-bit VESA Local bus slots	SL1 & SL2
Turbo switch	J4		

Continued next page...

J-BOND COMPUTER SYSTEMS CORPORATION

486 VL450C - 1

... continued from previous page.

USER CONFIGURABLE SETTINGS		
Function	Jumper	Position
í Factory configured - do not alter	J7	Open
í A20 type select fast gate	JP2	pins 1 & 2 closed
A20 type select keyboard controller gate	JP2	pins 2 & 3 closed
í CMOS memory normal operation	JP3	Open
CMOS memory clear	JP3	pins 2 & 3 closed
í VESA local bus normal operation	JP27	pins 1 & 2 closed
VESA local bus compatibility problems (See note below)	JP27	pins 2 & 3 closed
í PQFP CPU enabled	JSX6	Open
PQFP CPU disabled	JSX6	Closed

Note: If compatibility problems arise with nonstandard VESA local bus peripherals, jumper pins 2 & 3.

DRAM CONFIGURATION		
Size	Bank 0	Bank 1
1MB	(4) 256K x 9	NONE
2MB	(4) 256K x 9	(4) 256K x 9
4MB	(4) 1M x 9	NONE
8MB	(4) 1M x 9	(4) 1M x 9
16MB	(4) 4M x 9	NONE
20MB	(4) 1M x 9	(4) 4M x 9
32MB	(4) 4M x 9	(4) 4M x 9

CACHE CONFIGURATION			
Size	Bank 0	Bank 1	TAG
64KB	(4) 8K x 8	(4) 8K x 8	(1) 8K x 8 or (1) 32K x 8
128KB	(4) 32K x 8	NONE	(1) 8K x 8 or (1) 32K x 8
256KB	(4) 32K x 8	(4) 32K x 8	(1) 32K x 8

CACHE JUMPER CONFIGURATION				
Size	JP4	JP5	JP6	JP7
64KB	Open	Open	Open	Open
128KB	Closed	pins 1 & 2 closed	Open	Closed
256KB	Closed	pins 2 & 3 closed	Closed	Closed

CPU TYPE CONFIGURATION					
Type	JSX1	JSX2	JSX3	JSX4	JSX5
80486SX	Open	Open	Open	Closed	Open
80487SX	Open	Closed	Closed	Open	Closed
80486DX/DX2	Closed	Open	Closed	Open	Closed
Overdrive	Open	Closed	Closed	Open	Closed

Continued next page...

J-BOND COMPUTER SYSTEMS CORPORATION

486 VL450C-1

... continued from previous page.

CPU SPEED CONFIGURATION			
Speed	JP20	JP21	JP22
20MHz	Open	Open	Open
25MHz	Closed	Open	Open
33MHz	Closed	Closed	Closed
40MHz	Closed	Closed	Open
50MHz	Closed	Open	Open
50MHz	Open	Open	Closed
66MHz	Closed	Closed	Closed

VESA WAIT STATE/BUS SPEED CONFIGURATION					
CPU speed	Wait states	JP8	JP9	JP10	JP11
< 33MHz	0 wait states	Open	Open	Open	Open
> 33MHz	1 wait state	Short	Short	Short	Short