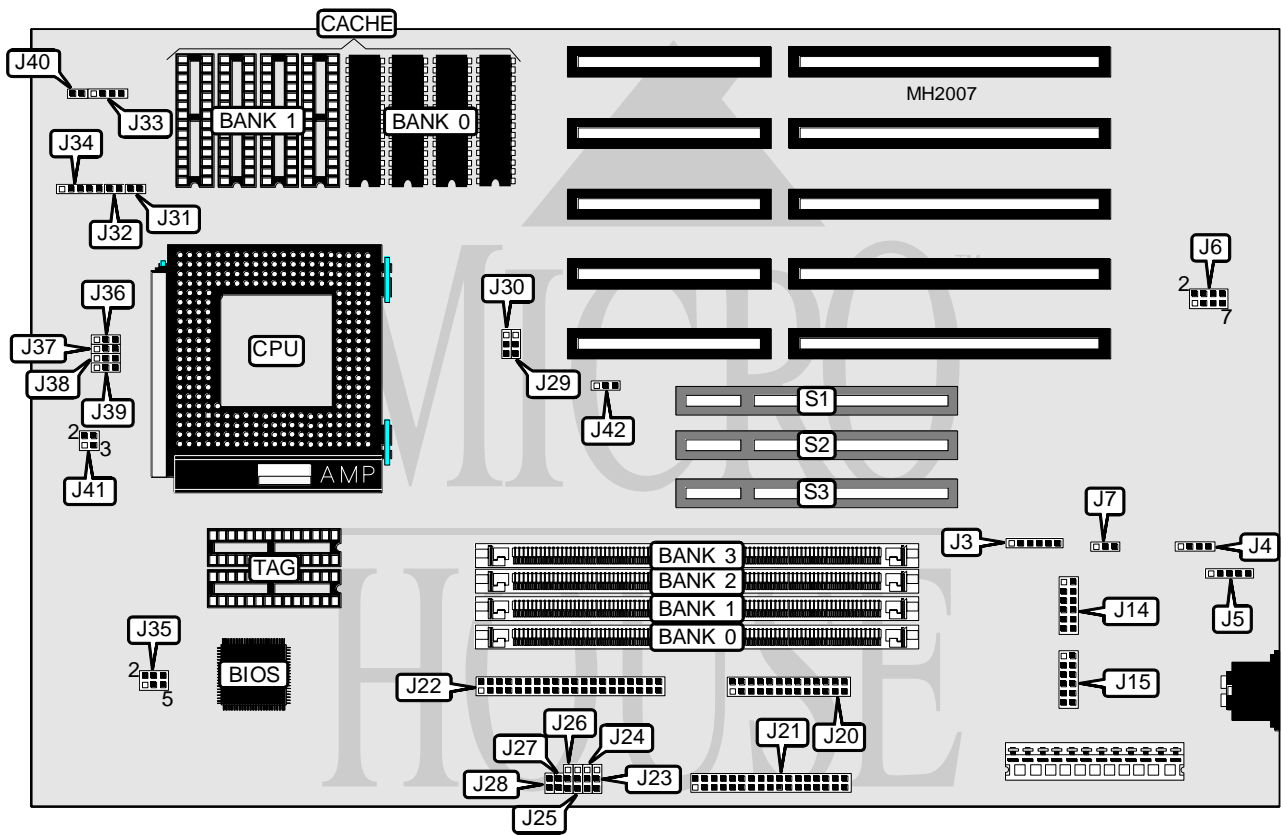


DIAMOND FLOWER, INC. P486-ICA (REV. A)

Processor 80486SX/80486DX/80486DX2/Pentium Overdrive
Processor Speed 25/33/50(internal)/66(internal)MHz
Chip Set Intel
Max. Onboard DRAM 128MB
Cache 128/256KB
BIOS Phoenix
Dimensions 330mm x 218mm
I/O Options 32-bit PCI bus slots (3), floppy drive interface, IDE interface, parallel port, PS/2 mouse interface, serial ports (2)
NPU Options None



CONNECTIONS			
Purpose	Location	Purpose	Location
PCI 3.3 volt power connector	J3	IDE interface LED	J31
External battery	J4	Reset switch	J32
PS/2 mouse port	J5	Speaker	J33
Serial port 1	J14	Power LED & keylock	J34
Serial port 2	J15	Chassis fan power	J36
Parallel port	J20	Turbo LED	J40
Floppy drive interface	J21	32-bit PCI bus slots	S1, S2 & S3
IDE interface	J22		

Continued next page...

DIAMOND FLOWER, INC.
P486-ICA (REV. A)

... continued from previous page.

USER CONFIGURABLE SETTINGS		
Function	Jumper	Position
í Battery type select 3.6 volt	J7	pins 1 & 2 closed
Battery type select 4.5 volt	J7	pins 2 & 3 closed
í On board I/O controller enabled	J23	pins 2 & 3 closed
On board I/O controller disabled	J23	pins 1 & 2 closed
í Memory parity enabled	J24	pins 1 & 2 closed
Memory parity disabled	J24	pins 2 & 3 closed
í Boot block disabled	J25	pins 1 & 2 closed
Boot block enabled	J25	pins 2 & 3 closed
í IDE DMA disabled	J26	pins 1 & 2 closed
IDE DMA enabled (WD Caviar/Conner CP30254 drives only)	J26	pins 2 & 3 closed
í CMOS memory normal operation	J27	Open
CMOS memory clear	J27	Closed
í Factory configured - do not alter	J28	Open
í DMA Channel 1 enabled	J29 & J30	pins 2 & 3 closed
DMA Channel 1 disabled	J29 & J30	pins 1 & 2 closed
í L1 write through & L2 write back cache enabled	J37 & J38	pins 1 & 2 closed
L1 write back & L1 write through cache enabled	J37 & J38	pins 2 & 3 closed
í CPU speed select 33MHz	J39	pins 2 & 3 closed
CPU speed select 25MHz	J39	pins 1 & 2 closed
í IRQ14 enabled (on board IDE controller installed)	J42	pins 1 & 2 closed
IRQ15 enabled (2 IDE controllers installed)	J42	pins 2 & 3 closed

DRAM CONFIGURATION				
Size	Bank 0	Bank 1	Bank 2	Bank 3
2MB	(1) 256K x 36	(1) 256K x 36	NONE	NONE
4MB	(1) 256K x 36	(1) 256K x 36	(1) 256K x 36	(1) 256K x 36
4MB	(1) 512K x 36	(1) 512K x 36	NONE	NONE
6MB	(1) 256K x 36	(1) 256K x 36	(1) 512K x 36	(1) 512K x 36
6MB	(1) 512K x 36	(1) 512K x 36	(1) 256K x 36	(1) 256K x 36
8MB	(1) 512K x 36	(1) 512K x 36	(1) 512K x 36	(1) 512K x 36
8MB	(1) 1M x 36	(1) 1M x 36	NONE	NONE
10MB	(1) 256K x 36	(1) 256K x 36	(1) 1M x 36	(1) 1M x 36
10MB	(1) 1M x 36	(1) 1M x 36	(1) 256K x 36	(1) 256K x 36
12MB	(1) 512K x 36	(1) 512K x 36	(1) 1M x 36	(1) 1M x 36
12MB	(1) 1M x 36	(1) 1M x 36	(1) 512K x 36	(1) 512K x 36
16MB	(1) 1M x 36	(1) 1M x 36	(1) 1M x 36	(1) 1M x 36
16MB	(1) 2M x 36	(1) 2M x 36	NONE	NONE
18MB	(1) 256K x 36	(1) 256K x 36	(1) 2M x 36	(1) 2M x 36
18MB	(1) 2M x 36	(1) 2M x 36	(1) 256K x 36	(1) 256K x 36
20MB	(1) 512K x 36	(1) 512K x 36	(1) 2M x 36	(1) 2M x 36
20MB	(1) 2M x 36	(1) 2M x 36	(1) 512K x 36	(1) 512K x 36
24MB	(1) 1M x 36	(1) 1M x 36	(1) 2M x 36	(1) 2M x 36
24MB	(1) 2M x 36	(1) 2M x 36	(1) 1M x 36	(1) 1M x 36

Continued next page...

DIAMOND FLOWER, INC.

P486-ICA (REV. A)

... continued from previous page.

DRAM CONFIGURATION (CON'T)				
Size	Bank 0	Bank 1	Bank 2	Bank 3
32MB	(1) 2M x 36	(1) 2M x 36	(1) 2M x 36	(1) 2M x 36
32MB	(1) 4M x 36	(1) 4M x 36	NONE	NONE
34MB	(1) 256K x 36	(1) 256K x 36	(1) 4M x 36	(1) 4M x 36
34MB	(1) 4M x 36	(1) 4M x 36	(1) 256K x 36	(1) 256K x 36
36MB	(1) 512K x 36	(1) 512K x 36	(1) 4M x 36	(1) 4M x 36
36MB	(1) 4M x 36	(1) 4M x 36	(1) 512K x 36	(1) 512K x 36
40MB	(1) 1M x 36	(1) 1M x 36	(1) 4M x 36	(1) 4M x 36
40MB	(1) 4M x 36	(1) 4M x 36	(1) 1M x 36	(1) 1M x 36
48MB	(1) 4M x 36	(1) 4M x 36	(1) 2M x 36	(1) 2M x 36
48MB	(1) 2M x 36	(1) 2M x 36	(1) 4M x 36	(1) 4M x 36
64MB	(1) 4M x 36	(1) 4M x 36	(1) 4M x 36	(1) 4M x 36
64MB	(1) 8M x 36	(1) 8M x 36	NONE	NONE
66MB	(1) 256K x 36	(1) 256K x 36	(1) 8M x 36	(1) 8M x 36
66MB	(1) 8M x 36	(1) 8M x 36	(1) 256K x 36	(1) 256K x 36
68MB	(1) 512K x 36	(1) 512K x 36	(1) 8M x 36	(1) 8M x 36
68MB	(1) 8M x 36	(1) 8M x 36	(1) 512K x 36	(1) 512K x 36
72MB	(1) 1M x 36	(1) 1M x 36	(1) 8M x 36	(1) 8M x 36
72MB	(1) 8M x 36	(1) 8M x 36	(1) 1M x 36	(1) 1M x 36
80MB	(1) 2M x 36	(1) 2M x 36	(1) 8M x 36	(1) 8M x 36
80MB	(1) 8M x 36	(1) 8M x 36	(1) 2M x 36	(1) 2M x 36
96MB	(1) 4M x 36	(1) 4M x 36	(1) 8M x 36	(1) 8M x 36
96MB	(1) 8M x 36	(1) 8M x 36	(1) 4M x 36	(1) 4M x 36
128MB	(1) 8M x 36	(1) 8M x 36	(1) 8M x 36	(1) 8M x 36

CACHE CONFIGURATION			
Size	Bank 0	Bank 1	TAG
128KB	(4) 32K x 8	NONE	(2) 32K x 8
256KB	(4) 32K x 8	(4) 32K x 8	(2) 32K x 8

Note: Bank 0 is factory installed and is not configurable.

CACHE JUMPER CONFIGURATION		
Size	J41/ 1 & 2	J41/ 3 & 4
128KB	Open	pins 3 & 4 closed
256KB	pins 1 & 2 closed	Open

CPU VOLTAGE SELECT	
Voltage	J35
3.3	pins 1 & 3, 2 & 4 closed
5	pins 3 & 5, 4 & 6 closed

PCI IRQ CONFIGURATION	
IRQ	J6
9	pins 1 & 2 closed
10	pins 3 & 4 closed
11	pins 5 & 6 closed
14	pins 7 & 8 closed

