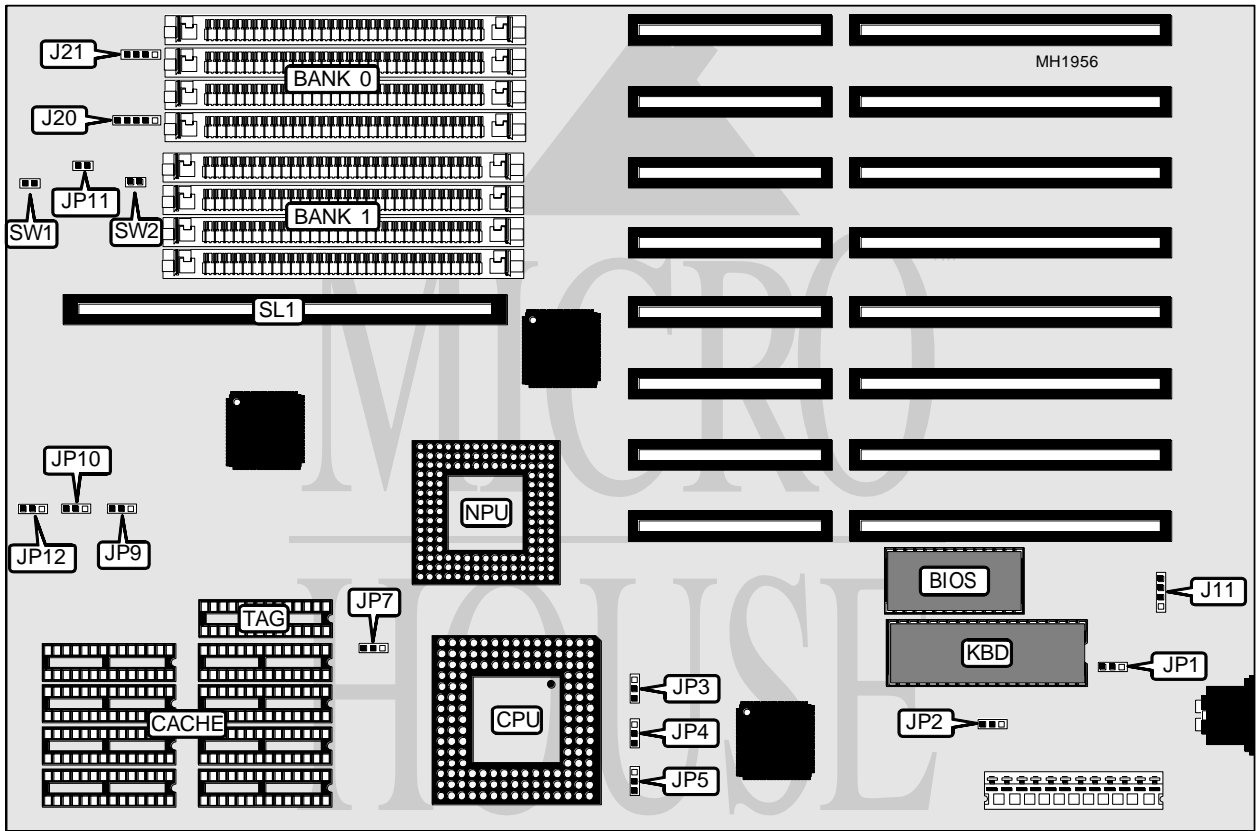


JC INFORMATION SYSTEMS CORPORATION

486 SX/DX MODEL 270

Processor	80486SX/80487SX/80486DX/80486DX2
Processor Speed	25/33/50(internal)/66(internal)MHz
Chip Set	C & T
Max. Onboard DRAM	32MB
Cache	64/256KB
BIOS	AMI
Dimensions	330mm x 218mm
I/O Options	32-bit memory expansion slot
NPU Options	4167



CONNECTIONS			
Purpose	Location	Purpose	Location
External battery	J11	32 bit memory expansion slot	SL1
Power LED & keylock	J20	Reset switch	SW1
Speaker	J21	Turbo switch	SW2
Turbo LED	JP11		

Continued next page...

JC INFORMATION SYSTEMS CORP.

486 SX/DX MODEL 270

... continued from previous page.

USER CONFIGURABLE SETTINGS		
Function	Jumper	Position
í Enable onboard battery	JP1	pins 2 & 3 closed
Enable external battery	JP1	Open
í Monitor type select color	JP2	Closed
Monitor type select monochrome	JP2	Open
í Factory configured do not alter	JP3	N/A
í Factory configured do not alter	JP4	N/A
í Factory configured do not alter	JP5	N/A
í Factory configured do not alter	JP7	N/A
í Factory configured do not alter	JP9	N/A
í Factory configured do not alter	JP10	N/A
í Turbo switch not available	JP11	Closed
í Factory configured do not alter	JP12	N/A

DRAM CONFIGURATION		
Size	Bank 0	Bank 1
1MB	(4) 256K x 9	NONE
2MB	(4) 256K x 9	(4) 256K x 9
4MB	(4) 1M x 9	NONE
5MB	(4) 1M x 9	(4) 256K x 9
8MB	(4) 1M x 9	(4) 1M x 9
16MB	(4) 4M x 9	NONE
20MB	(4) 4M x 9	(4) 1M x 9
32MB	(4) 4M x 9	(4) 4M x 9

CACHE CONFIGURATION		
Size	Bank 0	TAG
64KB	(8) 8K x 8	(1) 8K x 8
256KB	(8) 32K x 8	(1) 32K x 8