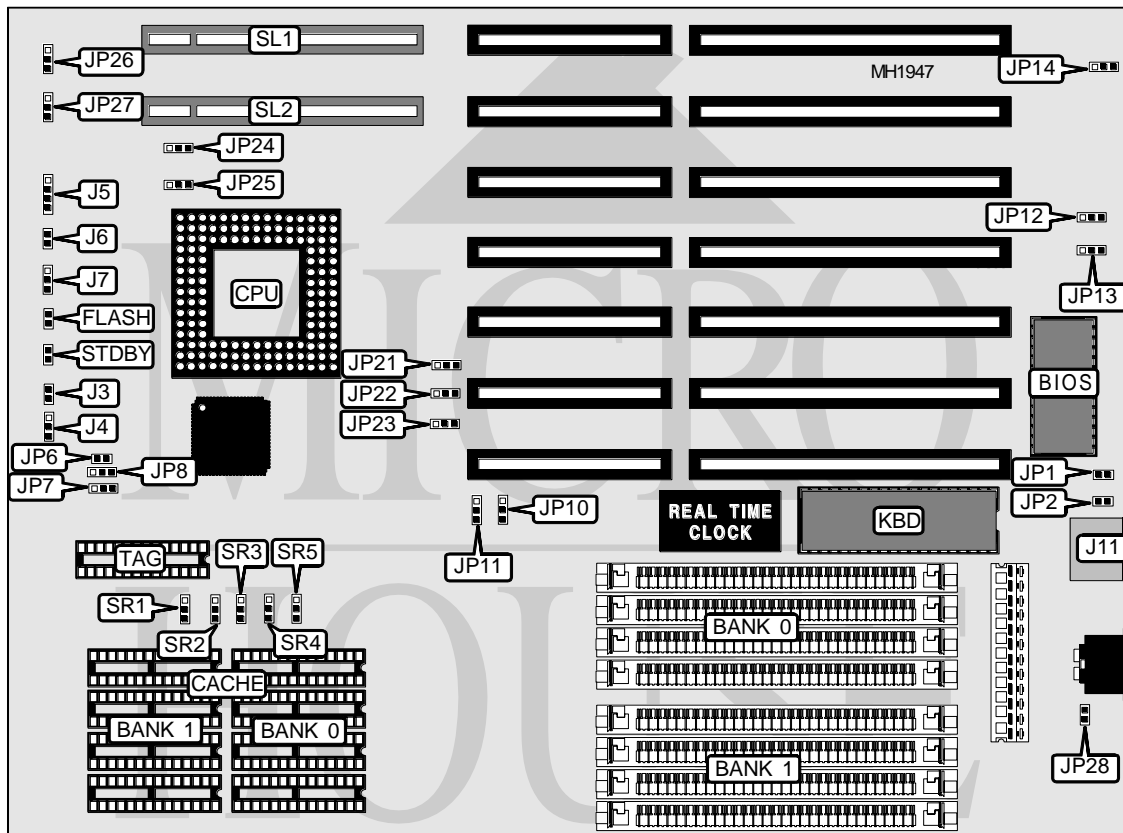


UNIDENTIFIED

LX400A/G

Processor	80486SX/80487SX/80486DX/80486DX2
Processor Speed	25/33/40/50(internal)/50/66(internal) MHz
Chip Set	SiS
Max. Onboard DRAM	32MB
Cache	64/128/256
BIOS	AMI
Dimensions	230mm x 218mm
I/O Options	32-bit VESA local bus slots (2), PS/2 mouse port
NPU Options	None



CONNECTIONS			
Purpose	Location	Purpose	Location
Flash LED connector	FLASH	Power LED & keylock	J7
Turbo LED	J3	PS/2 mouse connector	J11
Turbo switch	J4	Standby output connector	J28
Speaker	J5	32-bit VESA Local bus slot	S1
Reset switch	J6	32-bit VESA Local bus slot	S2

Continued next page...

UNIDENTIFIED

LX400A/G

... continued from previous page.

USER CONFIGURABLE SETTINGS		
Function	Jumper	Position
í Factory configured do not alter	JP1	Open
í Monitor type select color	JP2	Closed
Monitor type select monochrome	JP2	Open
í Factory configured do not alter	JP10	N/A
í Factory configured do not alter	JP11	N/A
PS/2 mouse interrupt	JP12	pins 1 & 2 closed
PS/2 mouse set at AT Bus IRQ12	JP12	pins 2 & 3 closed
í Factory configured do not alter	JP13	N/A
í Factory configured do not alter	JP14	N/A
í Factory configured do not alter	JP21	N/A
í Factory configured do not alter	JP22	N/A
í Factory configured do not alter	JP23	N/A
í Power saving mode switch off	STDBY	Open
Power saving mode switch on	STDBY	Closed

DRAM CONFIGURATION		
Size	Bank 0	Bank 1
1MB	(4) 256K x 9	NONE
2MB	(4) 256K x 9	(4) 256K x 9
4MB	(4) 1M x 9	NONE
8MB	(4) 1M x 9	(4) 1M x 9
16MB	(4) 4MB x 9	(4) 4MB x 9
20MB	(4) 1MB x 9	(4) 4MB x 9
32MB	(4) 4MB x 9	(4) 4MB x 9

CACHE JUMPER CONFIGURATION					
Size	SR1	SR2	SR3	SR4	SR5
64KB	pins 2 & 3	pins 2 & 3	pins 1 & 2	pins 1 & 2	pins 1 & 2
128KB	pins 1 & 2	pins 1 & 2	pins 2 & 3	pins 2 & 3	pins 1 & 2
256KB	pins 2 & 3	pins 2 & 3	pins 2 & 3	pins 2 & 3	pins 2 & 3
Note: Pins designated are in the closed position.					

CACHE CONFIGURATION			
Size	Bank 0	Bank 1	TAG
64 KB	(4) 8K x 8	(4) 8K x 8	(1) 8K x 8
128 KB	(4) 32K x 8	NONE	(1) 8K x 8
256 KB	(4) 32K x 8	(4) 32K x 8	(1) 32K x 8

CPU TYPE CONFIGURATION			
CPU Type	JP6	JP7	JP8
80486SX	Open	Open	pins 2 & 3 closed
80487SX	Closed	pins 2 & 3 closed	pins 1 & 2 closed
80486DX	Closed	pins 1 & 2 closed	pins 1 & 2 closed

Continued on next page ...

UNIDENTIFIED

LX400A/G

... continued from previous page

CPU SPEED CONFIGURATION			
CPU speed	S0	S1	S2
25 MHz	Closed	Open	Open
33 MHz	Closed	Closed	Closed
40 MHz	Closed	Closed	Closed
50 MHz	Open	Open	Closed
50iMHz	Closed	Open	Open
60iMHz	Closed	Closed	Closed
Note: The location on the system board of the above jumpers is unidentified.			

VESA WAIT STATE/BUS SPEED CONFIGURATION			
CPU Speed	Wait states	JP24, JP26	JP25, JP27
< 33MHz	0 wait states	pins 1 & 2 closed	pins 1 & 2 closed
> 33MHz	1 wait state	pins 2 & 3 closed	pins 2 & 3 closed

MISCELLANEOUS TECHNICAL NOTE	
Note: Some of the SR jumpers may be hard-wired by the manufacturer, thus some of the cache options may not be available.	