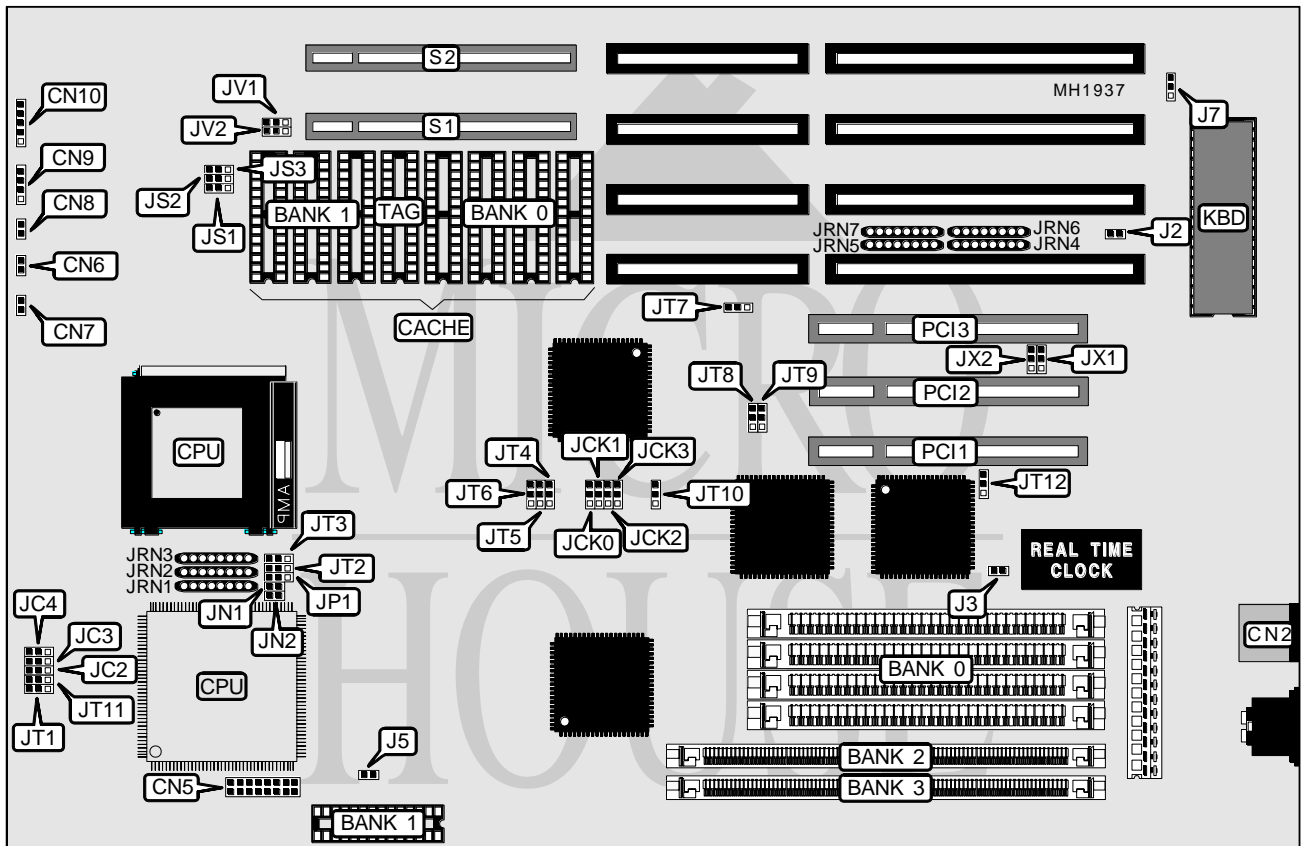


# FIRST INTERNATIONAL COMPUTER, INC. LEO 486-VIP

<b>Processor</b>	80486SX/80486SL/80487SX/CX486DX/80486DX/80486DX2 80486DX4/Pentium Overdrive
<b>Processor Speed</b>	25/33/40/50(internal)/50/66(internal)MHz
<b>Chip Set</b>	VIA
<b>Max. Onboard DRAM</b>	96MB
<b>Cache</b>	64/128/256KB
<b>BIOS</b>	Award
<b>Dimensions</b>	219mm x 271mm
<b>I/O Options</b>	32-bit VESA local bus slots (2), 32-bit PCI slots (3), PS/2 mouse port
<b>NPU Options</b>	None



CONNECTIONS			
Purpose	Location	Purpose	Location
PS/2 mouse port	CN2	Green status LED	J5
3.3V daughter board (80486DX4 only)	CN5	32-bit VESA Local bus slot	S1
Turbo switch	CN6	32-bit VESA Local bus slot	S2
Turbo LED	CN7	32-bit PCI slot	PCI1
Reset switch	CN8	32-bit PCI slot	PCI2
Speaker	CN9	32-bit PCI slot	PCI3
Power LED & keylock	CN10		

Continued next page...

# FIRST INTERNATIONAL COMPUTER, INC.

## LEO 486-VIP

... continued from previous page.

USER CONFIGURABLE SETTINGS		
Function	Jumper	Position
í Monitor type select color	J2	Closed
Monitor type select monochrome/EGA/VGA	J2	Open
í CMOS memory normal operation	J3	Open
CMOS memory clear	J3	Closed
í Normal operation	J7	Open
Password clear	J7	Closed
í CPU select Cyrix DX	JT1	pins 1 & 2 closed
CPU select Cyrix DX2	JT1	pins 2 & 3 closed
í 80486DX4 3X mode	JT2	pins 1 & 2 closed
80486DX4 2X mode	JT2	pins 2 & 3 closed
í Pentium Overdrive internal write-back cache	JT3	pins 1 & 2 closed
Pentium Overdrive internal write-through cache	JT3	pins 2 & 3 closed
í Pentium Overdrive disabled	JT4	pins 1 & 2 closed
Pentium Overdrive enabled	JT4	pins 2 & 3 closed
í Normal operation	JT5	pins 1 & 2 closed
For card that uses A31	JT5	pins 2 & 3 closed
í Address area is programmed in VT82C505	JT6	pins 1 & 2 closed
Supports IRQ15 when SMI# is used	JT6	pins 2 & 3 closed
í Factory configured - do not alter	JT7	pins 1 & 2 closed
í Factory configured - do not alter	JT8	pins 1 & 2 closed
í Factory configured - do not alter	JT9	pins 1 & 2 closed
í Normal operation	JT10	pins 2 & 3 closed
PCI IDE card is installed	JT10	pins 1 & 2 closed
í Factory configured - do not alter	JT11	pins 1 & 2 closed
í Factory configured - do not alter	JX2	pins 2 & 3 closed

Note Jumper JT5 and JT6 cannot be closed at the same time.

DRAM CONFIGURATION			
Size	Bank 0	Bank 1	Bank 2
1MB	(4) 256K x 9	NONE	NONE
1MB	NONE	(1) 256K x 36	NONE
1MB	NONE	NONE	(1) 256K x 36
2MB	(4) 256K x 9	(1) 256K x 36	NONE
2MB	NONE	(1) 256K x 36	(1) 256K x 36
2MB	(4) 256K x 9	NONE	(1) 256K x 36
3MB	(4) 256K x 9	(1) 256K x 36	(1) 256K x 36
4MB	(4) 1M x 9	NONE	NONE
4MB	NONE	(1) 1M x 36	NONE
4MB	NONE	NONE	(1) 1M x 36
5MB	(4) 256K x 9	(1) 1M x 36	NONE
5MB	(4) 256K x 9	NONE	(1) 1M x 36
5MB	(4) 1M x 9	(1) 1M x 36	NONE
5MB	(4) 1M x 9	NONE	(1) 1M x 36
5MB	NONE	(1) 256K x 36	(1) 1M x 36
5MB	NONE	(1) 1M x 36	(1) 256K x 36

*Continued on next page . . .*

FIRST INTERNATIONAL COMPUTER, INC.  
LEO 486-VIP

... continued from previous page.

DRAM CONFIGURATION (continued)			
Size	Bank 0	Bank 1	Bank 2
6MB	(4) 256K x 9	(1) 1M x 36	(1) 256K x 36
6MB	(4) 256K x 9	(1) 256K x 36	(1) 1M x 36
6MB	(4) 256K x 9	(1) 256K x 36	(1) 256K x 36
8MB	(4) 256K x 9	(1) 1M x 36	NONE
8MB	(4) 256K x 9	NONE	(1) 1M x 36
8MB	NONE	(1) 1M x 36	(1) 1M x 36
9MB	(4) 256K x 9	(1) 1M x 36	(1) 1M x 36
9MB	(4) 256K x 9	(1) 256K x 36	(1) 1M x 36
9MB	(4) 256K x 9	(1) 1M x 36	(1) 256K x 36
12MB	(4) 256K x 9	(1) 1M x 36	(1) 1M x 36
16MB	(4) 4M x 9	NONE	NONE
16MB	NONE	(1) 4M x 36	NONE
16MB	NONE	NONE	(1) 4M x 36
17MB	(4) 256K x 9	(1) 4M x 36	NONE
17MB	(4) 256K x 9	NONE	(1) 4M x 36
17MB	NONE	(1) 1M x 36	(1) 4M x 36
17MB	NONE	(1) 4M x 36	(1) 256K x 36
17MB	(4) 4M x 9	(1) 1M x 36	NONE
17MB	(4) 4M x 9	NONE	(1) 256K x 36
18MB	(4) 256K x 9	(1) 256K x 36	(1) 4M x 36
18MB	(4) 256K x 9	(1) 4M x 36	(1) 256K x 36
18MB	(4) 4M x 9	(1) 256K x 36	(1) 256K x 36
20MB	(1) 256K x 36	(1) 4M x 36	NONE
20MB	(4) 1M x 9	NONE	(1) 4M x 36
20MB	(4) 4M x 9	(1) 4M x 36	NONE
20MB	(4) 4M x 9	NONE	(1) 4M x 36
20MB	NONE	(1) 4M x 36	(1) 4M x 36
20MB	NONE	(1) 4M x 36	(1) 4M x 36
21MB	(4) 256K x 9	(1) 4M x 36	(1) 4M x 36
21MB	(4) 256K x 9	(1) 4M x 36	(1) 4M x 36
21MB	(4) 1M x 9	(1) 1M x 36	(1) 4M x 36
21MB	(4) 1M x 9	(1) 4M x 36	(1) 1M x 36
21MB	(4) 4M x 9	(1) 1M x 36	(1) 4M x 36
21MB	(4) 4M x 9	(1) 4M x 36	(1) 1M x 36
24MB	(4) 1M x 9	(1) 4M x 36	(1) 4M x 36
24MB	(4) 1M x 9	(1) 4M x 36	(1) 4M x 36
24MB	(4) 4M x 9	(1) 4M x 36	(1) 4M x 36
32MB	(4) 4M x 9	(1) 4M x 36	NONE
32MB	(4) 4M x 9	NONE	(1) 4M x 36
32MB	NONE	(1) 4M x 36	(1) 4M x 36
32MB	NONE	(1) 4M x 36	NONE
32MB	NONE	NONE	(1) 16M x 36
33MB	(4) 256K x 9	(1) 4M x 36	(1) 4M x 36
33MB	(4) 4M x 9	(1) 1M x 36	(1) 4M x 36
33MB	(4) 4M x 9	(1) 4M x 36	(1) 1M x 36

*Continued on next page . . .*

# FIRST INTERNATIONAL COMPUTER, INC.

## LEO 486-VIP

... continued from previous page.

DRAM CONFIGURATION (continued)			
Size	Bank 0	Bank 1	Bank 2
36MB	(4) 1M x 9	(1) 4M x 36	(1) 4M x 36
36MB	(4) 4M x 9	(1) 1M x 36	(1) 4M x 36
36MB	(4) 4M x 9	(1) 4M x 36	(1) 1M x 36
48MB	(4) 4M x 9	(1) 4M x 36	(1) 4M x 36
64MB	(4) 16M x 9	NONE	NONE
65MB	(4) 16M x 9	(1) 256K x 36	NONE
65MB	(4) 16M x 9	NONE	(1) 1M x 36
66MB	(4) 16M x 9	(1) 256K x 36	(1) 256K x 36
68MB	(4) 16M x 9	(1) 1M x 36	NONE
68MB	(4) 16M x 9	NONE	(1) 1M x 36
69MB	(4) 16M x 9	(1) 256K x 36	(1) 1M x 36
69MB	(4) 16M x 9	(1) 1M x 36	(1) 256K x 36
72MB	(4) 16M x 9	(1) 1M x 36	(1) 1M x 36
80MB	(4) 16M x 9	(1) 4M x 36	NONE
80MB	(4) 16M x 9	NONE	(1) 4M x 36
81MB	(4) 16M x 9	(1) 256K x 36	(1) 4M x 36
81MB	(4) 16M x 9	(1) 16M x 36	(1) 1M x 36
84MB	(4) 16M x 9	(1) 4M x 36	(1) 4M x 36
84MB	(4) 16M x 9	(1) 4M x 36	(1) 4M x 36
96MB	(4) 16M x 9	(1) 4M x 36	(1) 4M x 36

KEYBOARD CONFIGURATION				
Select	JRN4	JRN5	JRN6	JRN7
Internal	Installed	Not installed	Installed	Not installed
External	Not installed	Installed	Not installed	Installed

CACHE CONFIGURATION			
Size	Bank 0	Bank 1	TAG
64KB	(4) 8K x 8	(4) 8K x 8	(1) 8K x 8
128KB	(4) 32K x 8	NONE	(1) 8K x 8
256KB	(4) 32K x 8	(4) 32K x 8	(1) 32K x 8

CACHE JUMPER CONFIGURATION			
Size	JS1	JS2	JS3
64KB	pins 1 & 2 closed	pins 1 & 2 closed	pins 1 & 2 closed
128KB	pins 1 & 2 closed	pins 2 & 3 closed	pins 2 & 3 closed
256KB	pins 2 & 3 closed	pins 2 & 3 closed	pins 1 & 2 closed

Continued on next page . . .

# FIRST INTERNATIONAL COMPUTER, INC.

## LEO 486-VIP

... continued from previous page.

CPU TYPE CONFIGURATION						
Type	JC2	JC3	JC4	JP1	JT12	JX1
80486SX	pins 2 & 3	pins 2 & 3	Open	pins 1 & 2	pins 1 & 2	pins 1 & 2
80487SX	pins 1 & 2	pins 1 & 2	pins 2 & 3	pins 1 & 2	pins 1 & 2	pins 1 & 2
CX486S	pins 2 & 3	pins 2 & 3	Open	pins 2 & 3	pins 2 & 3	pins 2 & 3
Intel SL enhanced	N/A	N/A	N/A	pins 2 & 3	pins 1 & 2	pins 2 & 3
AM486DXL	N/A	N/A	N/A	pins 1 & 2	pins 1 & 2	pins 1 & 2
80486DX	pins 1 & 2	pins 1 & 2	pins 1 & 2	pins 1 & 2	pins 1 & 2	pins 1 & 2
CX486DX	pins 1 & 2	pins 1 & 2	pins 1 & 2	pins 2 & 3	pins 2 & 3	pins 2 & 3
80486DX2	pins 1 & 2	pins 1 & 2	pins 1 & 2	pins 1 & 2	pins 1 & 2	pins 1 & 2
80486DX4	pins 1 & 2	pins 1 & 2	pins 1 & 2	pins 1 & 2	pins 1 & 2	pins 1 & 2
Pentium Overdrive	pins 1 & 2	pins 1 & 2	pins 2 & 3	pins 1 & 2	pins 1 & 2	pins 1 & 2

Note: Pins designated should be in the closed position.

CPU TYPE CONFIGURATION (continued)					
Type	JN1	JN2	JRN1	JRN2	JRN3
80486SX	Open	Open	N/A	N/A	N/A
80487SX	Open	Open	N/A	N/A	N/A
CX486S	Open	Open	Not installed	Not installed	Installed
Intel SL enhanced	Open	Open	Not installed	Installed	Not installed
AM486DXL	Open	Open	Installed	Not installed	Not installed
80486DX	Open	Open	Not installed	Not installed	Not installed
CX486DX	Open	Open	Not installed	Not installed	Installed
80486DX2	Open	Open	Not installed	Not installed	Not installed
80486DX4	Open	Open	Not installed	Installed	Not installed
Pentium Overdrive	Closed	Closed	Not installed	Installed	Not installed

CPU SPEED CONFIGURATION				
Speed	JCK0	JCK1	JCK2	JCK3
25MHz	pins 2 & 3 closed	pins 1 & 2 closed	pins 2 & 3 closed	pins 1 & 2 closed
33MHz	pins 2 & 3 closed	pins 2 & 3 closed	pins 1 & 2 closed	pins 1 & 2 closed
40MHz	pins 1 & 2 closed	pins 1 & 2 closed	pins 2 & 3 closed	pins 1 & 2 closed
50iMHz	pins 2 & 3 closed	pins 1 & 2 closed	pins 2 & 3 closed	pins 1 & 2 closed
50MHz	pins 2 & 3 closed	pins 1 & 2 closed	pins 2 & 3 closed	pins 2 & 3 closed
66iMhz	pins 2 & 3 closed	pins 2 & 3 closed	pins 1 & 2 closed	pins 1 & 2 closed

VESA WAIT STATE/BUS SPEED (ID2 & ID3) CONFIGURATION			
CPU speed	Wait states	JV1	JV2
< 33MHz	0 wait states	pins 1 & 2 closed	pins 1 & 2 closed
> 33MHz	1 wait state	pins 2 & 3 closed	pins 2 & 3 closed