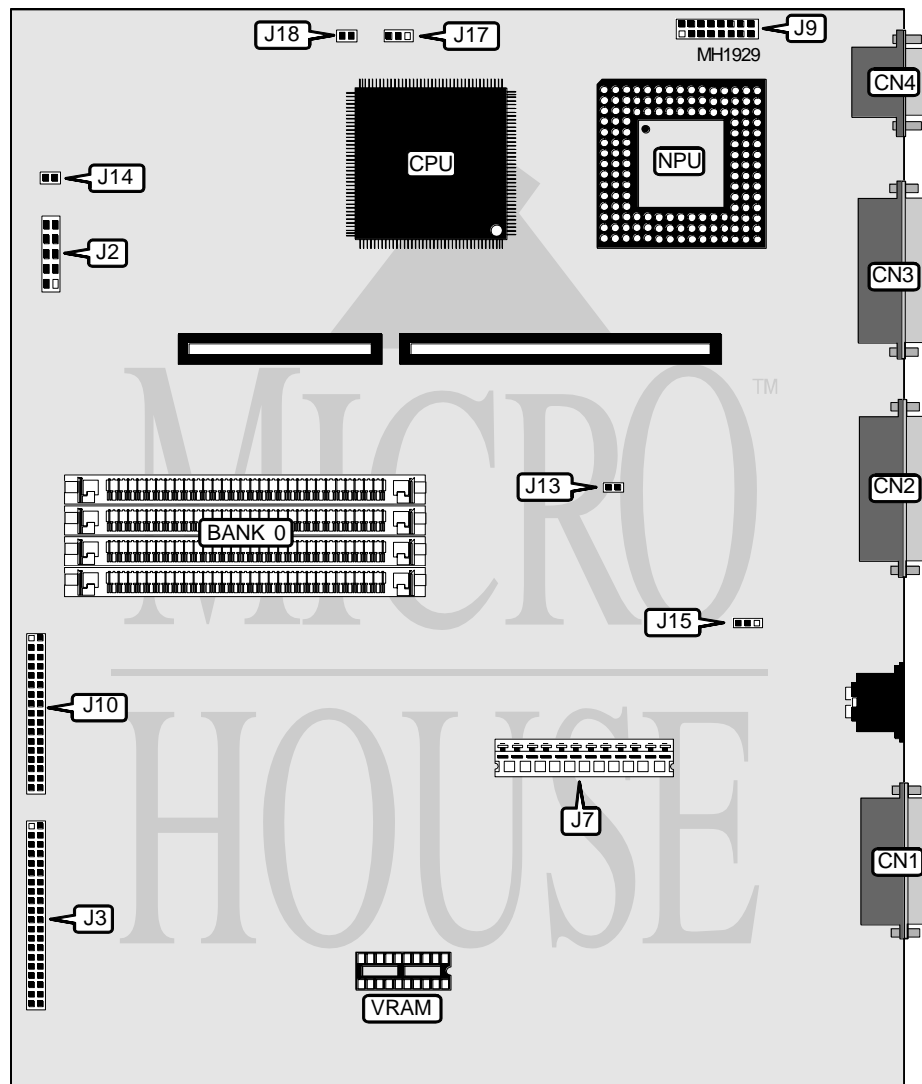


# TULIP COMPUTERS

## TULIP 486 DC/DT (TC38)

<b>Processor</b>	80486SX/80487SX/80486DX/80486DX2
<b>Processor Speed</b>	25/33/50(internal)/66(internal)
<b>Chip Set</b>	Texas Instruments
<b>Max. Onboard DRAM</b>	20MB
<b>Cache</b>	None
<b>BIOS</b>	Phoenix
<b>Dimensions</b>	330mm x 218mm
<b>I/O Options</b>	Floppy drive interface, IDE interface, parallel port, serial ports(2), VGA port
<b>NPU Options</b>	None



Continued next page...

# TULIP COMPUTERS

## 486 DC/DT

... continued from previous page.

CONNECTIONS			
Purpose	Location	Purpose	Location
VGA port	CN1	IDE interface	J3
Parallel port	CN2	DC Power	J7
Serial port 2	CN3	Video Feature Connector	J9
Serial port 1	CN4	Floppy drive interface	J10
LED, Speaker, Batteries	J2	Chassis fan power	J13

USER CONFIGURABLE SETTINGS		
Function	Jumper	Position
í Battery - Rechargeable	J14	Pins 1 & 2 closed
Battery - Non-rechargeable	J14	N/A
í Parallel port (unidirectional)	J15	Pins 1 & 2 closed
Parallel port (bidirectional)	J15	Pins 2 & 3 closed

CPU TYPE CONFIGURATION			
PQFP	PGA	J17	J18
80486SX	None	Pins 2 & 3 closed	N/A
80486SX	80487SX	Pins 2 & 3 closed	N/A
80486SX	Overdrive	Pins 2 & 3 closed	N/A
80486SX	Overdrive R	Pins 2 & 3 closed	Pins 1 & 2 closed
80486DX	None	Pins 2 & 3 closed	N/A
80486DX	Overdrive	Pins 2 & 3 closed	N/A
80486DX	Overdrive R	Pins 2 & 3 closed	Pins 1 & 2 closed
None	80486DX	Pins 2 & 3 closed	None
None	80486DX2	Pins 2 & 3 closed	None
None	Overdrive	Pins 2 & 3 closed	None
None	Overdrive R	Pins 2 & 3 closed	None

DRAM CONFIGURATION		
Expansion from:	Expansion to	Bank 0
4MB	8MB	(4) 1MB x 9
4MB	20MB	(4) 4MB x 9

Note: 4MB is internal memory and is not configurable.

VRAM CONFIGURATION		
Expansion from:	Expansion to	Vram
512KB	1MB	(1) 256K x 16

Note: 512 KB is internal memory and is not configurable.