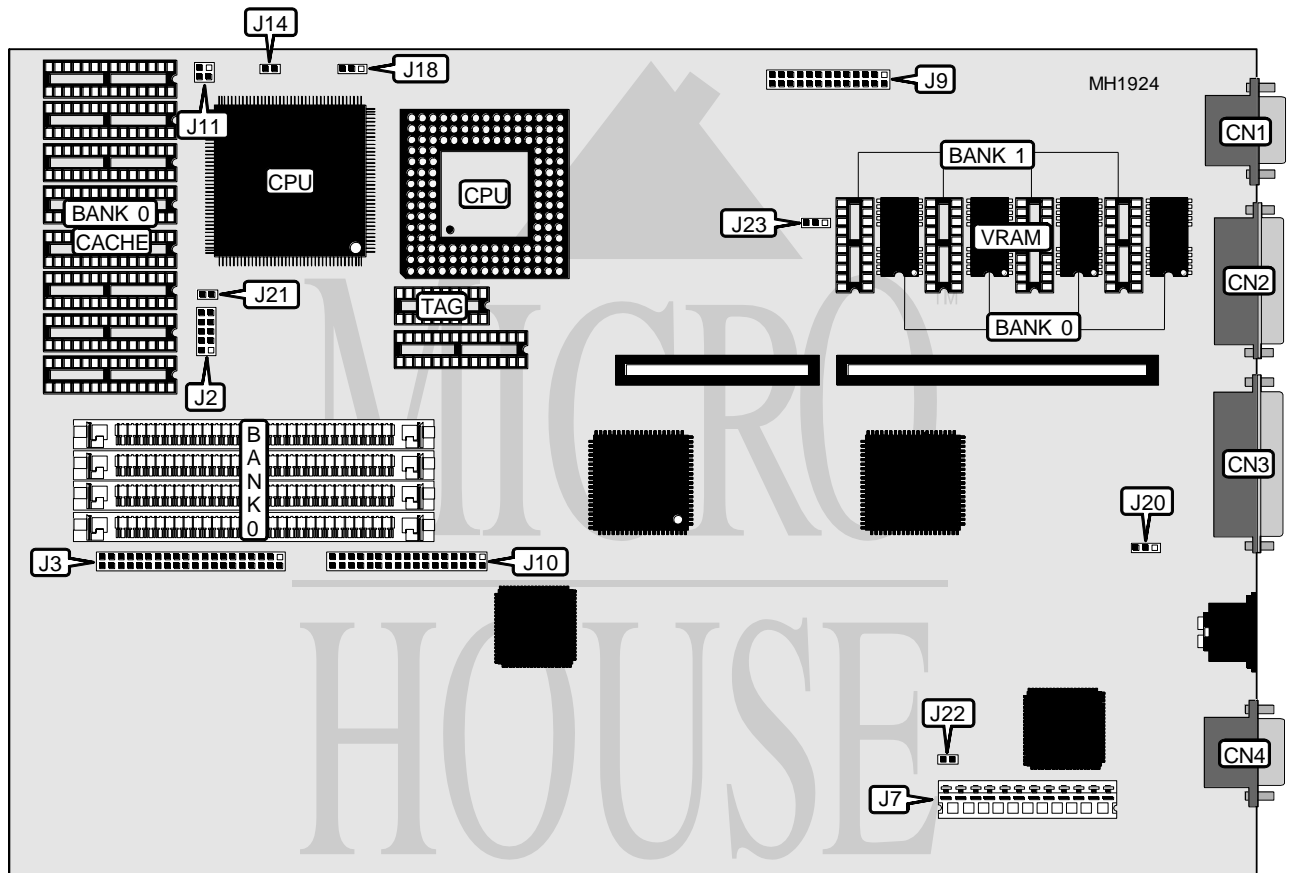


TULIP COMPUTERS

DC/DT 486SX (TC35)

Processor	80486SX/80487SX/80486DX/ODP486SX
Processor Speed	20/40(internal)MHz
Chip Set	Texas Instruments
Max. Onboard DRAM	20MB
Cache	256K
BIOS	Phoenix
Dimensions	330mm x 218mm
I/O Options	Floppy drive interface, IDE interface, parallel port, serial ports(2), VGA feature connector, VGA port
NPU Options	None



CONNECTIONS			
Purpose	Location	Purpose	Location
VGA port	CN1	LED, Speaker, Batteries	J2
Serial port 2	CN2	IDE interface	J3
Parallel port	CN3	VESA feature connector	J9
Serial port 1	CN4	Floppy drive interface	J10

Continued next page...

TULIP COMPUTERS

DC/DT 486SX (TC35)

... continued from previous page.

USER CONFIGURABLE SETTINGS		
Function	Jumper	Position
í Parallel port unidirectional (printer)	J20	Pins 1 & 2 closed
Parallel port bidirectional	J20	Pins 2 & 3 closed
í Battery - Rechargeable	J21	Pins 1 & 2 closed
Battery - Non-rechargeable	J21	N/A
í Factory configured - do not alter	J22	N/A

CPU UPGRADE TYPE CONFIGURATION		
UPGRADE	J14	J18
80487SX	N/A	Pins 2 & 3 closed
80486DX	Pins 1 & 2 closed	Pins 2 & 3 closed
80486DX2	Pins 1 & 2 closed	Pins 2 & 3 closed
ODP486SX	N/A	Pins 2 & 3 closed

CACHE CONFIGURATION			
Size	Bank 0	TAG	J11
64KB	(9) 8K x 8	(1) 64K x 1	N/A
256KB	(9) 32K x 8	(1) 64K x 1	Pins 1 & 2, 3 & 4 closed

DRAM CONFIGURATION		
Expansion from:	Expansion to:	Bank 0
4MB	8MB	(4) 1MB x 9
4MB	20MB	(4) 4MB x 9

Note: 4MB is internal memory and is not configurable.

VRAM CONFIGURATION	
VRAM	J23
512KB	Pins 1 & 2 closed
1024KB	Pins 2 & 3 closed

VRAM CONFIGURATION		
Expansion from:	Expansion to:	VRAM
512KB	1MB	(4) 256K x 4

Note: 512KB is internal memory and is not configurable.