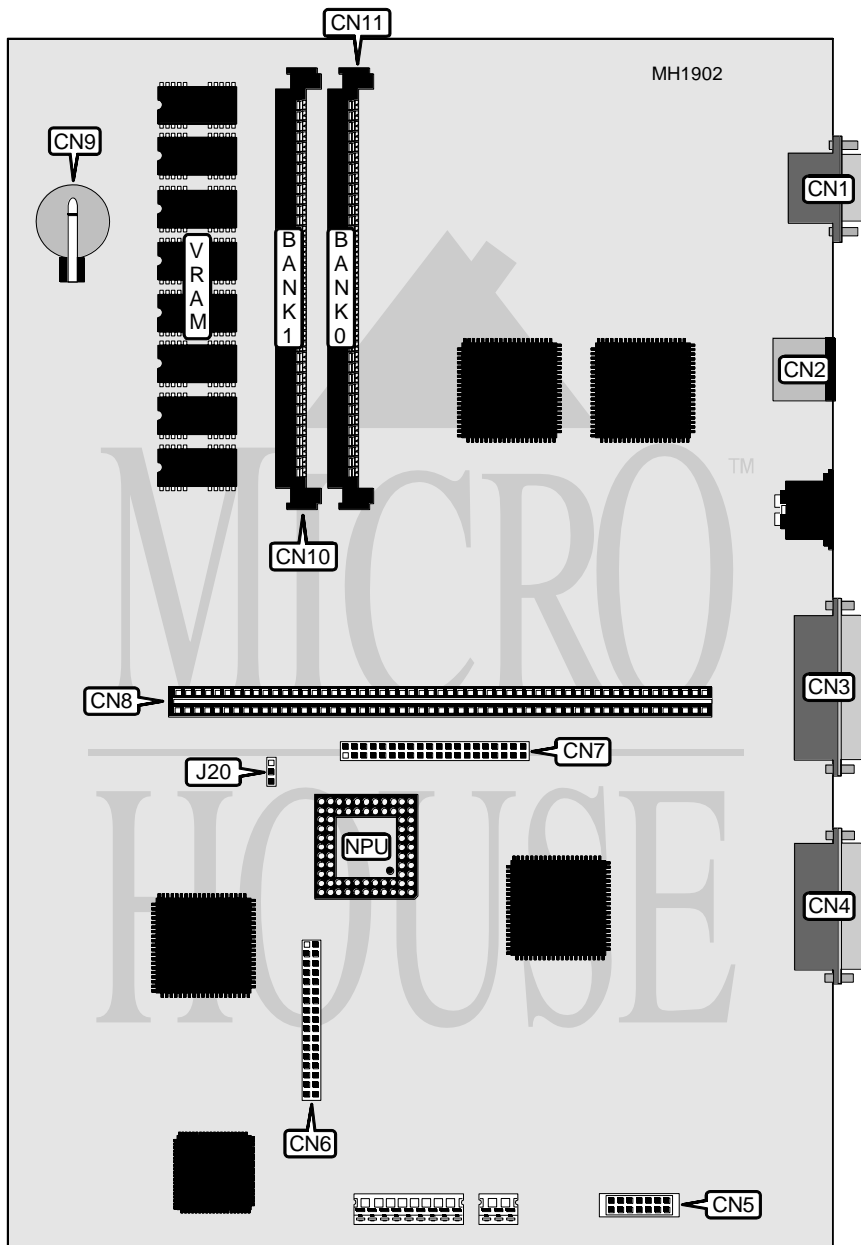


IBM CORPORATION PS/2 MODEL 33

| | |
|--------------------------|--|
| Processor | 80386SX |
| Processor Speed | 33MHz |
| Chip Set | Intel |
| Max. Onboard DRAM | 16MB |
| Cache | None |
| BIOS | IBM |
| Dimensions | 330mm x 218mm |
| I/O Options | Floppy drive interface, hard drive connector, memory module cards (2), parallel port, PS/2 mouse port, riser card, serial port, video port |
| NPU Options | 80387SX |



Continued next page...

IBM CORPORATION

PS/2 MODEL 33

... continued from previous page.

| CONNECTIONS | | | |
|------------------------|----------|-------------------------|----------|
| Purpose | Location | Purpose | Location |
| Video port | CN1 | Hard drive connector | CN7 |
| PS/2 mouse port | CN2 | Riser card slot | CN8 |
| Parallel port | CN3 | Circular battery pack | CN9 |
| Serial port | CN4 | Memory module card slot | CN10 |
| Diagnostic port | CN5 | Memory module card slot | CN11 |
| Floppy drive interface | CN6 | | |

| USER CONFIGURABLE SETTINGS | | |
|--------------------------------|--------|-------------------|
| Function | Jumper | Position |
| í CMOS memory normal operation | J20 | pins 1 & 2 closed |
| CMOS memory clear | J20 | pins 2 & 3 closed |

| DRAM CONFIGURATION | | |
|--------------------|------------|------------|
| Size | Bank 0 | Bank 1 |
| 8MB | (1) 2M x 9 | NONE |
| 16MB | (1) 2M x 9 | (1) 2M x 9 |

| TECHNICAL NOTE |
|--|
| This board comes standard with 1M video memory using (8) 256K x 4 chips. |