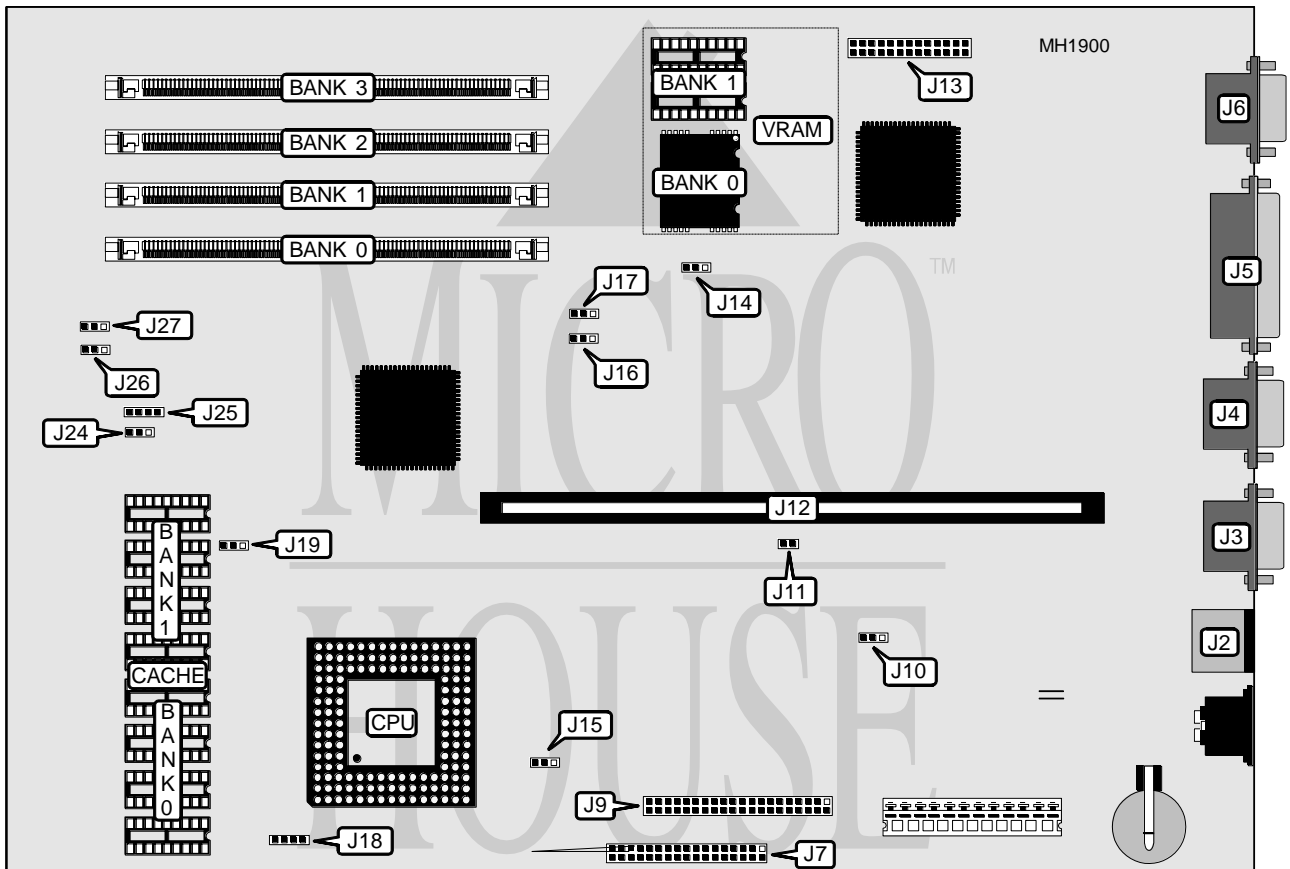


IBM CORPORATION PS/VALUEPOINT 6381 DX/DX2

Processor	80486DX/80486DX2
Processor Speed	33/50(internal)/66(internal)MHz
Chip Set	Intel
Max. Onboard DRAM	64MB
Cache	128/256KB
BIOS	IBM
Dimensions	330mm x 218mm
I/O Options	32-bit riser card slot, floppy drive interface, hard drive interface, parallel port, PS/2 mouse port, serial ports (2), video port
NPU Options	None



CONNECTIONS			
Purpose	Location	Purpose	Location
PS/2 mouse port	J2	Hard drive interface	J9
Serial port 1	J3	Riser Card slot	J12
Serial port 2	J4	VESA feature connector	J13
Parallel port	J5	Power LED & hard drive LED	J18
Video port	J6	Speaker	J25
Floppy drive interface	J7		

Continued next page...

IBM CORPORATION

PS/VALUEPOINT 6381 DX/DX2

... continued from previous page.

USER CONFIGURABLE SETTINGS		
Function	Jumper	Position
í Flash memory enabled	J10	pins 1 & 2 closed
Flash memory disabled	J10	pins 2 & 3 closed
í Mouse port disabled	J11	pins 1 & 2 closed
Mouse port enabled	J11	pins 2 & 3 closed
í Video interrupt disabled	J14	pins 1 & 2 closed
Video interrupt enabled	J14	pins 2 & 3 closed
í Write protect enabled	J15	pins 1 & 2 closed
Write protect disabled	J15	pins 2 & 3 closed
í Video port enabled	J16 & J17	pins 1 & 2 closed
Video port disabled	J16 & J17	pins 2 & 3 closed
í Speaker enabled	J24	pins 1 & 2 closed
Speaker disabled	J24	pins 2 & 3 closed

DRAM CONFIGURATION				
Size	Bank 0	Bank 1	Bank 2	Bank 3
16MB	(1) 2M x 36	(1) 2M x 36	NONE	NONE
32MB	(1) 2M x 36	(1) 2M x 36	(1) 2M x 36	(1) 2M x 36
32MB	(1) 4M x 36	(1) 4M x 36	NONE	NONE
64MB	(1) 4M x 36	(1) 4M x 36	(1) 4M x 36	(1) 4M x 36
64MB	(1) 8M x 36	(1) 8M x 36	NONE	NONE

VIDEO MEMORY CONFIGURATION		
Size	Bank 0	Bank 1
512KB	(2) 512K x 4	None
1MB	(2) 512K x 4	(2) 512K x 4

CACHE CONFIGURATION		
Size	Bank 0	Bank 1
128KB	(4) 64K x 4	None
256KB	(4) 64K x 4	(4) 64K x 4

CACHE JUMPER CONFIGURATION			
Size	J19	J26	J27
128KB	pins 1 & 2 closed	pins 1 & 2 closed	pins 1 & 2 closed
256KB	pins 2 & 3 closed	pins 2 & 3 closed	pins 2 & 3 closed