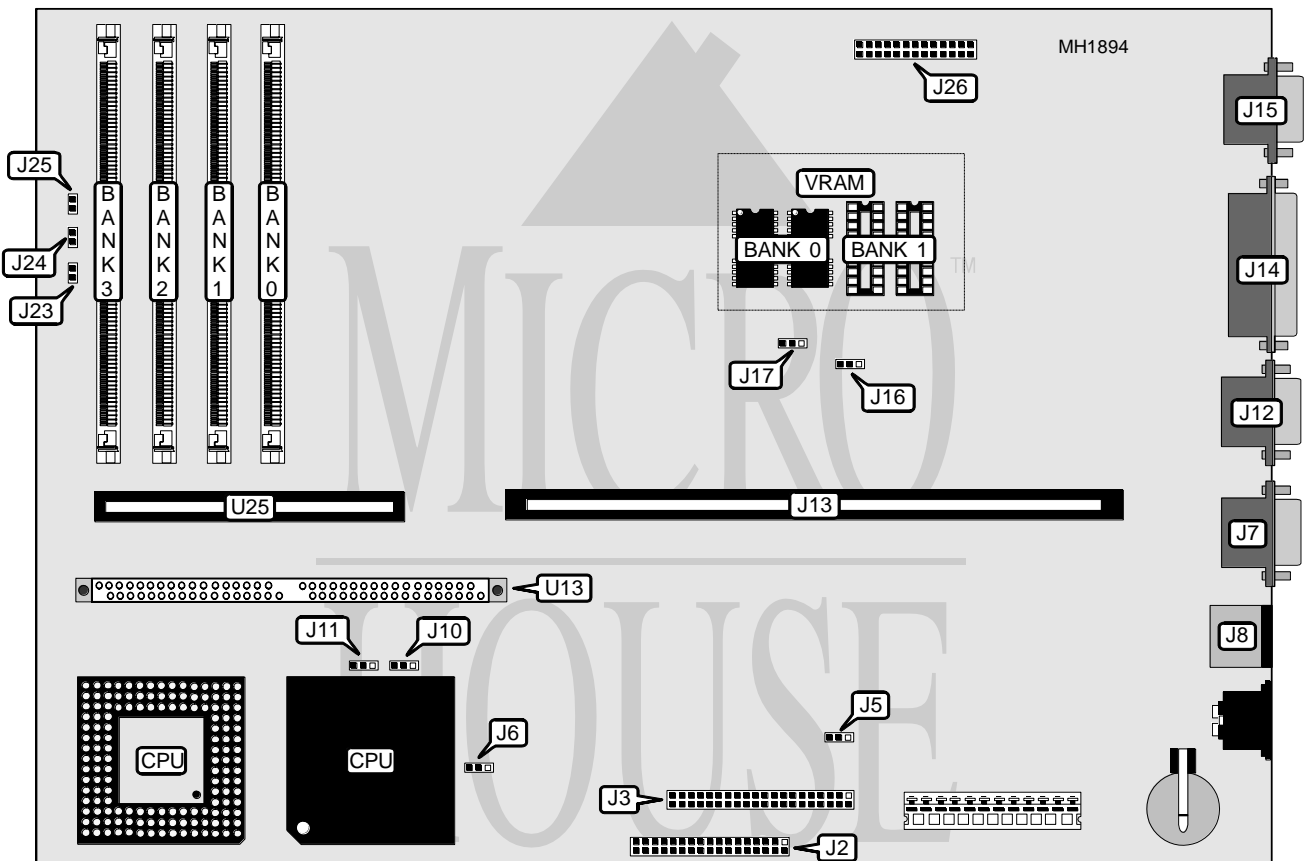


IBM CORPORATION PS/VALUEPOINT 6384/D, 6387/T (TYPE 1)

Processor	80486SX/80486DX/80486DX2
Processor Speed	25/33/50(internal)/66(internal)MHz
Chip Set	Intel
Max. Onboard DRAM	64MB
Cache	128/256KB (located on external cache card)
BIOS	IBM
Dimensions	330mm x 218mm
I/O Options	32-bit riser card slot, external cache card, floppy drive interface, hard drive interface, parallel port, PS/2 mouse port, serial ports (2), video port
NPU Options	None



CONNECTIONS			
Purpose	Location	Purpose	Location
Floppy drive interface	J2	PS/2 mouse port	J8
Hard drive interface	J3	Power LED	J23
Serial port 1	J7	Hard drive LED	J24
Serial port 2	J12	Speaker	J25
Riser card slot	J13	External cache card slot	U13
Parallel port	J14	Riser card extension slot	U25
Video port	J15		

Continued next page...

IBM CORPORATION

PS/2 VALUEPOINT 6384/D, 6387/T (TYPE 1)

... continued from previous page.

USER CONFIGURABLE SETTINGS		
Function	Jumper	Position
í Factory configured - do not alter	J5	pins 1 & 2 closed
í Write protect disabled	J6	pins 1 & 2 closed
Write protect enabled	J6	pins 2 & 3 closed
í Password operation normal	J9	pins 1 & 2 closed
Password clear	J9	pins 2 & 3 closed
í Monochrome adapter not installed	J16	pins 1 & 2 closed
Monochrome adapter installed	J16	pins 2 & 3 closed
í Video port enabled	J17	pins 1 & 2 closed
í Video port disabled	J17	pins 2 & 3 closed

DRAM CONFIGURATION				
Size	Bank 0	Bank 1	Bank 2	Bank 3
16MB	(1) 2M x 36	(1) 2M x 36	NONE	NONE
32MB	(1) 2M x 36	(1) 2M x 36	(1) 2M x 36	(1) 2M x 36
32MB	(1) 4M x 36	(1) 4M x 36	NONE	NONE
64MB	(1) 4M x 36	(1) 4M x 36	(1) 4M x 36	(1) 4M x 36
64MB	(1) 8M x 36	(1) 8M x 36	NONE	NONE

VIDEO MEMORY CONFIGURATION		
Size	Bank 0	Bank 1
1MB	(2) 512K x 8	None
2MB	(2) 512K x 8	(2) 512K x 8

CPU TYPE CONFIGURATION		
Type	J10	J11
80486SX	pins 1 & 2 closed	pins 1 & 2 closed
80486DX	pins 2 & 3 closed	pins 2 & 3 closed
80486DX2	pins 2 & 3 closed	pins 2 & 3 closed

Note: 80486SX is only supported on model 6384/D.