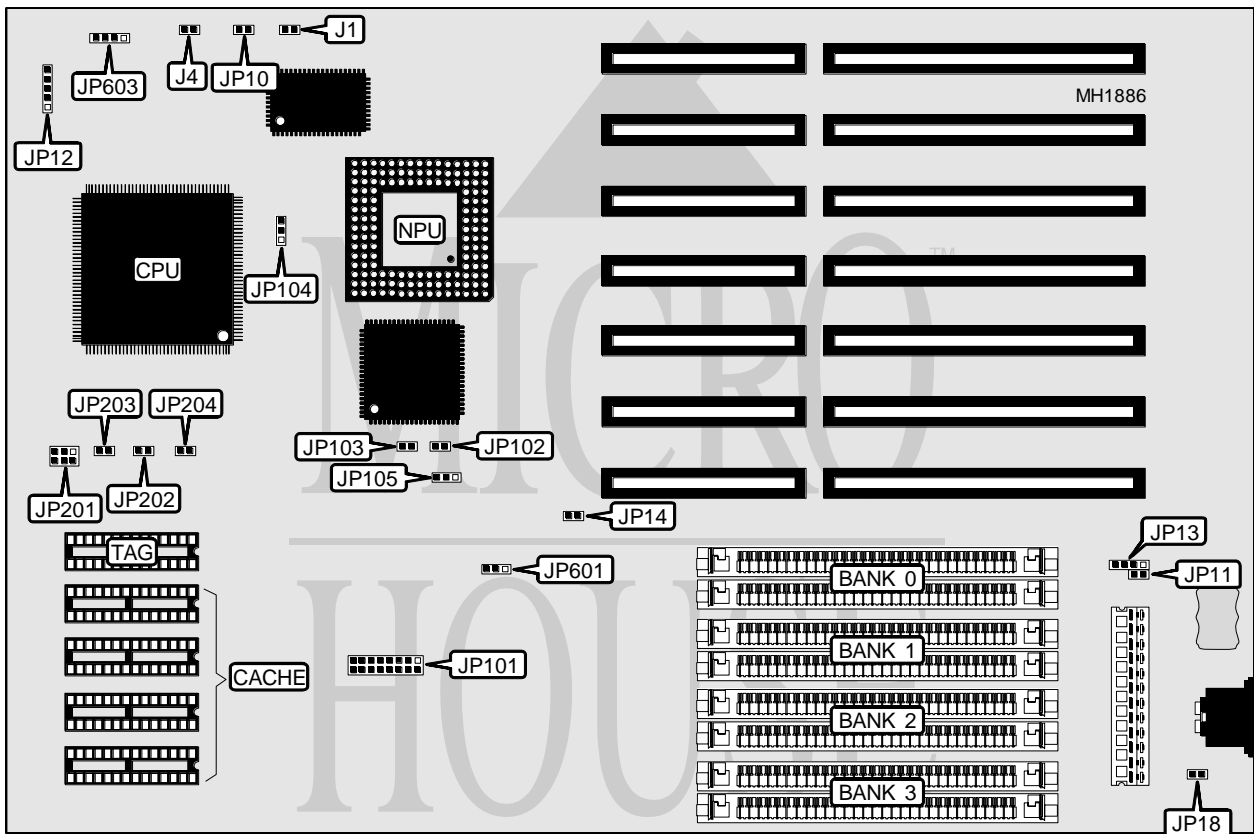


ETEQ MICROSYSTEMS, INC.

IBM 486SLC2

Processor	IBM486SLC2
Processor Speed	50(internal)/66(internal)MHz
Chip Set	ETEQ
Max. Onboard DRAM	16MB
Cache	64/128KB
BIOS	AMI
Dimensions	330mm x 218mm
I/O Options	None
NPU Options	IBM487SLC2



CONNECTIONS			
Purpose	Location	Purpose	Location
Turbo switch	J1	Power LED & keylock	JP12
Reset switch	J4	External battery	JP13
Turbo LED	JP10	Speaker	JP603

Continued next page...

ETEQ MICROSYSTEMS, INC.
IBM 486SLC2

... continued from previous page.

USER CONFIGURABLE SETTINGS		
Function	Jumper	Position
í CMOS memory normal operation	JP11	Closed
CMOS memory clear	JP11	Open
í Factory configured - do not alter	JP14	N/A
í Factory configured - do not alter	JP18	N/A
í Factory configured - do not alter	JP101	N/A
í Factory configured - do not alter	JP102	Closed
í Factory configured - do not alter	JP103	Closed
í Factory configured - do not alter	JP104	pins 2 & 3 closed
í Factory configured - do not alter	JP105	N/A
í Factory configured - do not alter	JP601	N/A

DRAM CONFIGURATION				
Size	Bank 0	Bank 1	Bank 2	Bank 3
512KB	(2) 256K x 9	NONE	NONE	NONE
1MB	(2) 256K x 9	(2) 256K x 9	NONE	NONE
1.5MB	(2) 256K x 9	(2) 256K x 9	(2) 256K x 9	NONE
2MB	(2) 256K x 9	(2) 256K x 9	(2) 256K x 9	(2) 256K x 9
2.5MB	(2) 1M x 9	(2) 256K x 9	NONE	NONE
3MB	(2) 256K x 9	(2) 256K x 9	(2) 1M x 9	NONE
3.5MB	(2) 256K x 9	(2) 256K x 9	(2) 256K x 9	(2) 1M x 9
4MB	(2) 1M x 9	(2) 1M x 9	NONE	NONE
4.5MB	(2) 1M x 9	(2) 1M x 9	(2) 256K x 9	NONE
5MB	(2) 256K x 9	(2) 256K x 9	(2) 1M x 9	(2) 1M x 9
6MB	(2) 1M x 9	(2) 1M x 9	(2) 1M x 9	NONE
6.5MB	(2) 1M x 9	(2) 1M x 9	(2) 1M x 9	(2) 256K x 9
8MB	(2) 1M x 9	(2) 1M x 9	(2) 1M x 9	(2) 1M x 9
8.5MB	(2) 256K x 9	(2) 4M x 9	NONE	NONE
9MB	(2) 256K x 9	(2) 256K x 9	(2) 4M x 9	NONE
9.5MB	(2) 256K x 9	(2) 256K x 9	(2) 256K x 9	(2) 4M x 9
10MB	(2) 1M x 9	(2) 4M x 9	NONE	NONE
10.5MB	(2) 256K x 9	(2) 1M x 9	(2) 4M x 9	NONE
11MB	(2) 256K x 9	(2) 256K x 9	(2) 1M x 9	(2) 4M x 9
12MB	(2) 1M x 9	(2) 1M x 9	(2) 4M x 9	NONE
12.5MB	(2) 256K x 9	(2) 1M x 9	(2) 1M x 9	(2) 4M x 9
14MB	(2) 1M x 9	(2) 1M x 9	(2) 1M x 9	(2) 4M x 9
16MB	(2) 4M x 9	(2) 4M x 9	NONE	NONE

Continued next page...

ETEQ MICROSYSTEMS, INC.
IBM 486SLC2

... continued from previous page.

CACHE CONFIGURATION			
Size	Bank 0	Bank 1	TAG
64KB	(2) 32K x 8	NONE	(1) 8K x 8
128KB	(2) 32K x 8	(2) 32K x 8	(1) 32K x 8

CACHE JUMPER CONFIGURATION				
Size	JP201	JP202	JP203	JP204
64KB	pins 1 & 2 closed	Closed	Closed	Closed
128KB	pins 2 & 4 closed	Closed	Closed	Closed