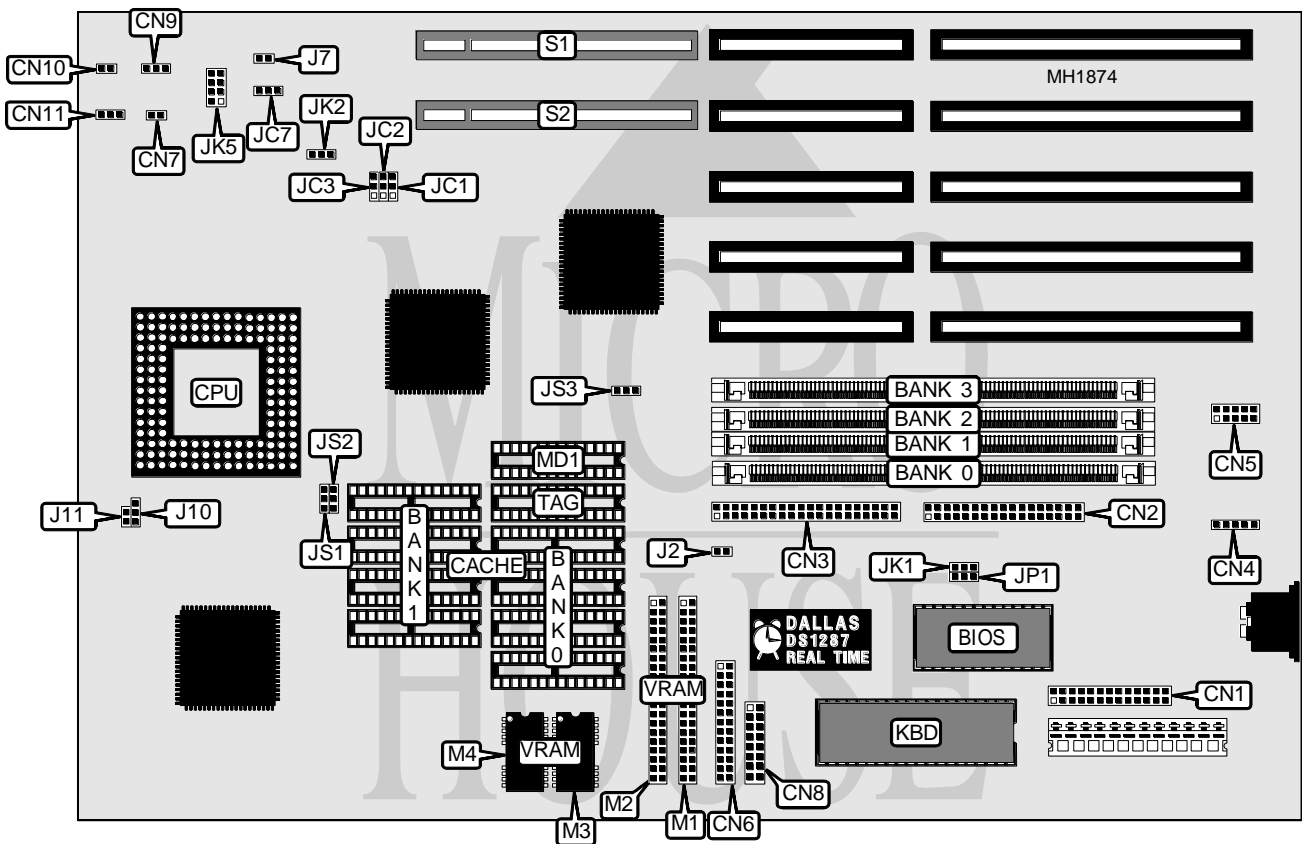


FIRST INTERNATIONAL COMPUTER, INC.

486 VAV (REV. B1)

Processor	80486SX/80487SX/80486DX/80486DX2
Processor Speed	25/33/50(internal)/66(internal)MHz
Chip Set	VIA
Max. Onboard DRAM	64MB
Cache	64/128/256KB
BIOS	AMI/Award
Dimensions	330mm x 218mm
I/O Options	32-bit VESA local bus slots (2), floppy drive interface, IDE interface, parallel port, PS/2 mouse port, serial ports (2), VGA feature connector, VGA port
NPU Options	None



CONNECTIONS			
Purpose	Location	Purpose	Location
Parallel port	CN1	VGA port	CN8
Floppy drive interface	CN2	Chassis fan power	CN9
IDE interface	CN3	IDE interface LED	CN10
PS/2 mouse port	CN4	Power LED & keylock	CN11
Serial port 1 & 2	CN5	Turbo LED	J2
VGA feature connector	CN6	32-bit VESA Local bus slot	S1
Reset switch	CN7	32-bit VESA Local bus slot	S2

Continued next page...

FIRST INTERNATIONAL COMPUTER, INC.
486 VAV (REV. B1)

... continued from previous page.

USER CONFIGURABLE SETTINGS		
Function	Jumper	Position
í Password normal	J7	Open
Password clear	J7	Closed
í Monitor type select color	J10	pins 1 & 2 closed
Monitor type select monochrome	J10	pins 2 & 3 closed
í VGA interrupt enabled	J11	Closed
VGA interrupt disabled	J11	Open
í Factory configured - do not alter	JC7	pins 2 & 3 closed
í Factory configured - do not alter	JP1	pins 1 & 2 closed
í Factory configured - do not alter	JK1	pins 1 & 2 closed
í Factory configured - do not alter	JK2	pins 1 & 2 closed

DRAM CONFIGURATION				
Size	Bank 0	Bank 1	Bank 2	Bank 3
1MB	(1) 1M x 36	NONE	NONE	NONE
2MB	(1) 1M x 36	(1) 1M x 36	NONE	NONE
3MB	(1) 1M x 36	(1) 1M x 36	(1) 1M x 36	NONE
4MB	(1) 4M x 36	(1) 1M x 36	(1) 1M x 36	(1) 1M x 36
4MB	(1) 4M x 36	NONE	NONE	NONE
5MB	(1) 4M x 36	(1) 1M x 36	NONE	NONE
6MB	(1) 4M x 36	(1) 1M x 36	(1) 1M x 36	NONE
7MB	(1) 4M x 36	(1) 1M x 36	(1) 1M x 36	(1) 1M x 36
8MB	(1) 4M x 36	(1) 4M x 36	NONE	NONE
12MB	(1) 4M x 36	(1) 4M x 36	(1) 4M x 36	NONE
16MB	(1) 4M x 36	(1) 4M x 36	(1) 4M x 36	(1) 4M x 36
16MB	(1) 16M x 36	NONE	NONE	NONE
17MB	(1) 16M x 36	(1) 1M x 36	NONE	NONE
18MB	(1) 16M x 36	(1) 1M x 36	(1) 1M x 36	NONE
19MB	(1) 16M x 36	(1) 1M x 36	(1) 1M x 36	(1) 1M x 36
20MB	(1) 16M x 36	(1) 4M x 36	NONE	NONE
21MB	(1) 16M x 36	(1) 4M x 36	(1) 1M x 36	NONE
22MB	(1) 16M x 36	(1) 4M x 36	(1) 1M x 36	(1) 1M x 36
24MB	(1) 16M x 36	(1) 4M x 36	(1) 4M x 36	NONE
28MB	(1) 16M x 36	(1) 4M x 36	(1) 4M x 36	(1) 4M x 36
32MB	(1) 16M x 36	(1) 16M x 36	NONE	NONE
33MB	(1) 16M x 36	(1) 16M x 36	(1) 1M x 36	NONE
36MB	(1) 16M x 36	(1) 16M x 36	(1) 4M x 36	NONE
40MB	(1) 16M x 36	(1) 16M x 36	(1) 4M x 36	(1) 4M x 36
48MB	(1) 16M x 36	(1) 16M x 36	(1) 16M x 36	NONE
64MB	(1) 16M x 36	(1) 16M x 36	(1) 16M x 36	(1) 16M x 36

Continued on next page . . .

FIRST INTERNATIONAL COMPUTER, INC.

486 VAV (REV. B1)

... continued from previous page.

CACHE CONFIGURATION				
Size	Bank 0	Bank 1	TAG	MD1 (Dirty bit)
64KB	(4) 8K x 8	(4) 8K x 8	(1) 8K x 8	(1) 8K x 8
128KB	(4) 32K x 8	NONE	(1) 8K x 8	(1) 8K x 8
256KB	(4) 32K x 8	(4) 32K x 8	(1) 32K x 8	(1) 32K x 8

CACHE JUMPER CONFIGURATION			
Size	JS1	JS2	JS3
64KB	pins 1 & 2 closed	pins 1 & 2 closed	pins 1 & 2 closed
128KB	pins 2 & 3 closed	pins 1 & 2 closed	pins 1 & 2 closed
256KB	pins 2 & 3 closed	pins 2 & 3 closed	pins 2 & 3 closed

VRAM CONFIGURATION				
Size	M1	M2	M3	M4
1MB	N/A	N/A	(1) 256 x 16	(1) 256 x 16
2MB	(1) 256 x 16	(1) 256 x 16	N/A	N/A

Note: M3 & M4 are factory installed and are not configurable.

CPU TYPE CONFIGURATION			
Speed	JC1	JC2	JC3
SX25MHz	pins 2 & 3 closed	pins 2 & 3 closed	pins 2 & 3 closed
DX25MHz	pins 1 & 2 closed	pins 1 & 2 closed	pins 1 & 2 closed
DX33MHz	pins 1 & 2 closed	pins 1 & 2 closed	pins 1 & 2 closed
DX50iMHz	pins 1 & 2 closed	pins 1 & 2 closed	pins 2 & 3 closed
DX50MHz	pins 1 & 2 closed	pins 1 & 2 closed	pins 1 & 2 closed
DX66MHz	pins 1 & 2 closed	pins 1 & 2 closed	pins 1 & 2 closed

CPU TYPE CONFIGURATION - JK5				
Setting	Pins 1 & 2	Pins 3 & 4	Pins 5 & 6	Pins 7 & 8
25MHz	Open	Closed	Open	Open
33MHz	Closed	Open	Open	Closed
50iMHz	Open	Closed	Open	Open
66iMHz	Closed	Open	Open	Closed