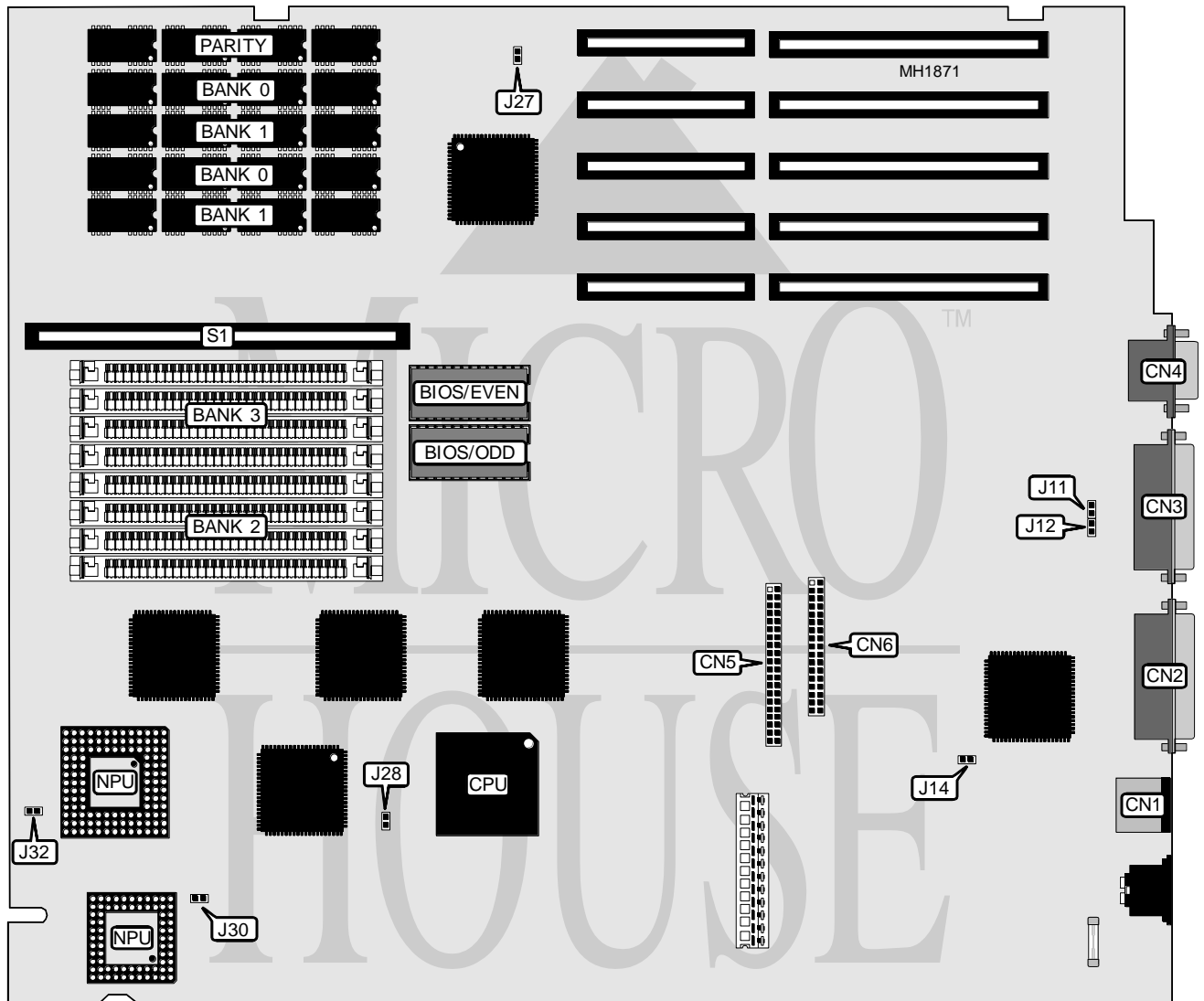


OLIVETTI M 2 8 6 / 2 5

Processor	80386DX
Processor Speed	25MHz
Chip Set	C & T
Max. Onboard DRAM	10MB
Cache	32KB
BIOS	Olivetti
Dimensions	355mm x 304mm
I/O Options	32-bit external memory card
NPU Options	80387DX/3167



Continued next page...

OLIVETTI

M 2 8 6 / 2 5

... continued from previous page.

CONNECTIONS			
Purpose	Location	Purpose	Location
PS/2 mouse port	CN1	IDE interface	CN5
Parallel port	CN2	Floppy drive interface	CN6
Serial port	CN3	32-bit external memory card	S1
Video port	CN4		

USER CONFIGURABLE SETTINGS		
Function	Jumper/Switch	Position
í Normal operation	J11, J12	Closed
Indicates the level from the RS232 threshold	J11, J12	Open
í Factory configured - do not alter	J14	Closed
í CMOS memory normal operation	J27	Open
CMOS memory clear	J27	Open
í Cache controller select 82385	J28	Open
Cache controller select other	J28	Closed
í NPU synchronous with CPU	J30	Open
NPU asynchronous	J30	Closed
í BIOS enabled	J32	Open
BIOS disabled	J32	Closed

DRAM CONFIGURATION			
Size	Bank 0	Bank 1	Bank 2
2MB	(8) 44256	None	None
3MB	(8) 44256	(4) 256K x 9	None
4MB	(8) 44256	(4) 256K x 9	(4) 256K x 9
6MB	(8) 44256	(4) 1M x 9	None
10MB	(8) 44256	(4) 1M x 9	(4) 1M x 9