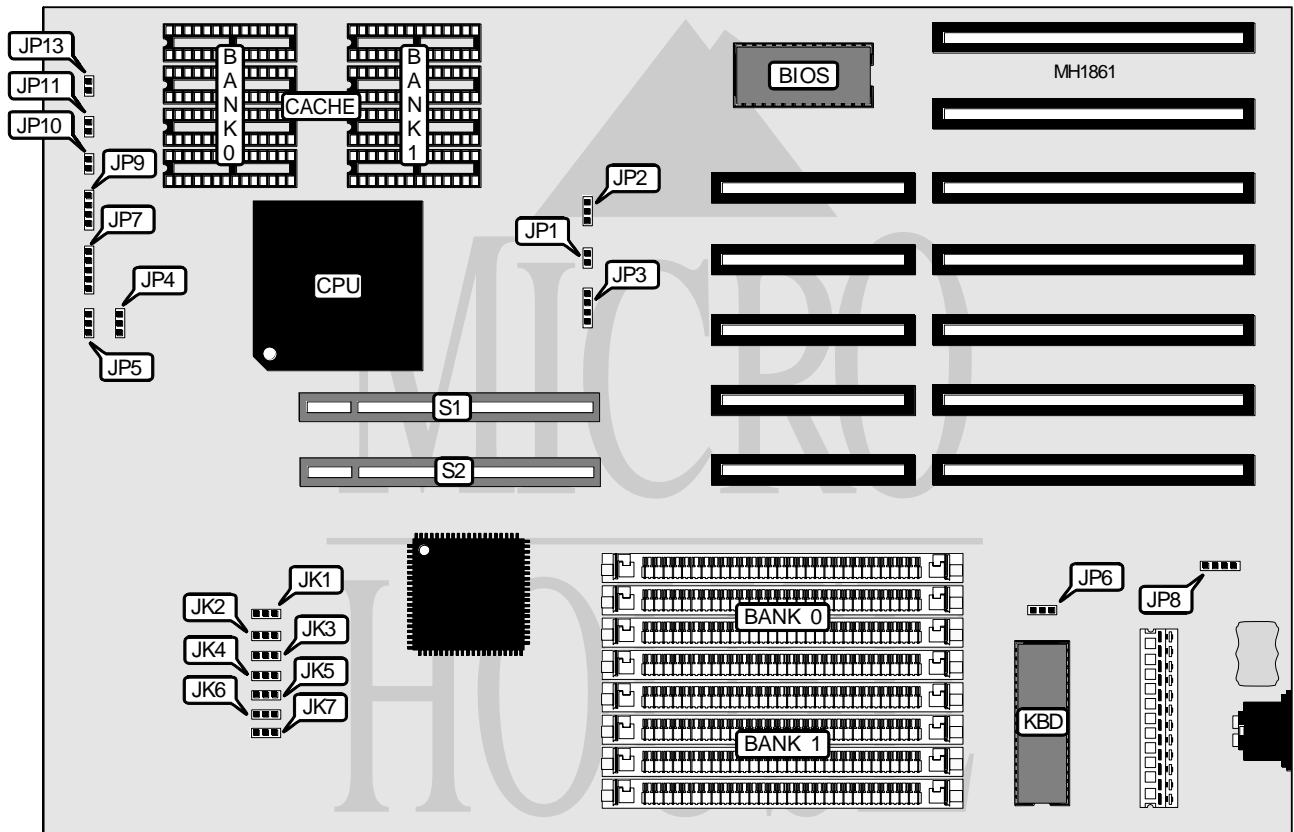


PC WARE INTERNATIONAL, INC.

AT - 168

Processor 80486SX/80487SX/80486DX
Processor Speed 25/33/50MHz
Chip Set ACC
Max. Onboard DRAM 32MB
Cache 32/64/128/256/512/1024KB
BIOS AMI/Award/Phoenix
Dimensions 330mm x 218mm
I/O Options 32-bit VESA local bus slots (2)
NPU Options None



CONNECTIONS			
Purpose	Location	Purpose	Location
Power LED & keylock	JP7	Reset switch	JP11
External battery	JP8	Turbo LED	JP13
Speaker	JP9	32-bit VESA local bus slot	S1
Turbo switch	JP10	32-bit VESA local bus slot	S2

Continued on next page. . .

PC WARE INTERNATIONAL, INC.
AT-168

...continued from previous page

USER CONFIGURABLE SETTINGS		
Function	Jumper	Position
486 cache enabled	JP1	Closed
486 cache disabled	JP1	Open
Factory configured-do not alter	JP4	Closed
Factory configured-do not alter	JP5	Closed
Monitor type select monochrome	JP6	pins 1 & 2 closed
Monitor type select color	JP6	pins 2 & 3 closed

CPU TYPE SELECT		
Type	JP2	JP3
80486SX	pins 2 & 3 closed	pins 2 & 3 closed
80487SX	pins 1 & 2 closed	pins 1 & 2, 3 & 4 closed
80486DX	pins 3 & 4 closed	pins 1 & 2, 3 & 4 closed

DRAM CONFIGURATION		
Size	Bank 0	Bank 1
1MB	(4) 256K x 9	NONE
2MB	(4) 256K x 9	(4) 256K x 9
4MB	(4) 1M x 9	NONE
5MB	(4) 256K x 9	(4) 1M x 9
8MB	(4) 1M x 9	(4) 1M x 9
16MB	(4) 4M x 9	NONE
20MB	(4) 1M x 9	(4) 4M x 9
32MB	(4) 4M x 9	(4) 4M x 9

CACHE CONFIGURATION							
Size	JK1	JK2	JK3	JK4	JK5	JK6	JK7
32K	pins 1 & 2	pins 1 & 2	pins 1 & 2	pins 1 & 2	pins 1 & 2	pins 1 & 2	pins 1 & 2
64K	pins 1 & 2	pins 2 & 3	pins 1 & 2	pins 2 & 3	pins 2 & 3	pins 1 & 2	pins 1 & 2
128K	pins 2 & 3	pins 1 & 2	pins 1 & 2	pins 1 & 2	pins 2 & 3	pins 2 & 3	pins 1 & 2
256K	pins 2 & 3	pins 2 & 3	pins 2 & 3	pins 2 & 3	pins 2 & 3	pins 2 & 3	pins 2 & 3

Note: Pins designated should be in the closed position.