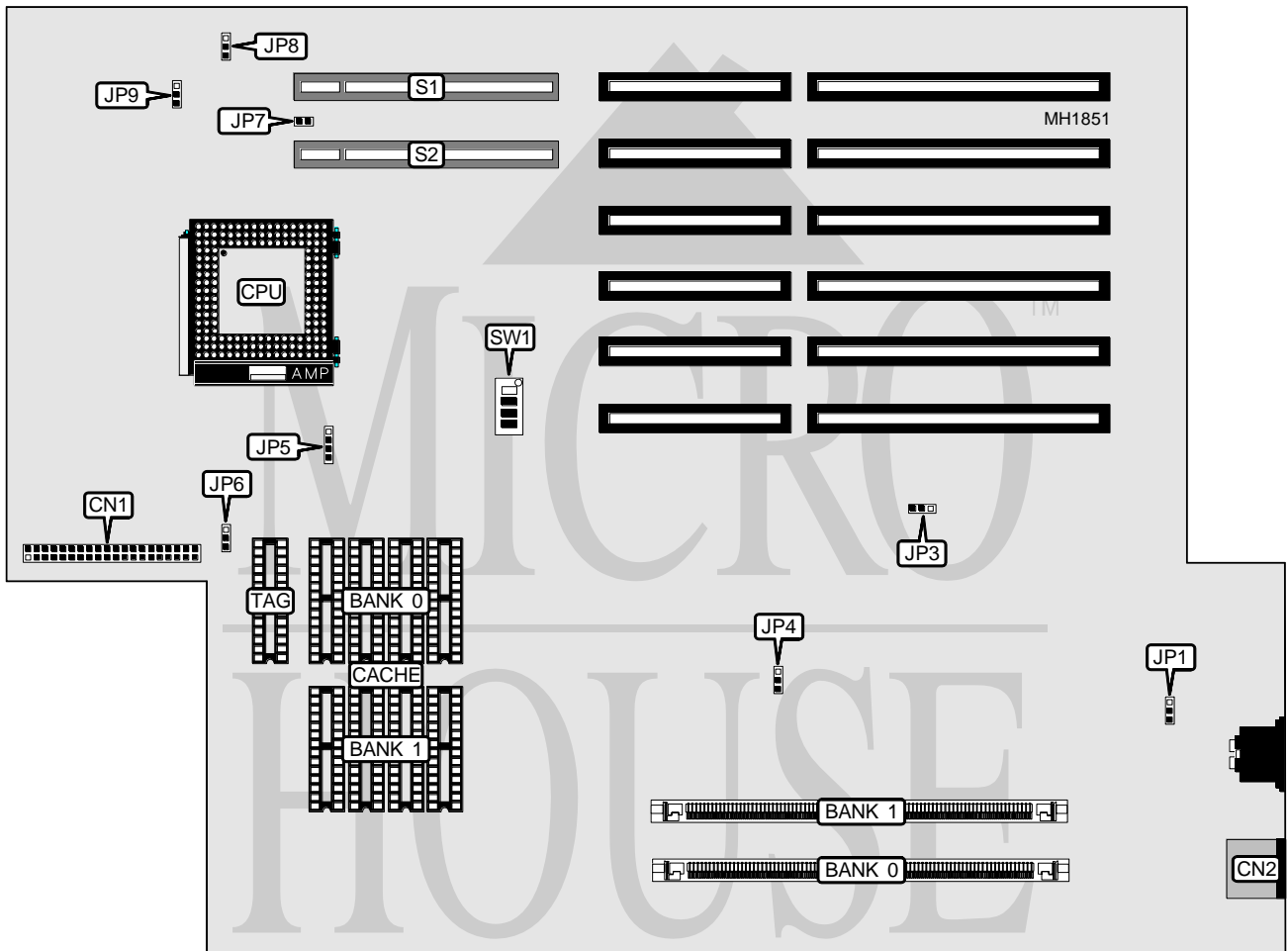


LEADING EDGE PRODUCTS, INC. WINTOWER 486PC

Processor	80486SX/80486DX/80486DX2
Processor Speed	25/33/50(internal)/66(internal)MHz
Chip Set	UMC
Max. Onboard DRAM	64MB
Cache	64/128/256KB
BIOS	Phoenix
Dimensions	355mm x 304mm
I/O Options	32-bit VESA local bus slots (2), IDE interface, PS/2 mouse port
NPU Options	None



CONNECTIONS			
Purpose	Location	Purpose	Location
IDE interface	CN1	32-bit VESA Local bus slot	S1
PS/2 mouse style	CN2	32-bit VESA Local bus slot	S2

Continued next page...

LEADING EDGE PRODUCTS, INC.

WINTOWER 486PC

... continued from previous page.

USER CONFIGURABLE SETTINGS		
Function	Jumper	Position
í Factory configured - do not alter	JP1	N/A
í Factory configured - do not alter	JP6	N/A
í Parallel port interrupt select IRQ7	JP3	pins 1 & 2 closed
Parallel port interrupt select IRQ5	JP3	pins 2 & 3 closed
í CMOS memory normal operation	JP4	pins 1 & 2 closed
CMOS memory clear	JP4	pins 2 & 3 closed

DRAM CONFIGURATION		
Size	Bank 0	Bank 1
4MB	(1) 1M x 36	NONE
8MB	(1) 1M x 36	(1) 1M x 36
12MB	(1) 2M x 36	(1) 1M x 36
16MB	(1) 2M x 36	NONE
16MB	(1) 2M x 36	(1) 2M x 36
16MB	(1) 4M x 36	NONE
20MB	(1) 4M x 36	NONE
32MB	(1) 4M x 36	(1) 4M x 36
32MB	(1) 8M x 36	NONE
36MB	(1) 1M x 36	(1) 8M x 36
64MB	(1) 8M x 36	(1) 8M x 36

CACHE CONFIGURATION			
Size	Bank 0	Bank 1	TAG
64KB	(4) 8K x 8	(4) 8K x 8	(1) 8K x 8
128KB	(4) 32K x 8	NONE	(1) 8K x 8
256KB	(4) 32K x 8	(4) 32K x 8	(1) 32K x 8

CACHE JUMPER CONFIGURATION				
Size	SW1/switch 1	SW1/switch 2	SW1/switch 3	SW1/switch 4
64KB	Off	Off	Off	Off
128KB	Off	On	Off	On
256KB	On	On	On	Off

CPU TYPE CONFIGURATION	
Type	JP5
80486SX	pins 2 & 3 closed
80486DX	pins 1 & 2 and 3 & 4 closed
ODP486SX	pins 1 & 2 and 3 & 4 closed
80486DX2	pins 1 & 2 and 3 & 4 closed

Continued next page...

LEADING EDGE PRODUCTS, INC.
WINTOWER 486PC

... continued from previous page.

CPU SPEED CONFIGURATION		
Speed	JP8	JP9
25MHz	pins 1 & 2 closed	pins 1 & 2 closed
33MHz	pins 2 & 3 closed	pins 2 & 3 closed
50MHz	pins 1 & 2 closed	pins 1 & 2 closed
66MHz	pins 2 & 3 closed	pins 2 & 3 closed

VESA WAIT STATE/BUS SPEED CONFIGURATION		
CPU speed	Wait states	JP7
≤ 33MHz	0 wait states	Open
> 33MHz	1 wait state	Closed