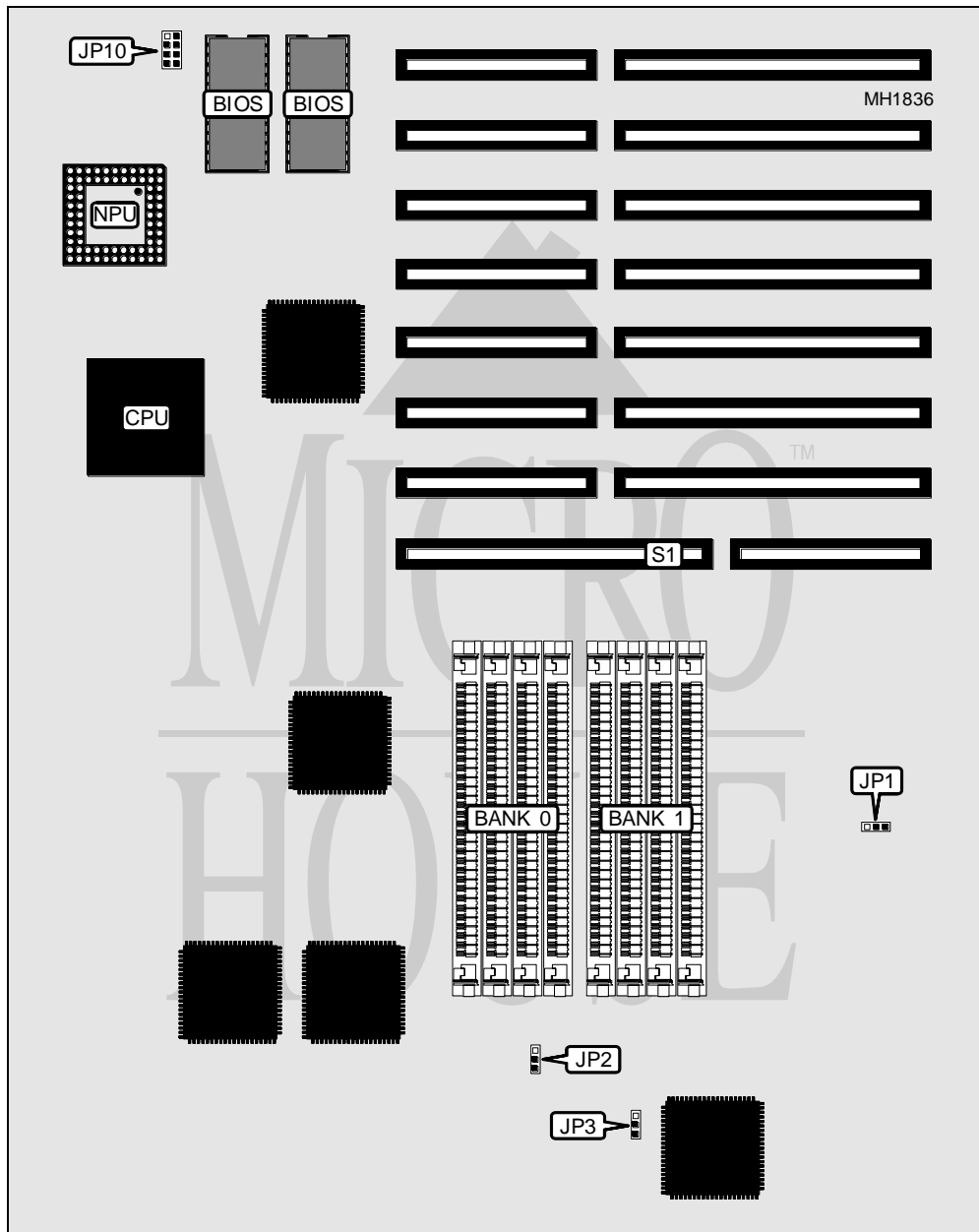


LEADING EDGE PRODUCTS, INC. MODEL D3/25

Processor	80386DX
Processor Speed	25MHz
Chip Set	Unknown
Max. Onboard DRAM	8MB
Cache	32KB
BIOS	Phoenix
Dimensions	330mm x 218mm
I/O Options	16-bit external memory card slot, bus mouse port, floppy drive interface (2), IDE interface, parallel port, serial ports (2)
NPU Options	80387DX



Continued next page...

LEADING EDGE PRODUCTS, INC.

MODEL D3/25

... continued from previous page.

CONNECTIONS			
Purpose	Location	Purpose	Location
Bus mouse port	J11	Reset switch/LED	JP7
Serial port 1	J12	Keylock	JP8
Serial port 2	J13	Floppy drive interface	J23
Parallel port	J14	Floppy drive interface	J24
Speaker	J15	16-bit external memory card slot	S1

Note: The exact locations of J11 - J15, JP7, JP8, JP23 and JP24 are unknown.

USER CONFIGURABLE SETTINGS		
Function	Jumper	Position
í Monitor type select monochrome	J1	pins 2 & 3 closed
Monitor type select color	J1	pins 1 & 2 closed
í Floppy drive interface enabled	J3	Closed
Floppy drive interface disabled	J3	Open
í NPU disabled	J10	pins 7 & 8 closed
NPU enabled	J10	pins 5 & 6 closed
í Bus mouse port enabled	JPA	Closed
Bus mouse port disabled	JPA	Open
í Factory configured - do not alter	JP1	N/A
í Factory configured - do not alter	JP2	N/A
í Factory configured - do not alter	JP3	N/A
í Factory configured - do not alter	JP11	Open
í Factory configured - do not alter	JP12	Closed
í Factory configured - do not alter	JP13	Closed
í Factory configured - do not alter	JP14	Closed

Note: The exact locations of J1, J3, J10, JPA, JP12, JP13, and JP14 are unknown.

DRAM CONFIGURATION		
Size	Bank 0	Bank 1
4MB	(4) 1M x 9	NONE
8MB	(4) 1M x 9	(4) 1M x 9
16MB	(4) 4M x 9	NONE

Note: The exact locations of Bank 0 and Bank 1 are unknown.

EXTERNAL MEMORY CONFIGURATION		
Size	JP10/pins 1 & 2	JP10/pins 3 & 4
4MB	Closed	Open
8MB	Open	Closed
16MB	Closed	Closed

BUS MOUSE IRQ INTERRUPT SELECT	
IRQ	J2
í IRQ5	pins 1 & 5 closed
IRQ3	pins 2 & 6 closed
IRQ4	pins 3 & 7 closed
IRQ9	pins 4 & 8 closed

Note: The exact location of J2 is unknown.

