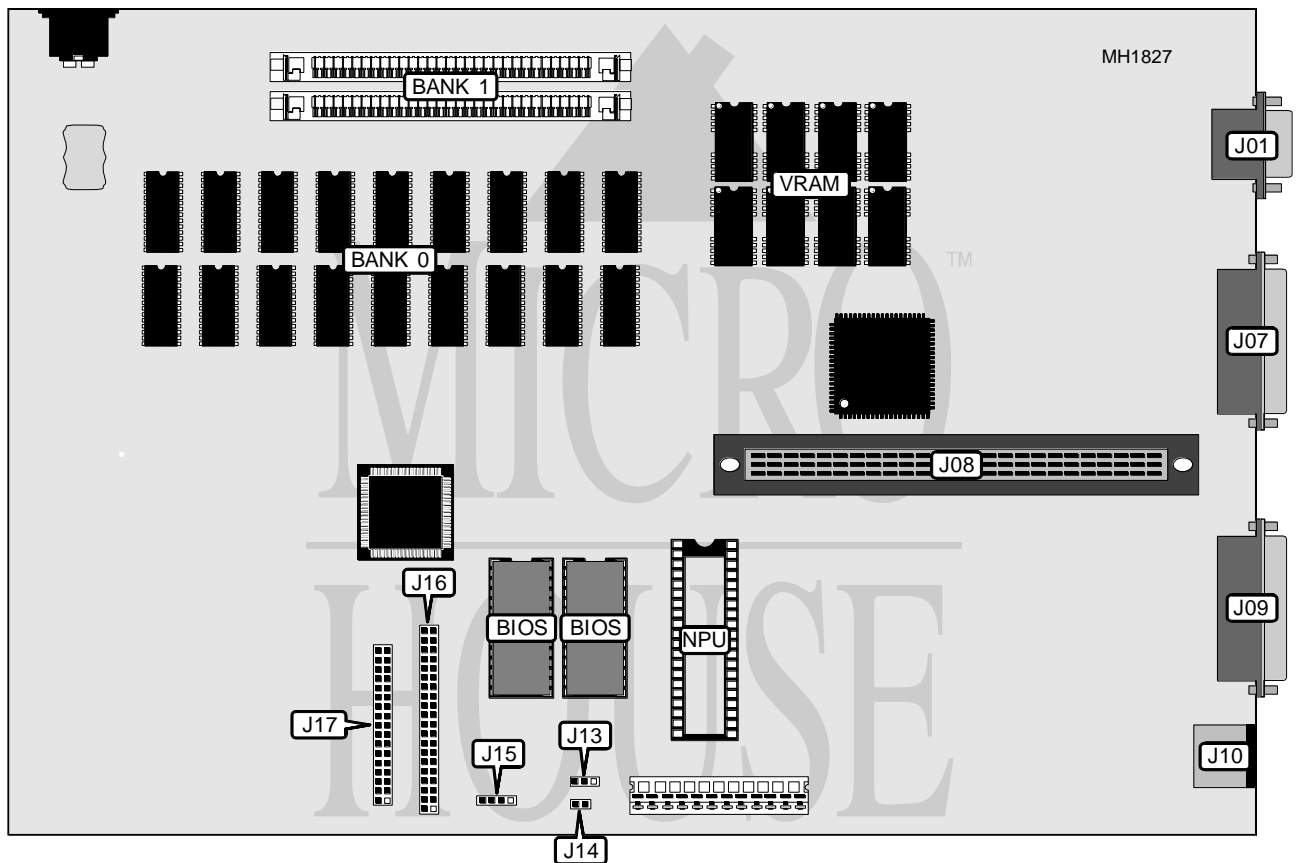


# LEADING EDGE PRODUCTS, INC.

## MODEL D/86

<b>Processor</b>	8088
<b>Processor Speed</b>	8/10MHz
<b>Chip Set</b>	Unknown
<b>Max. Onboard DRAM</b>	2.5MB
<b>Cache</b>	None
<b>BIOS</b>	Unknown
<b>Dimensions</b>	330mm x 218mm
<b>I/O Options</b>	Floppy drive interface, IDE interface, parallel port, bus mouse port, serial port, VGA port
<b>NPU Options</b>	8087



CONNECTIONS			
Purpose	Location	Purpose	Location
VGA port	J01	Bus mouse port	J10
Serial port 1	J07	IDE interface	J16
Horizontal expansion slot	J08	Floppy drive interface	J17
Parallel port	J09		

*Continued next page...*

# LEADING EDGE PRODUCTS, INC.

## MODEL D/86

... continued from previous page.

USER CONFIGURABLE SETTINGS		
Function	Jumper	Position
í Factory configured - do not alter	J13	N/A
í Factory configured - do not alter	J14	N/A
í Factory configured - do not alter	J15	N/A

DRAM CONFIGURATION		
Size	Bank 0	Bank 1
512KB	(18) 4464	NONE
640KB	(18) 4464	(2) 64K x 9
1MB	(18) 4464	(2) 256K x 9
2.5MB	(18) 4464	(2) 1M x 9