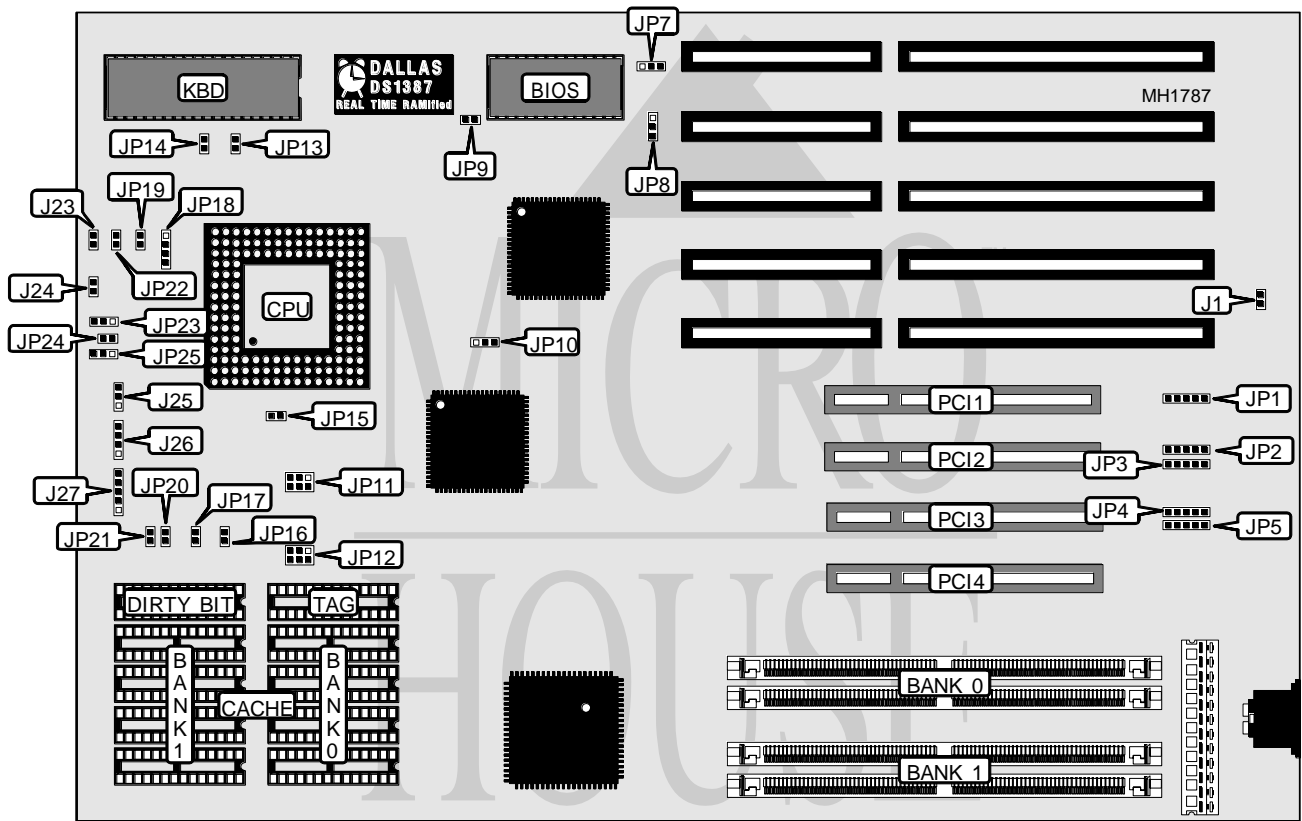


# LION COMPUTERS, INC. NICE GREEN 486/PCI

**Processor** 80486SX/80487SX/80486DX/ODP486SX/80486DX2/Pentium Overdrive  
**Processor Speed** 25/33/50(internal)/66(internal)MHz  
**Chip Set** Intel  
**Max. Onboard DRAM** 128MB  
**Cache** 64/128/256/512KB  
**BIOS** AMI  
**Dimensions** 330mm x 218mm  
**I/O Options** 32-bit PCI local bus slots (4)  
**NPU Options** None



CONNECTIONS			
Purpose	Location	Purpose	Location
Green PC	J1	Power LED & keylock	J27
Turbo switch	J23	32-bit PCI local bus slot	PCI1
Turbo LED	J24	32-bit PCI local bus slot	PCI2
Reset switch	J25	32-bit PCI local bus slot	PCI3
Speaker	J26	32-bit PCI local bus slot	PCI4

Continued next page...

# LION COMPUTERS, INC.

## NICE GREEN 486/PCI

... continued from previous page.

USER CONFIGURABLE SETTINGS		
Function	Jumper	Position
í Green PC normal operation	JP13	Open
Green PC sleep mode	JP13	Closed
í CMOS memory normal operation	JP14	Open
CMOS memory clear	JP14	Closed
í Cache disabled	JP20	Closed
Cache enabled	JP20	Open
í Factory configured - do not alter	JP21	Closed
í Factory configured - do not alter	JP24	Closed

DRAM CONFIGURATION		
Size	Bank 0	Bank 1
8MB	(2) 1M x 36	NONE
16MB	(2) 1M x 36	(2) 1M x 36
16MB	(2) 2M x 36	NONE
32MB	(2) 2M x 36	(2) 2M x 36
32MB	(2) 4M x 36	NONE
40MB	(2) 1M x 36	(2) 4M x 36
64MB	(2) 4M x 36	(2) 4M x 36
48MB	(2) 2M x 36	(2) 4M x 36
128MB	(2) 16M x 36	NONE

CACHE CONFIGURATION				
Size	Bank 0	Bank 1	TAG	Dirty Bit
64KB	(4) 8K x 8	(4) 8K x 8	(1) 8K x 8	(1) 64K x 1
128KB	(4) 32K x 8	NONE	(1) 32K x 8	(1) 64K x 1
256KB	(4) 32K x 8	(4) 32K x 8	(1) 32K x 8	(1) 64K x 1
512KB	(4) 128K x 8	NONE	(1) 32K x 8	(1) 64K x 1

CACHE JUMPER CONFIGURATION				
Size	JP11	JP12	JP16	JP17
64KB	Open	Open	Closed	Closed
128KB	pins 1 & 2 closed	pins 1 & 2 closed	Closed	Open
256KB	pins 3 & 4 closed	pins 3 & 4 closed	Open	Closed
512KB	pins 2 & 3 closed	pins 2 & 3 closed	Open	Open

CPU TYPE CONFIGURATION					
Type	JP10	JP15	JP18	JP23	JP25
80486SX	pins 1 & 2	Closed	pins 2 & 3	pins 2 & 3	pins 1 & 2
80487SX	pins 1 & 2	Closed	1 & 2 and 3 & 4	pins 1 & 2	pins 1 & 2
80486DX	pins 1 & 2	Closed	1 & 2 and 3 & 4	pins 2 & 3	pins 2 & 3
ODP486SX	pins 1 & 2	Closed	1 & 2 and 3 & 4	pins 1 & 2	pins 1 & 2
80486DX2	pins 1 & 2	Closed	1 & 2 and 3 & 4	pins 2 & 3	pins 2 & 3
Pentium Overdrive	pins 2 & 3	Open	1 & 2 and 3 & 4	pins 1 & 2	pins 1 & 2

Note: Pins designated should be in the closed position.

Continued next page...

LION COMPUTERS, INC.  
NICE GREEN 486/PCI

... continued from previous page.

CPU SPEED CONFIGURATION		
Speed	JP19	
25MHz	Closed	
33MHz	Open	
50i MHz	Closed	
66i MHz	Open	

FLASH WRITE ENABLED		
Setting	JP7	JP8
í Normal mode	pins 1 & 2 closed	pins 1 & 2 closed
Flash write mode	pins 2 & 3 closed	pins 2 & 3 closed

VESA WAIT STATE/BUS SPEED CONFIGURATION		
CPU speed	Wait states	JP22
≤ 33MHz	0 wait states	Open
> 33MHz	1 wait state	Closed

MISCELLANEOUS TECHNICAL NOTE
Note: JP1 through JP5 are used for PCI interrupt selection. These jumpers are factory configured--do not alter.