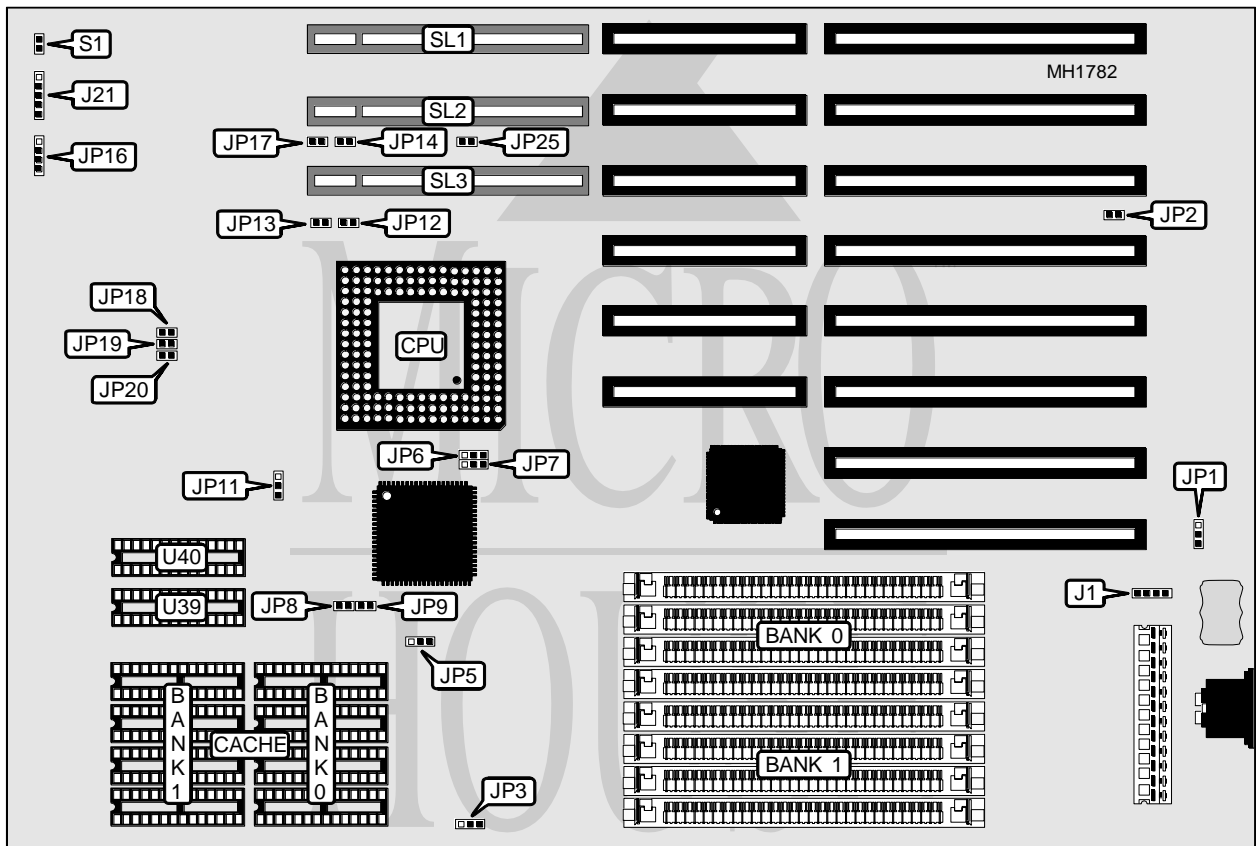


# INFORMTECH INTERNATIONAL, INC.

## IT486SLC MINI

<b>Processor</b>	80486SX/80486DX/80486DX2/Pentium Overdrive
<b>Processor Speed</b>	20/25/33/40/50(internal)/50/66(internal)MHz
<b>Chip Set</b>	Opti
<b>Max. Onboard DRAM</b>	32MB
<b>Cache</b>	64/128/256KB
<b>BIOS</b>	AMI
<b>Dimensions</b>	330mm x 218mm
<b>I/O Options</b>	32-bit VESA local bus slots (3)
<b>NPU Options</b>	None



CONNECTIONS			
Purpose	Location	Purpose	Location
External battery	J1	Reset switch	S1
Power LED & keylock	J21	32-bit VESA Local bus slot	SL1
Turbo LED	JP12	32-bit VESA Local bus slot	SL2
Turbo switch	JP13	32-bit VESA Local bus slot	SL3
Speaker	JP16		

Continued next page...

**INFORMTECH INTERNATIONAL, INC.**  
**IT486SLC MINI**

... continued from previous page.

USER CONFIGURABLE SETTINGS		
Function	Jumper	Position
í CMOS memory normal operation	JP1	pins 2 & 3 closed
CMOS memory clear	JP1	pins 1 & 2 closed
í Monitor type select color	JP2	Closed
Monitor type select monochrome	JP2	Open
í Clock chip installed	JP25	Open
Clock chip not installed	JP25	Closed

DRAM CONFIGURATION		
Size	Bank 0	Bank 1
1MB	(4) 256K x 9	NONE
2MB	(4) 256K x 9	(4) 256K x 9
4MB	(4) 1M x 9	NONE
5MB	(4) 256K x 9	(4) 1M x 9
8MB	(4) 1M x 9	(4) 1M x 9
16MB	(4) 4M x 9	NONE
20MB	(4) 1M x 9	(4) 4M x 9
32MB	(4) 4M x 9	(4) 4M x 9

CACHE CONFIGURATION				
Size	Bank 0	Bank 1	TAG (U39)	TAG (U40)
64KB	(4) 8K x 8	(4) 8K x 8	(1) 8K x 8	NONE
128KB	(4) 32K x 8	NONE	(1) 8K x 8	NONE
256KB	(4) 32K x 8	(4) 32K x 8	(1) 8K x 8	(1) 8K x 8

CACHE JUMPER CONFIGURATION				
Size	JP3	JP5	JP8	JP9
64KB	pins 2 & 3 closed	pins 2 & 3 closed	Open	Open
128KB	pins 1 & 2 closed	pins 1 & 2 closed	Open	Closed
256KB	pins 2 & 3 closed	pins 2 & 3 closed	Closed	Closed

CPU TYPE CONFIGURATION			
Type	JP6	JP7	JP11
80486SX	pins 2 & 3 closed	Open	Open
80486DX	pins 1 & 2 closed	pins 1 & 2 closed	Closed
80486DX2	pins 1 & 2 closed	pins 1 & 2 closed	Closed
Pentium Overdrive	pins 1 & 2 closed	pins 1 & 2 closed	Closed

Continued on next page . . .

INFORMTECH INTERNATIONAL, INC.  
IT486SLC MINI

... continued from previous page

CPU SPEED CONFIGURATION			
Speed	JP18	JP19	JP20
20MHz	Open	Closed	Closed
25MHz	Closed	Open	Closed
33MHz	Closed	Closed	Open
40MHz	Open	Open	Closed
50MHz	Closed	Closed	Closed
50MHz	Open	Closed	Open
66MHz	Closed	Closed	Closed

VESA WAIT STATE/BUS SPEED (ID2 & ID3) CONFIGURATION			
CPU speed	Wait states	JP14	JP17
< 33MHz	0 wait states	Open	Open
> 33MHz	1 wait state	Closed	Closed