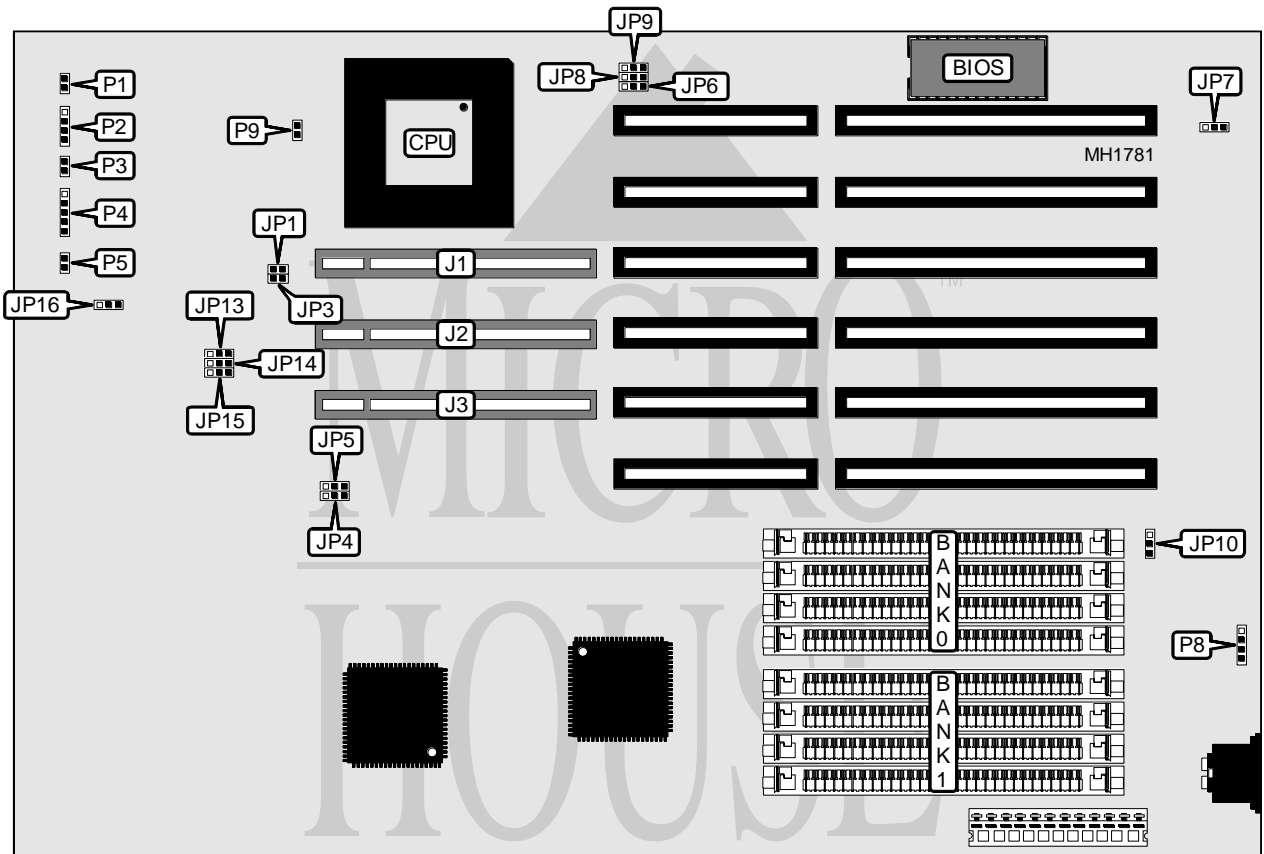


OCEAN INFORMATION SYSTEMS, INC.

HIPPO VL+

Processor	80486SX/80487SX/80486DX/80486DX2/Pentium Overdrive
Processor Speed	25/33/50(internal)/66(internal)MHz
Chip Set	Headland
Max. Onboard DRAM	32MB
Cache	None
BIOS	AMI
Dimensions	330mm x 218mm
I/O Options	32-bit VESA local bus slots (3)
NPU Options	None



CONNECTIONS			
Purpose	Location	Purpose	Location
32-bit VESA Local bus slot	J1	Reset switch	P3
32-bit VESA Local bus slot	J2	Power LED & keylock	P4
32-bit VESA Local bus slot	J3	Turbo LED	P5
Turbo switch	P1	External battery	P8
Speaker	P2	Cooling fan connector	P9

Continued next page...

OCEAN INFORMATION SYSTEMS, INC.

HIPPO VL+

... continued from previous page.

USER CONFIGURABLE SETTINGS		
Function	Jumper	Position
í Factory configured - do not alter	JP1	Closed
í Factory configured - do not alter	JP3	Open
í Monitor type select color	JP7	pins 1 & 2 closed
Monitor type select monochrome	JP7	pins 2 & 3 closed
í CMOS memory normal operation	JP10	pins 1 & 2 closed
CMOS memory clear	JP10	pins 2 & 3 closed
í Factory configured - do not alter	JP13	pins 2 & 3 closed
í Factory configured - do not alter	JP14	pins 2 & 3 closed
í Factory configured - do not alter	JP15	pins 2 & 3 closed
í Factory configured - do not alter	JP16	pins 1 & 2 closed

DRAM CONFIGURATION		
Size	Bank 0	Bank 1
1MB	(4) 256K x 9	NONE
2MB	(4) 256K x 9	(4) 256K x 9
4MB	(4) 1M x 9	NONE
5MB	(4) 256K x 9	(4) 1M x 9
8MB	(4) 1M x 9	(4) 1M x 9
16MB	(4) 4M x 9	NONE
20MB	(4) 1M x 9	(4) 4M x 9
32MB	(4) 4M x 9	(4) 4M x 9

CPU TYPE CONFIGURATION			
Type	JP6	JP8	JP9
80486SX	pins 2 & 3 closed	Open	pins 1 & 2 closed
80487SX	pins 1 & 2 closed	pins 1 & 2 closed	pins 2 & 3 closed
80486DX	pins 1 & 2 closed	pins 2 & 3 closed	pins 2 & 3 closed
80486DX2	pins 1 & 2 closed	pins 2 & 3 closed	pins 2 & 3 closed
Pentium Overdrive	pins 1 & 2 closed	pins 2 & 3 closed	pins 2 & 3 closed

CPU SPEED CONFIGURATION		
Speed	JP4	JP5
25MHz	pins 2 & 3 closed	pins 2 & 3 closed
33MHz	pins 1 & 2 closed	pins 1 & 2 closed
50iMHz	pins 2 & 3 closed	pins 2 & 3 closed
66iMHz	pins 1 & 2 closed	pins 1 & 2 closed