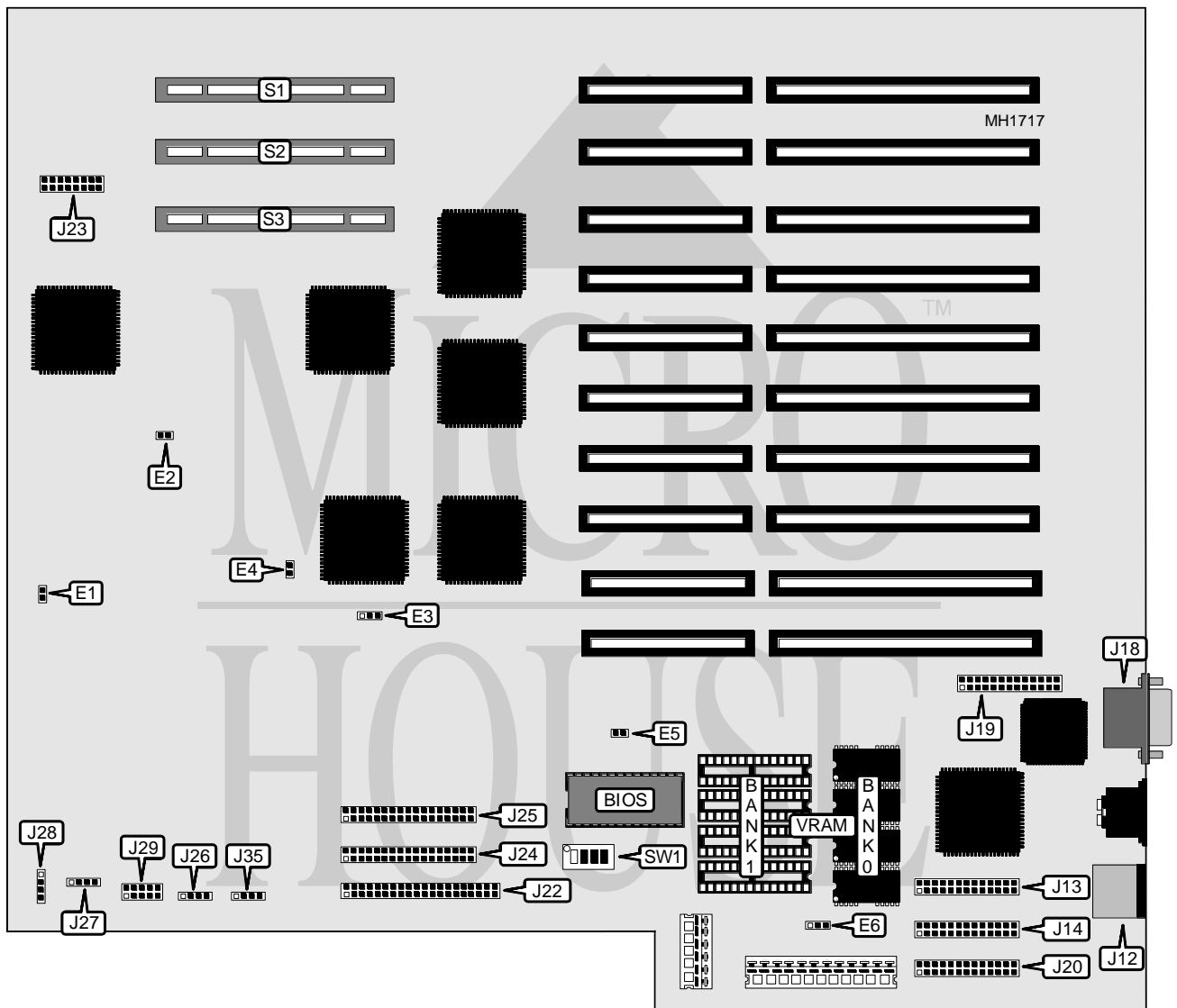


AST RESEARCH, INC. PREMIUM SE SYSTEM BOARD (P/N202472-001)

Processor	Dependent upon the Cupid CPU board installed
Processor Speed	Dependent upon the Cupid CPU board installed
Chip Set	Intel
Max. Onboard DRAM	Dependent upon the Cupid CPU and memory boards installed
Cache	Dependent upon the Cupid CPU and memory boards installed
BIOS	AST
Dimensions	355 x 304mm
I/O Options	32-bit Cupid local bus slots (3), floppy drive interface (3), IDE interface, parallel port, PS/2 mouse port, serial ports (2), video port
NPU Options	Dependent upon the Cupid CPU board installed



Continued on next page . . .

AST RESEARCH, INC.

PREMIUM SE SYSTEM BOARD (P/N202472-001)

... continued from previous page

CONNECTIONS			
Purpose	Location	Purpose	Location
PS/2 mouse port	J12	External battery	J26
Parallel port	J13	Speaker	J27
Serial port 1	J14	Fan connector	J28
SVGA port	J18	Front console connector	J29
VGA feature connector	J19	Hard drive LED	J35
Serial port 2	J20	32-bit Cupid Local bus slot	S1
IDE interface	J22	32-bit Cupid Local bus slot	S2
Floppy drive interface 1 & 2	J24	32-bit Cupid Local bus slot	S3
Floppy drive interface 3	J25		

USER CONFIGURABLE SETTINGS		
Function	Jumper/Switch	Position
í Factory configured - do not alter	E1	Closed
í Factory configured - do not alter	E2	Open
í Factory configured - do not alter	E3	pins 1 & 2 closed
í Factory configured - do not alter	E4	Closed
í Factory configured - do not alter	E5	Open
í Factory configured - do not alter	E6	Open
í Factory configured - do not alter	J23	N/A
í VGA enabled	SW1/switch 1	On
VGA disabled	SW1/switch 1	Off
í CMOS memory normal operation	SW1/switch 2	Off
CMOS memory clear	SW1/switch 2	On
í Password enabled	SW1/switch 3	Off
Password clear	SW1/switch 3	On
í BIOS normal operation	SW1/switch 4	Off
BIOS forced update	SW1/switch 4	On

CPU CONFIGURATION
Note: Dependent upon CPU board installed. See Cupid boards.

VIDEO MEMORY CONFIGURATION		
Size	Bank 0	Bank 1
512KB	(4) 256K x 4	NONE
1M	(4) 256K x 4	(4) 256K x 4