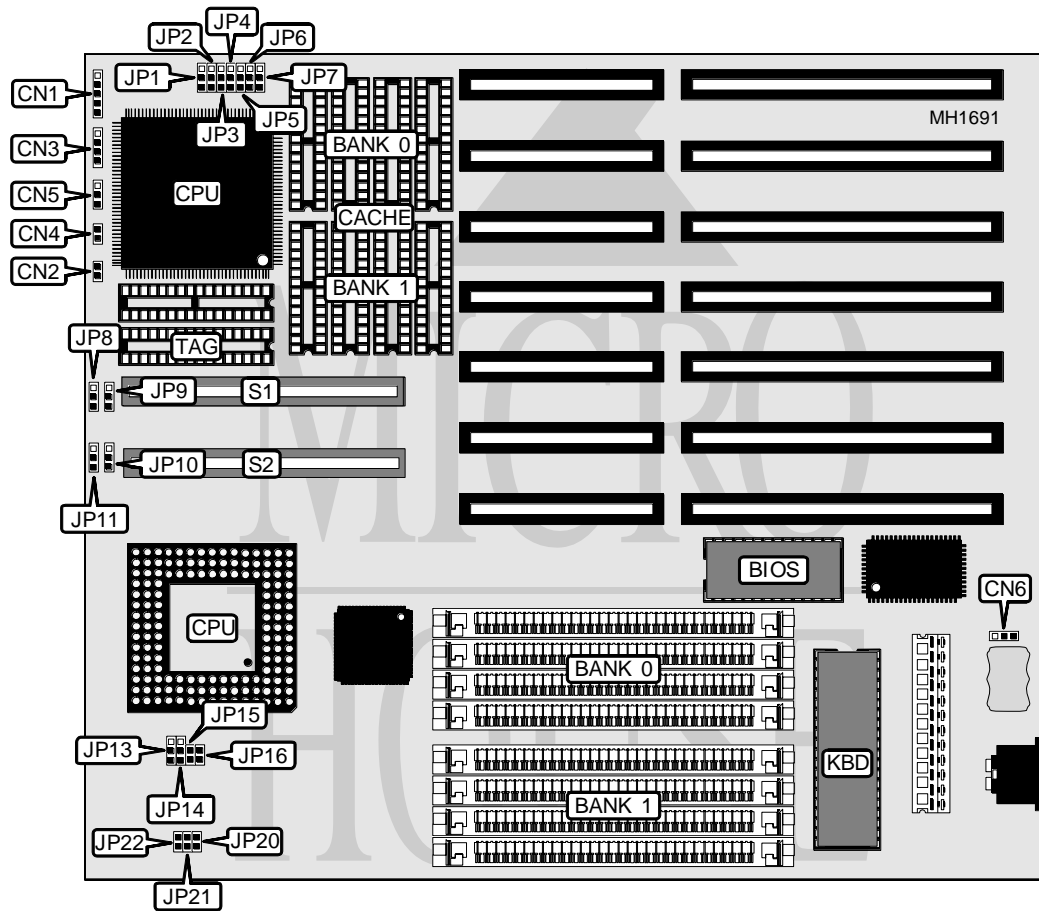


MICROMEDIA TECHNOLOGIES, INC.

486-VLS

Processor	80486SX/80486DX/80486DX2
Processor Speed	25/33/40/50(internal)/50/66(internal)MHz
Chip Set	SIS
Max. Onboard DRAM	32MB
Cache	64/128/256KB
BIOS	AMI
Dimensions	230mm x 218mm
I/O Options	32-bit VESA local bus slots (2)
NPU Options	None



CONNECTIONS			
Purpose	Location	Purpose	Location
Power LED & keylock	CN1	Turbo switch	CN5
Reset switch	CN2	External battery	CN6
Speaker	CN3	32-bit VESA Local bus slot	S1
Turbo LED	CN4	32-bit VESA Local bus slot	S2

Continued on next page . . .

MICROMEDIA TECHNOLOGIES, INC.

486 - VLS

... continued from previous page

USER CONFIGURABLE SETTINGS		
Function	Jumper	Position
í 80486 (PQFP)	JP16	Open
80486(PGA)	JP16	Closed

DRAM CONFIGURATION		
Size	Bank 0	Bank 1
1MB	(4) 256K x 9	NONE
2MB	(4) 256K x 9	(4) 256K x 9
4MB	(4) 1M x 9	NONE
8MB	(4) 1M x 9	(4) 1M x 9
16MB	(4) 4M x 9	NONE
20MB	(4) 1M x 9	(4) 4M x 9
32MB	(4) 4M x 9	(4) 4M x 9

CPU TYPE CONFIGURATION			
Type	JP13	JP14	JP15
80486SX	Open	pins 2 & 3 closed	Open
80487SX	pins 2 & 3 closed	pins 1 & 2 closed	Closed
80486DX	pins 1 & 2 closed	pins 1 & 2 closed	Closed
80486DX2	pins 1 & 2 closed	pins 1 & 2 closed	Closed

CPU SPEED CONFIGURATION			
Type	JP20	JP21	JP22
25MHz	Closed	Open	Open
33MHz	Closed	Closed	Closed
40MHz	Closed	Closed	Open
50MHz	Open	Open	Closed

CACHE JUMPER CONFIGURATION							
Size	JP1	JP2	JP3	JP4	JP5	JP6	JP7
64KB	pins 1 & 2	pins 1 & 2	pins 1 & 2	pins 1 & 2	pins 2 & 3	N/A	pins 1 & 2
128KB	pins 2 & 3	pins 1 & 2	pins 2 & 3	pins 1 & 2	pins 1 & 2	pins 1 & 2	pins 2 & 3
256KB	pins 2 & 3	pins 2 & 3	pins 2 & 3	pins 2 & 3	pins 2 & 3	pins 2 & 3	pins 2 & 3

Note: Pins designated should be in the closed position.

VESA WAIT STATE/BUS SPEED (S1 & S2) CONFIGURATION				
CPU speed	S1/JP8	S1/JP9	S2/JP10	S2/JP11
≤ 33MHz	pins 1 & 2 closed	N/A	pins 1 & 2 closed	N/A
> 33MHz	pins 2 & 3 closed	N/A	pins 2 & 3 closed	N/A
0 wait states	N/A	pins 1 & 2 closed	N/A	pins 1 & 2 closed
1 wait state	N/A	pins 2 & 3 closed	N/A	pins 2 & 3 closed