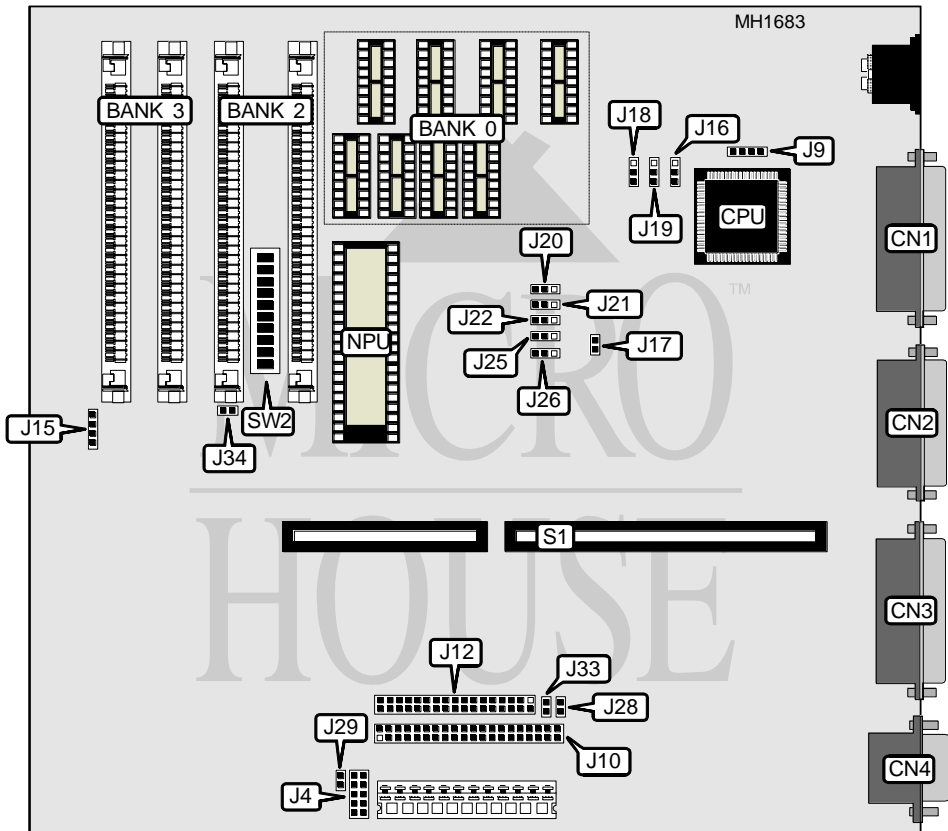


LEADING TECHNOLOGY 5500AT

Processor	80286 (Exact location is unknown)
Processor Speed	8/10/12/16/20/25MHz
Chip Set	SIS
Max. Onboard DRAM	5MB
Cache	None
BIOS	AMI
Dimensions	330mm x 218mm
I/O Options	Floppy drive interface, IDE interface, Joystick port, parallel port, Riser card, serial ports (2)
NPU Options	80287



CONNECTIONS			
Purpose	Location	Purpose	Location
Parallel port	CN1	IDE interface	J10
Joystick port	CN2	Floppy drive interface	J12
Serial port 2 (25 pin)	CN3	Speaker	J15
Serial port 1 (9 pin)	CN4	IDE interface LED	J29
Function panel connector	J4	Riser Card	S1
External battery	J9		

Continued on next page . . .

LEADING TECHNOLOGY

5500AT

... continued from previous page

USER CONFIGURABLE SETTINGS		
Function	Jumper/Switch	Position
í Joystick port enabled	J17	closed
Joystick port disabled	J17	open
í IDE interface enabled	J28	open
IDE interface disabled	J28	closed
í Floppy drive interface enabled	J33	closed
Floppy drive interface disabled	J33	open
í Parity enabled	J34	closed
Parity disabled	J34	open

DRAM CONFIGURATION			
Size	Bank 0	Bank 1	Bank 2
1MB	(8) 441100	NONE	NONE
1MB	(4) 256K x 9	NONE	NONE
2MB	(4) 256K x 9	(4) 256K x 9	NONE
3MB	(4) 256K x 9	(4) 256K x 9	(4) 256K x 9
4MB	(4) 1M x 9	NONE	NONE
5MB	(4) 256K x 9	(4) 1M x 9	NONE

SERIAL PORT CONFIGURATION					
Port 1 (CN4)	Port 2 (CN2)	J20	J22	J25	J26
í COM1	COM2	pins 2 & 3	pins 1 & 2	Open	Open
COM1	COM3	pins 2 & 3	Open	pins 1 & 2	Open
COM1	COM4	pins 2 & 3	Open	Open	pins 1 & 2
COM2	COM1	pins 1 & 2	pins 2 & 3	Open	Open
COM2	COM3	Open	pins 2 & 3	pins 1 & 2	Open
COM2	COM4	Open	pins 2 & 3	Open	pins 1 & 2
COM3	COM1	pins 1 & 2	Open	pins 2 & 3	Open
COM3	COM2	Open	pins 1 & 2	pins 2 & 3	Open
COM3	COM4	Open	Open	pins 2 & 3	pins 1 & 2
COM4	COM1	pins 2 & 3	Open	Open	pins 1 & 2
COM4	COM2	Open	pins 1 & 2	Open	pins 2 & 3
COM4	COM3	Open	Open	pins 1 & 2	pins 2 & 3

Note: Pins designated should be in the closed position.

Continued on next page ...

LEADING TECHNOLOGY

5500AT

... continued from previous page

SERIAL PORT IRQ CONFIGURATION			
Port 1 (CN1)	Port 2 (CN2)	J18	J19
í IRQ4	IRQ3	pins 2 & 3 closed	pins 1 & 2 closed
IRQ3	IRQ4	pins 1 & 2 closed	pins 2 & 3 closed

PARALLEL PORT CONFIGURATION			
LPT	IRQ	J16	J21
í 1	7	pins 2 & 3 closed	pins 2 & 3 closed
1	5	pins 2 & 3 closed	pins 1 & 2 closed
2	7	pins 1 & 2 closed	pins 2 & 3 closed
2	5	pins 1 & 2 closed	pins 1 & 2 closed