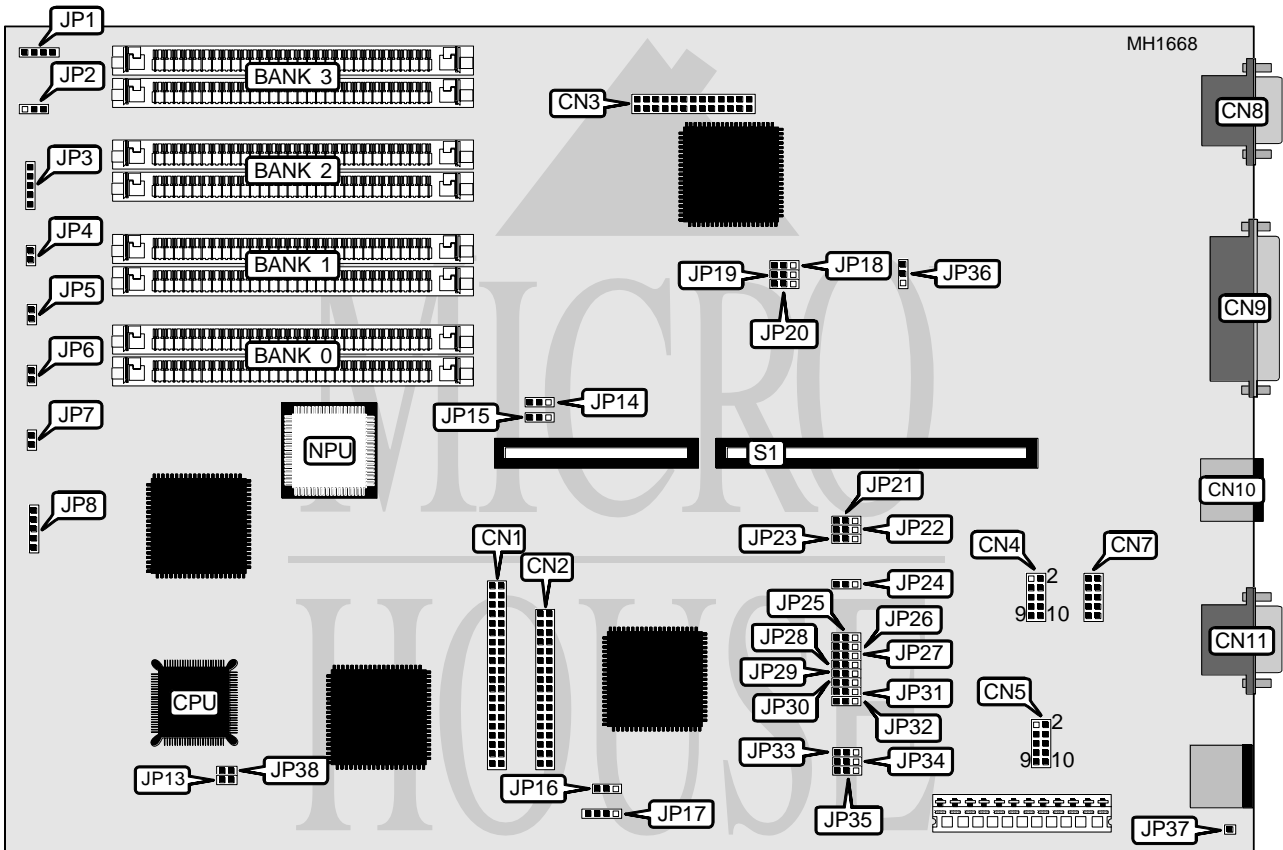


DIAMOND FLOWER, INC.

386SX-25/33DNB/DCB AIO

Processor	80386SX
Processor Speed	25/33MHz
Chip Set	Diamond Flower/Acer
Max. Onboard DRAM	16MB
SRAM Cache	None
BIOS	AMI
Dimensions	330mm x 218mm
I/O Options	Floppy drive interface, IDE interface, parallel port, PS/2 mouse port, riser card slot, serial ports (2) VGA feature connector, VGA port
NPU Options	80387SX



Continued on next page . . .

DIAMOND FLOWER, INC.
386SX-25/33DNB/DCB AIO

... continued from previous page

CONNECTIONS			
Purpose	Location	Purpose	Location
IDE interface	CN1	Keyboard connector	JP3
Floppy drive interface	CN2	Turbo LED	JP4
VGA Feature connector	CN3	Turbo switch	JP5
Serial port (COM2)	CN7	Reset switch	JP6
VGA port	CN8	IDE interface LED	JP7
Parallel port	CN9	Power LED & keylock	JP8
PS/2 mouse port	CN10	External battery	JP17
Serial port (COM1)	CN11	Riser Card	S1
Speaker	JP2		
Note: JP5 is located on the 386SX-25DNB/DCB AIO system board only. JP38 is located on the 386SX-33DNB/DCB AIO system board only.			

USER CONFIGURABLE SETTINGS		
Function	Jumper	Position
í Speaker select internal	JP1	pins 1 & 2 closed
Speaker select external	JP1	pins 2 & 3 closed
í Monitor type select color	JP13	closed
Monitor type select monochrome	JP13	open
í Factory configured - do not alter	JP14	pins 1 & 2 closed
í Factory configured - do not alter	JP15	pins 2 & 3 closed
í Battery select external	JP16	pins 2 & 3 closed
Battery select internal	JP16	pins 1 & 2 closed
í Parallel port select IRQ7	JP24	pins 1 & 2 closed
Parallel port select IRQ5	JP24	pins 2 & 3 closed
í Factory configured - do not alter	JP30	pins 1 & 2 closed
í Floppy disk drive enabled	JP31	closed
Floppy disk drive disabled	JP31	open
í IDE interface enabled	JP32	pins 1 & 2 closed
IDE interface disabled	JP32	pins 2 & 3 closed
í Factory configured - do not alter	JP37	Open
í Factory configured - do not alter	JP38	N/A

Continued on next page . . .

DIAMOND FLOWER, INC.

386SX-25/33DNB/DCB AIO

... continued from previous page

DRAM CONFIGURATION				
Size	Bank 0	Bank 1	Bank 2	Bank 3
512KB	(2) 256K x 9	NONE	NONE	NONE
1MB	(2) 256K x 9	(2) 256K x 9	NONE	NONE
1.5MB	(2) 256K x 9	(2) 256K x 9	(2) 256K x 9	NONE
2MB	(2) 1M x 9	NONE	NONE	NONE
2MB	(2) 256K x 9	(2) 256K x 9	(2) 256K x 9	(2) 256K x 9
2.5MB	(2) 1M x 9	(2) 256K x 9	NONE	NONE
3MB	(2) 1M x 9	(2) 256K x 9	(2) 256K x 9	NONE
4MB	(2) 1M x 9	(2) 1M x 9	NONE	NONE
4.5MB	(2) 1M x 9	(2) 1M x 9	(2) 256K x 9	NONE
5MB	(2) 1M x 9	(2) 1M x 9	(2) 256K x 9	(2) 256K x 9
6MB	(2) 1M x 9	(2) 1M x 9	(2) 1M x 9	NONE
8MB	(2) 1M x 9	(2) 1M x 9	(2) 1M x 9	(2) 1M x 9
8MB	(2) 4M x 9	NONE	NONE	NONE
10MB	(2) 4M x 9	(2) 1M x 9	NONE	NONE
16MB	(2) 4M x 9	(2) 4M x 9	NONE	NONE

SERIAL PORT CONFIGURATION				
COM1 (CN11)	COM2 (CN7)	JP27	JP28	JP29
í COM1	í COM2	Pins 1 & 2 closed	Pins 1 & 2 closed	Pins 1 & 2 closed
COM1	Disabled	Pins 1 & 2 closed	Pins 2 & 3 closed	Pins 1 & 2 closed
COM2	COM1	Pins 2 & 3 closed	Pins 1 & 2 closed	Pins 1 & 2 closed
COM2	Disabled	Pins 1 & 2 closed	Pins 2 & 3 closed	Pins 2 & 3 closed
Disabled	COM1	Pins 2 & 3 closed	Pins 1 & 2 closed	Pins 2 & 3 closed
Disabled	COM2	Pins 1 & 2 closed	Pins 1 & 2 closed	Pins 2 & 3 closed
Disabled	Disabled	Open	Pins 2 & 3 closed	Pins 2 & 3 closed

SERIAL PORT NORMAL/FORCED TRUE CONFIGURATION			
COM1	JP33	JP34	JP35
í Normal	Pins 1 & 2 closed	Pins 1 & 2 closed	Pins 1 & 2 closed
Forced True	Pins 2 & 3 closed	Pins 2 & 3 closed	Pins 2 & 3 closed

SERIAL PORT NORMAL/FORCED TRUE CONFIGURATION			
COM2	JP21	JP22	JP23
í Normal	Pins 1 & 2 closed	Pins 1 & 2 closed	Pins 1 & 2 closed
Forced True	Pins 2 & 3 closed	Pins 2 & 3 closed	Pins 2 & 3 closed

Continued on next page ...

DIAMOND FLOWER, INC.
386SX-25/33DNB/DCB AIO

... continued from previous page

SERIAL PORT'S DTE/DCE CONFIGURATION			
Primary serial port CN5		Secondary serial port CN4	
<p>1 TX 2 RD 3 RTS 4 CTS 9 DTR DTE</p>	<p>1 TX 2 RD 3 RTS 4 CTS 9 DTR DCE</p>	<p>1 TX 2 RD 3 RTS 4 CTS 9 DTR DTE</p>	<p>1 TX 2 RD 3 RTS 4 CTS 9 DTR DCE</p>

PARALLEL PORT CONFIGURATION		
LPT	JP25	JP26
í 1	Pins 2 & 3 closed	Pins 1 & 2 closed
2	Pins 1 & 2 closed	Pins 1 & 2 closed
3	Pins 1 & 2 closed	Pins 2 & 3 closed
Disabled	Pins 2 & 3 closed	Pins 2 & 3 closed

LOCAL BUS VGA CONFIGURATION				
Mode	JP18	JP19	JP20	JP36
í Enabled	Pins 2 & 3 closed	Pins 2 & 3 closed	Pins 2 & 3 closed	Pins 1 & 2 closed
Disabled	Pins 1 & 2 closed	Pins 1 & 2 closed	Pins 1 & 2 closed	Pins 2 & 3 closed