

# TMC RESEARCH CORPORATION

## IAT34PM

**Processor** 80386DX/CX486DLC/80486SX/80487SX/  
80486DX/ODP486SX/80486DX2/ODP586SX

**Processor Speed** 20/25/33/50 (Internal)/50/66 (Internal)MHz

**Chip Set** OPT1

**Max. onboard DRAM** 32MB

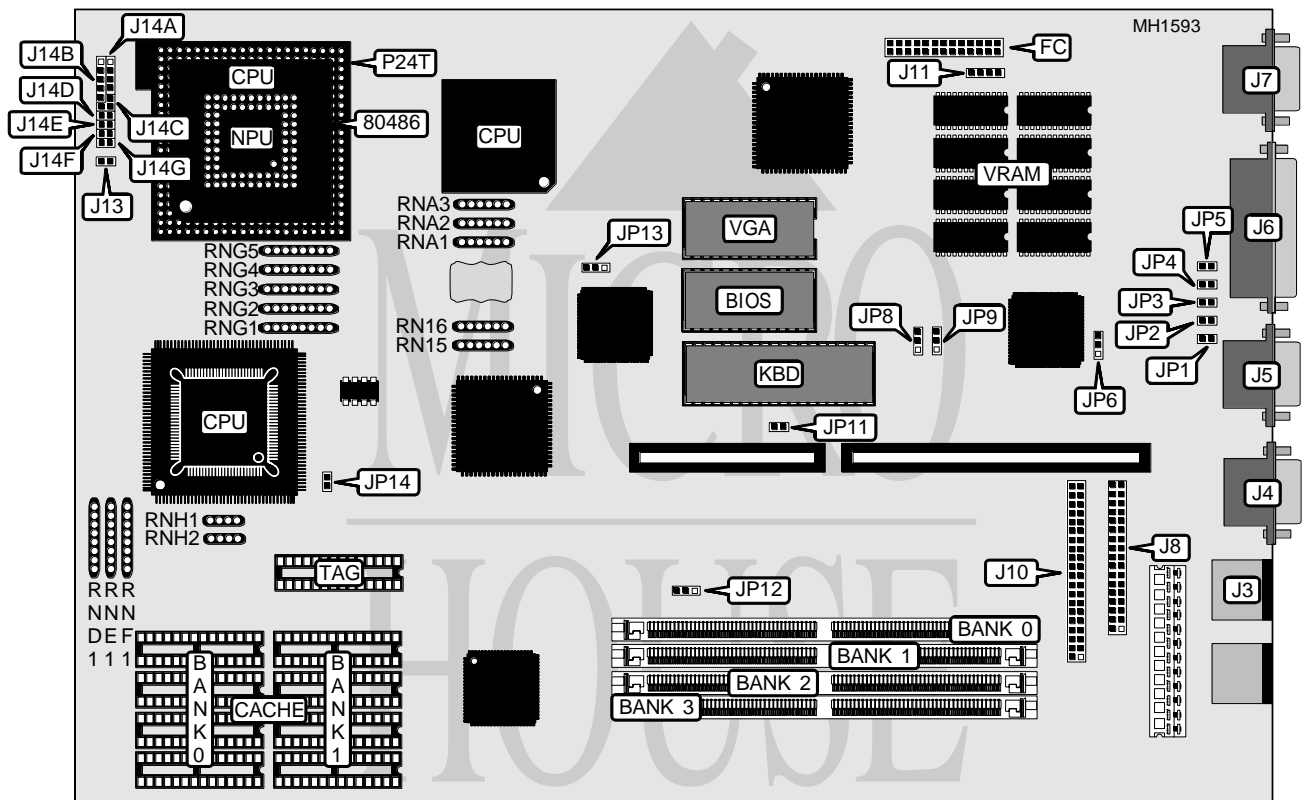
**SRAM Cache** 64/128/256KB

**BIOS** AMI

**Dimensions** 330mm x 218mm

**I/O Options** Floppy drive interface, IDE interface, parallel port, PS/2 mouse port, serial ports (2), VGA feature connector, VGA port

**NPU Options** 80387DX



CONNECTIONS			
Purpose	Location	Purpose	Location
PS/2 mouse	J3	Video feature connector	J12
Serial port	J4	Speaker	J14A
Serial port	J5	Power LED & keylock	J14B
Parallel port	J6	Not used	J14C
VGA port	J7	Turbo switch	J14D
Floppy drive interface	J8	Turbo LED	J14E
IDE interface	J10	Reset switch	J14F
External battery	J11	IDE interface LED	J14G, J13

Continued on next page . . .

# TMC RESEARCH CORPORATION

## IAT34PM

... continued from previous page

USER CONFIGURABLE SETTINGS		
Function	Jumper	Position
í Parallel port select unidirectional (printer)	JP6	pins 2 & 3 closed
Parallel port select bidirectional	JP6	pins 1 & 2 closed
í Floppy drive select TEAC brand	JP7 & JP8	pins 1 & 2 closed
Floppy drive select Toshiba brand	JP7 & JP8	pins 2 & 3 closed
í Monitor type select color	JP11	Closed
Monitor type select monochrome	JP11	Open
í SIMMs type select single density	JP12	pins 1 & 2 closed
SIMMs type select double density	JP12	pins 2 & 3 closed
í CMOS memory normal operation (Internal Battery)	JP13	pins 2 & 3 closed
CMOS memory normal operation (External Battery)	JP13	Open
CMOS memory clear	JP13	pins 1 & 2 closed

DRAM CONFIGURATION SINGLE DENSITY SIMMS					
Size	Bank 0	Bank 1	Bank 2	Bank 3	JP12
1MB	256K x 36	NONE	NONE	NONE	pins 1 & 2 closed
2MB	256K x 36	256K x 36	256K x 36	NONE	pins 1 & 2 closed
2MB	512K x 36	NONE			pins 2 & 3 closed
3MB	256K x 36	256K x 36	256K x 36	NONE	pins 1 & 2 closed
4MB	1M x 36	NONE	NONE	NONE	pins 1 & 2 closed
5MB	1M x 36	256K x 36	NONE	NONE	pins 1 & 2 closed
6MB	1M x 36	256K x 36	256K x 36	NONE	pins 1 & 2 closed
8MB	2M x 36	NONE	NONE	NONE	pins 2 & 3 closed
8MB	1M x 36	1M x 36	NONE	NONE	pins 1 & 2 closed
9MB	1M x 36	1M x 36	256K x 36	NONE	pins 1 & 2 closed
10MB	512K x 36	2M x 36	NONE	NONE	pins 2 & 3 closed
10MB	1M x 36	1M x 36	256K x 36	256K x 36	pins 1 & 2 closed
12MB	1M x 36	1M x 36	1M x 36	NONE	pins 1 & 2 closed
13MB	1M x 36	1M x 36	1M x 36	256K x 36	pins 1 & 2 closed
16MB	1M x 36	1M x 36	1M x 36	1M x 36	pins 1 & 2 closed
16MB	2M x 36	2M x 36	NONE	NONE	pins 2 & 3 closed
16MB	4M x 36	NONE	NONE	NONE	pins 1 & 2 closed
20MB	4M x 36	1M x36	NONE	NONE	pins 1 & 2 closed
24MB	4M x 36	1M x36	1M x36	NONE	pins 1 & 2 closed
28MB	4M x 36	1M x36	1M x36	1M x36	pins 1 & 2 closed
32MB	4M x 36	4M x 36	NONE	NONE	pins 1 & 2 closed
32MB	8M x 36	NONE	NONE	NONE	pins 2 & 3 closed
36MB	4M x 36	4M x 36	1M x36	NONE	pins 1 & 2 closed
40MB	4M x 36	4M x 36	1M x36	1M x36	pins 1 & 2 closed
40MB	8M x 36	2M x 36	NONE	NONE	pins 2 & 3 closed
48MB	4M x 36	4M x 36	4M x 36	NONE	pins 1 & 2 closed
52MB	4M x 36	4M x 36	4M x 36	1M x36	pins 1 & 2 closed
64MB	8M x 36	8M x 36	NONE	NONE	pins 2 & 3 closed
64MB	4M x 36	4M x 36	4M x 36	4M x 36	pins 1 & 2 closed

Continued on next page . . .

# TMC RESEARCH CORPORATION

## IAT48PX

... continued from previous page

CACHE CONFIGURATION			
Size	Bank 0	Bank 1	TAG
64KB	(4) 8K x 8	(4) 8K x 8	(1) 8K x 8
128KB	(4) 32K x 8	None	(1) 32K x 8
256KB	(4) 32K x 8	(4) 32K x 8	(1) 32K x 8

CACHE RN SOCKET CONFIGURATION			
Size	RND1	RNE1	RNF1
64KB	Installed	Not installed	Not installed
128KB	Not installed	Installed	Not installed
256KB	Not installed	Not installed	Installed

I/O PORT CONFIGURATION									
IDE	FDC	LPT	PORT1	PORT2	JP1	JP2	JP3	JP4	JP5
Primary	Primary	1	COM1	COM2	Closed	Open	Open	Open	Open
Primary	Primary	2	COM1	COM2	Open	Open	Open	Open	Open
Second.	Primary	1	COM1	COM2	Open	Closed	Open	Open	Open
Disabled	Primary	1	COM1	COM2	Closed	Open	Closed	Closed	Open
Disabled	Primary	2	COM1	COM2	Open	Open	Closed	Closed	Open
Primary	Disabled	1	COM1	COM2	Closed	Open	Open	Closed	Closed
Primary	Disabled	2	COM1	COM2	Open	Open	Open	Closed	Closed
Second.	Disabled	1	COM1	COM2	Open	Closed	Open	Closed	Closed
Disabled	Disabled	1	COM1	COM2	Closed	Open	Closed	Open	Closed
Disabled	Disabled	2	COM1	COM2	Open	Open	Closed	Open	Closed
Primary	Primary	1	COM1	Disabled	Closed	Closed	Closed	Open	Open
Second.	Primary	1	COM1	Disabled	Open	Open	Open	Open	Open
Primary	Primary	2	COM1	Disabled	Open	Closed	Closed	Closed	Open
Primary	Primary	2	COM2	COM3	Open	Open	Closed	Open	Open
Disabled	Primary	2	COM2	COM3	Closed	Closed	Closed	Closed	Open
Primary	Disabled	2	COM2	COM3	Open	Open	Closed	Closed	Closed
Disabled	Disabled	2	COM2	COM3	Closed	Closed	Closed	Open	Closed
Primary	Primary	1	COM3	COM4	Closed	Closed	Open	Open	Open
Second.	Primary	2	COM3	COM4	Closed	Open	Closed	Open	Open
Second.	Disabled	2	COM3	COM4	Closed	Open	Closed	Closed	Closed
Disabled	Primary	1	COM3	COM4	Open	Closed	Closed	Closed	Open
Primary	Disabled	1	COM3	COM4	Closed	Closed	Open	Open	Closed
Disabled	Disabled	1	COM3	COM4	Open	Closed	Closed	Open	Closed
Primary	Primary	1	COM3	Disabled	Closed	Open	Open	Closed	Open
Primary	Primary	2	COM3	Disabled	Open	Closed	Open	Closed	Open
Second.	Primary	2	COM3	Disabled	Closed	Closed	Open	Closed	Open
Primary	Primary	1	Disabled	Disabled	Closed	Open	Open	Open	Closed
Primary	Primary	2	Disabled	Disabled	Open	Open	Open	Open	Closed
Second.	Primary	1	Disabled	Disabled	Open	Closed	Open	Open	Closed
Second.	Primary	2	Disabled	Disabled	Closed	Closed	Open	Open	Closed
Disabled	Primary	Disabled	Disabled	Disabled	Open	Closed	Closed	Closed	Closed
Disabled	Disabled	Disabled	Disabled	Disabled	Closed	Closed	Closed	Closed	Closed

Continued on next page ...

# TMC RESEARCH CORPORATION

## IAT48PX

CPU SPEED CONFIGURATION						
CPU	Speed	RNG1	RNG2	RNG3	RNG4	RNG5
80386DX	33MHz	Installed	Not installed	Not installed	Not installed	Not installed
CX486SLC	33MHz	Installed	Not installed	Not installed	Not installed	Not installed
80386DX	40MHz	Not installed	Installed	Not installed	Not installed	Not installed
CX486SLC	40MHz	Not installed	Installed	Not installed	Not installed	Not installed
80486SX	25MHz	Not installed	Not installed	Installed	Not installed	Not installed
80487SX	25MHz	Not installed	Not installed	Installed	Not installed	Not installed
80486DX	25MHz	Not installed	Not installed	Installed	Not installed	Not installed
ODP486SX	25MHz	Not installed	Not installed	Installed	Not installed	Not installed
80486DX2	50i MHz	Not installed	Not installed	Installed	Not installed	Not installed
ODP586SX	50i MHz	Not installed	Not installed	Installed	Not installed	Not installed
80486SX	33MHz	Not installed	Not installed	Not installed	Installed	Not installed
80487SX	33MHz	Not installed	Not installed	Not installed	Installed	Not installed
80486DX	33MHz	Not installed	Not installed	Not installed	Installed	Not installed
80486DX	50MHz	Not installed	Not installed	Not installed	Not installed	Installed
ODP486SX	33MHz	Not installed	Not installed	Not installed	Installed	Not installed
80486DX2	66i MHz	Not installed	Not installed	Not installed	Installed	Not installed
ODP586SX	66i MHz	Not installed	Not installed	Not installed	Installed	Not installed

80386 CPU TYPE CONFIGURATION				
CPU	RNH1	RNH2	RN15	RN16
80386DX	Installed	Not installed	Installed	Not installed
CX486SLC	Not installed	Installed	Installed	Not installed

80486 CPU TYPE CONFIGURATION					
CPU	RNA1	RNB1	RNC1	RN15	RN16
80486SX	Not installed	Not installed	Installed	Not installed	Installed
80487SX	Not installed	Installed	Not installed	Not installed	Installed
80486DX	Installed	Not installed	Not installed	Not installed	Installed
ODP486SX	Not installed	Installed	Not installed	Not installed	Installed
80486DX2	Installed	Not installed	Not installed	Not installed	Installed
ODP586SX	Not installed	Installed	Not installed	Not installed	Installed