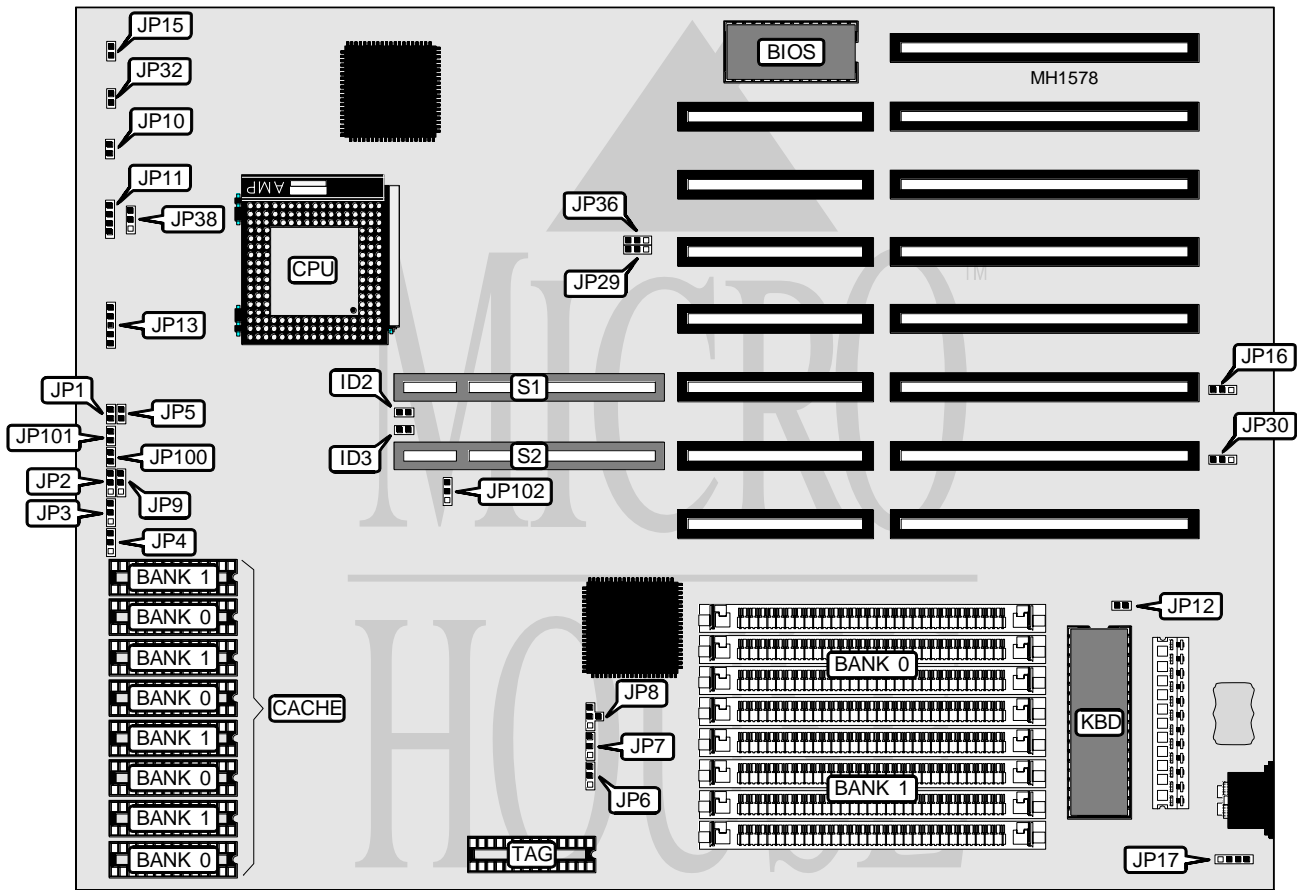


**EVEREX SYSTEMS, INC.**  
**STEP ISA VL (EV-18211)**

**Processor** 80486SX/80487SX/80486DX  
**Processor Speed** 20/25/33/50MHZ  
**Chip Set** Contaq  
**Max. Onboard DRAM** 32MB  
**Cache** 64/128/256KB  
**BIOS** AMI  
**Dimensions** 330mm x 218mm  
**I/O Options** 32-bit VESA local bus slots (2)  
**NPU Options** None



CONNECTIONS			
Purpose	Location	Purpose	Location
Turbo LED	JP10	External battery	JP17
Speaker	JP11	Turbo switch	JP32
Power LED & keylock	JP13	32-bit VESA Local bus slot	S1
Reset switch	JP15	32-bit VESA Local bus slot	S2

Continued on next page . . .

**EVEREX SYSTEMS, INC.**  
**STEP ISA VL (EV-18211)**

... continued from previous page

USER CONFIGURABLE SETTINGS		
Function	Jumper/Switch	Position
í Factory configured - do not alter	JP1	Closed
í Fast gate A20 normal operation	JP9	pins 2 & 3 closed
Fast gate A20 select alternate	JP9	pins 1 & 2 closed
í Monitor type select color	JP12	Closed
Monitor type select monochrome	JP12	Open
í CMOS memory normal operation	JP16	pins 1 & 2 closed
CMOS memory clear	JP16	pins 2 & 3 closed
í CPU select 2 wait states	JP29	pins 2 & 3 closed
CPU select 1 wait state	JP29	pins 1 & 2 closed
í LCLK gate select 1 wait state	JP36	pins 1 & 2 closed
LCLK gate select 2 wait state	JP36	pins 2 & 3 closed
í CPUADS select 0 wait states	JP38	pins 1 & 2 closed
CPUADS select 1 wait state	JP38	pins 2 & 3 closed
í Factory configured - do not alter	JP100	Open
í Factory configured - do not alter	JP101	Open
í Factory configured - do not alter	JP102	pins 2 & 3 closed

DRAM CONFIGURATION		
Size	Bank 0	Bank 1
1MB	(4) 256K x 9	NONE
2MB	(4) 256K x 9	(4) 256K x 9
4MB	(4) 1M x 9	NONE
8MB	(4) 1M x 9	(4) 1M x 9
16MB	(4) 4M x 9	NONE
20MB	(4) 1M x 9	(4) 4M x 9
32MB	(4) 4M x 9	(4) 4M x 9

CACHE CONFIGURATION			
Size	Bank 0	Bank 1	TAG
64KB	(4) 8K x 8	(4) 8K x 8	(1) 8K x 8
128KB	(4) 32K x 8	NONE	(1) 8K x 8
256KB	(4) 32K x 8	(4) 32K x 8	(1) 32K x 8

CACHE JUMPER CONFIGURATION			
Size	JP6	JP7	JP8
64KB	pins 2 & 3 closed	pins 2 & 3 closed	pins 2 & 4 closed
128KB	pins 2 & 3 closed	pins 1 & 2 closed	pins 2 & 3 closed
256KB	pins 1 & 2 closed	pins 1 & 2 closed	pins 1 & 2 closed

Continued on next page...

EVEREX SYSTEMS, INC.  
STEP ISA VL (EV-18211)

... continued from previous page

VESA WAIT STATE/BUS SPEED (ID2 & ID3) CONFIGURATION			
CPU speed	Wait states	ID3	ID2
≤ 33MHz	0 wait states	Open	Open
> 33MHz	1 wait state	Closed	Closed

CPU SPEED CONFIGURATION	
Speed	JP30
20MHz	pins 2 & 3 closed
25MHz	pins 2 & 3 closed
33MHz	pins 1 & 2 closed
50MHz	pins 1 & 2 closed

CPU TYPE CONFIGURATION				
Type	JP2	JP3	JP4	JP5
80486SX	pins 1 & 2 closed	Open	Open	Open
80487SX	pins 2 & 3 closed	Closed	pins 1 & 2 closed	Closed
80486DX	pins 2 & 3 closed	Closed	pins 2 & 3 closed	Open