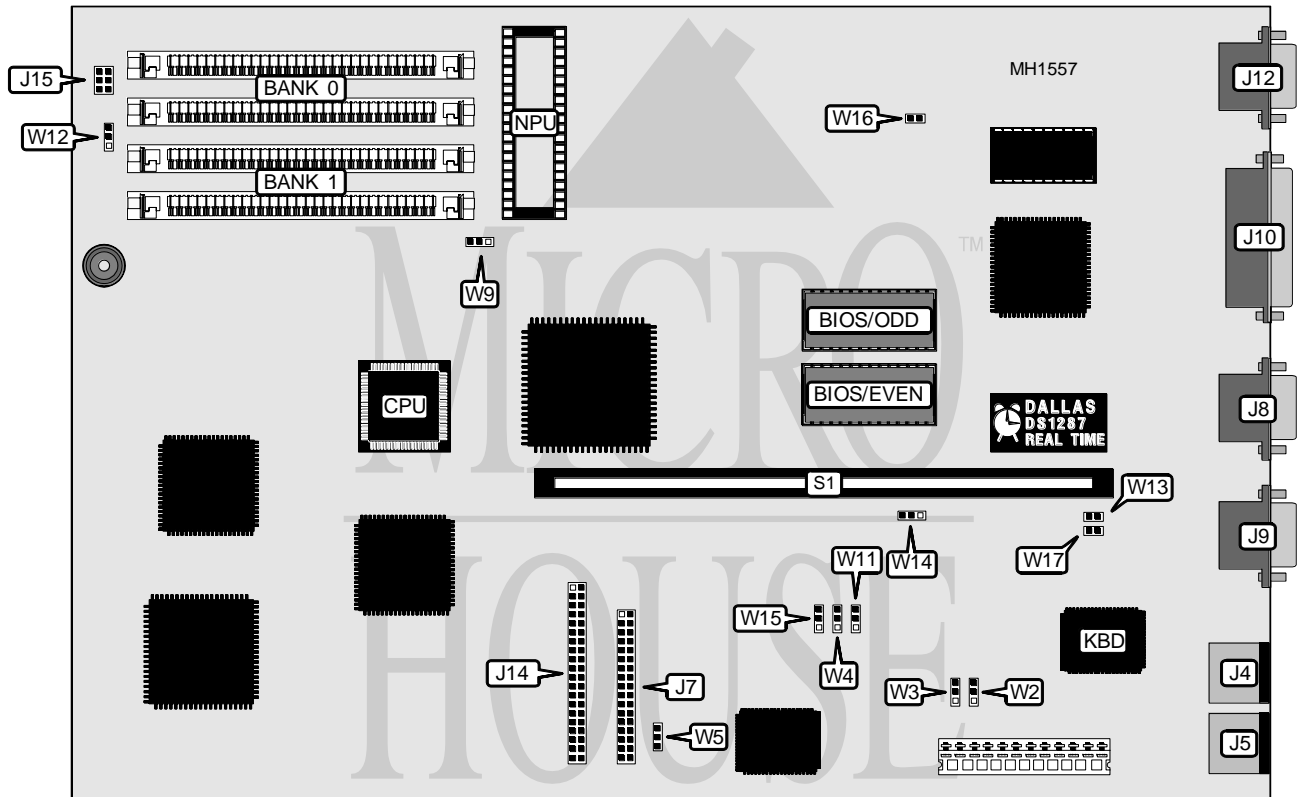


PACKARD BELL VICTORY

Processor	80286
Processor Speed	12/16MHz
Chip Set	Unknown
Max. onboard DRAM	4MB
Cache	None
BIOS	Phoenix
Dimensions	330mm x 220mm
I/O Options	Floppy drive interface, IDE interface, multi-function connector (keylock, IDE interface LED, reset), parallel port, PS/2 keyboard, PS/2 mouse, serial ports (2), VGA port
NPU Options	80287



CONNECTIONS			
Purpose	Location	Purpose	Location
PS/2 mouse	J4	Parallel port	J10
PS/2 keyboard	J5	VGA port	J12
Floppy drive interface	J7	IDE interface	J14
Serial port 2	J8	Multi-function connector	J15
Serial port 1	J9	Riser card	S1

Continued on next page . . .

PACKARD BELL VICTORY

... continued from previous page

USER CONFIGURABLE SETTINGS		
Function	Jumper/Switch	Position
í Monitor type select color	W3	pins 2 & 3 closed
Monitor type select monochrome	W3	pins 1 & 2 closed
í Floppy drive interface enabled	W4	pins 2 & 3 closed
Floppy drive interface disabled	W4	pins 1 & 2 closed
NPU select 12MHz	W9	pins 1 & 2 closed
NPU select 6MHz	W9	pins 2 & 3 closed
í Onboard video enabled	W11	pins 2 & 3 closed
Onboard video disabled	W11	pins 1 & 2 closed
í IDE interface LED enabled	W12	pins 2 & 3 closed
IDE interface LED disabled	W12	pins 1 & 2 closed
í PS/2 mouse port enabled (IRQ12)	W16	Closed
PS/2 mouse port disabled	W16	Open
<p>Note: Inserting a 16-bit hard drive controller card into the ISA bus will disable the onboard IDE interface automatically. Installing a 8-bit controller card WILL NOT disable the onboard IDE interface. Certain boards lack the onboard VGA support and substitute a PBVGA-16 video card.</p>		

DRAM CONFIGURATION		
Size	Bank 0	Bank 1
512KB	(2) 256K x 9	NONE
1MB	(2) 256K x 9	(2) 256K x 9
2MB	(2) 1M x 9	NONE
2.5MB	(2) 1M x 9	(2) 256K x 9
4MB	(2) 1M x 9	(2) 1M x 9