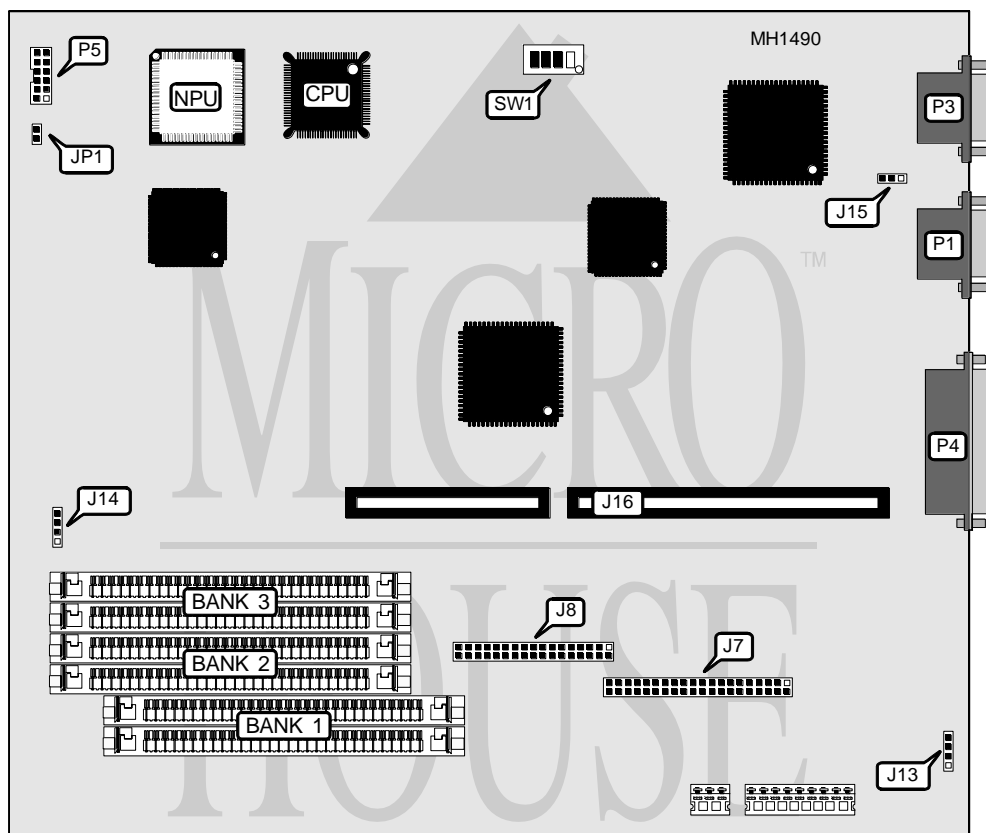


# NEC TECHNOLOGIES, INC.

## POWERMATE 325

<b>Processor</b>	80386SX
<b>Processor Speed</b>	25MHz
<b>Chip Set</b>	Oak
<b>Max. Onboard DRAM</b>	20MB
<b>Cache</b>	None
<b>BIOS</b>	NEC
<b>Dimensions</b>	330mm x 218mm
<b>I/O Options</b>	Floppy drive interface, IDE interface, multifunction connector (PS/2 mouse, PS/2 keyboard, power LED) parallel port, proprietary ISA riser card slot, serial port, VGA port
<b>NPU Options</b>	80387SX



CONNECTIONS			
Purpose	Location	Purpose	Location
IDE interface	J7	Speaker	JP1
Floppy drive interface	J8	Serial port	P1
External battery	J13	VGA port	P3
IDE interface LED	J14	Parallel port	P4
Proprietary EISA riser card slot	J16	Multifunction connector	P5

*Continued on next page . . .*

# NEC TECHNOLOGIES, INC.

## POWERMATE 325

... continued from previous page

USER CONFIGURABLE SETTINGS		
Function	Jumper/Switch	Position
í Flash BIOS programmable via network disabled	J15	pins 1 & 2 closed
Flash BIOS programmable via network enabled	J15	pins 2 & 3 closed
í Onboard video enabled	SW1/1	Off
Onboard video disabled	SW1/1	On
í Floppy interface (J8) enabled	SW1/2	Off
Floppy interface (J8) disabled	SW1/2	On
í System password enabled	SW1/3	Off
System password disabled & cleared	SW1/3	On
í Flash BIOS write enabled	SW1/4	Off
Flash BIOS write disabled	SW1/4	On

DRAM CONFIGURATION				
Size	Bank 0	Bank 1	Bank 2	Bank 3
2MB	(2) 1M x 9	NONE	NONE	NONE
4MB	(2) 1M x 9	(2) 1M x 9	NONE	NONE
6MB	(2) 1M x 9	(2) 1M x 9	(2) 1M x 9	NONE
8MB	(2) 1M x 9	(2) 1M x 9	(2) 1M x 9	(2) 1M x 9
10MB	(2) 1M x 9	NONE	(2) 4M x 9	NONE
12MB	(2) 1M x 9	(2) 1M x 9	(2) 4M x 9	NONE
18MB	(2) 1M x 9	NONE	(2) 4M x 9	(2) 4M x 9
20MB	(2) 1M x 9	(2) 1M x 9	(2) 4M x 9	(2) 4M x 9
Note: Bank 0 is soldered on the main board. 18MB and 20MB configurations require NEC EMS driver.				