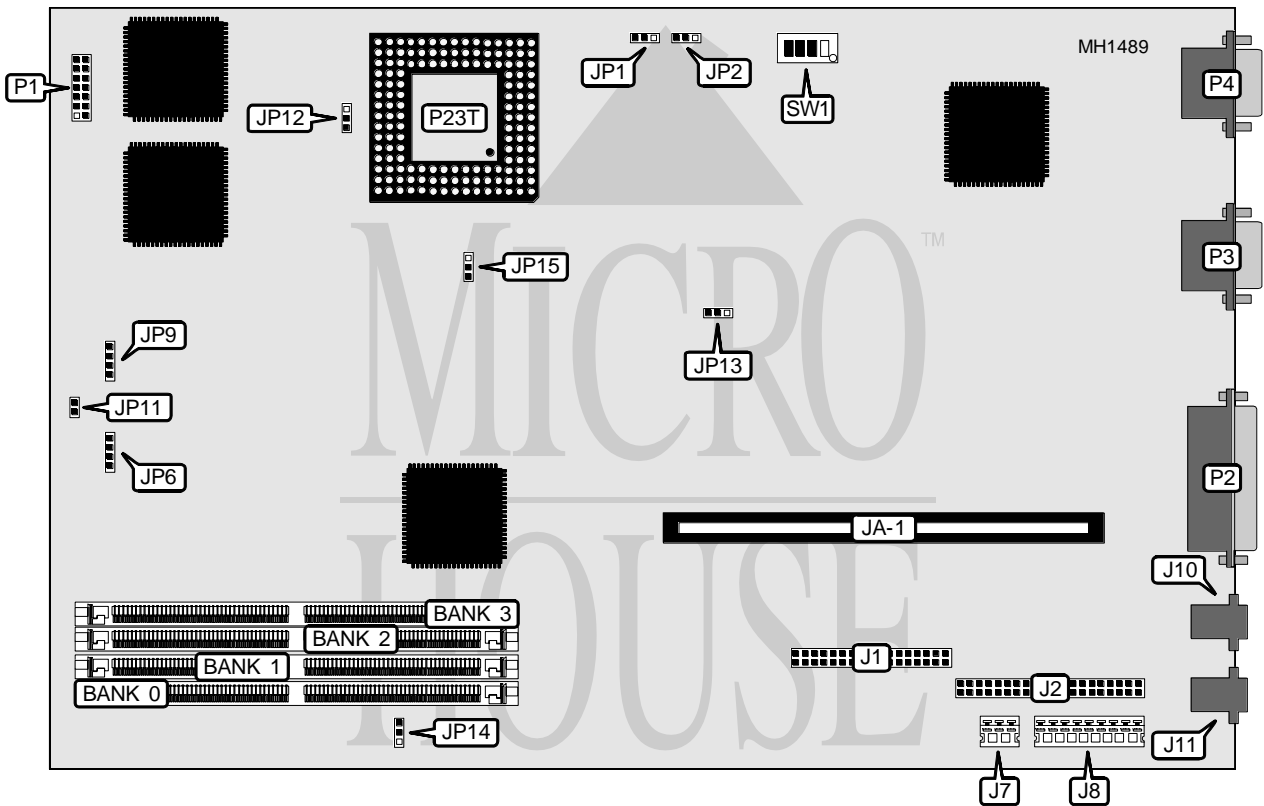


# NEC TECHNOLOGIES, INC.

## READY 425, 433, & 466

<b>Processor</b>	80486SX/80487DX/80486DX/80486DX2
<b>Processor Speed</b>	25/33/50(internal)/66(internal) MHz
<b>Chip Set</b>	C & T
<b>Max. Onboard DRAM</b>	64MB
<b>Cache</b>	None
<b>BIOS</b>	NEC
<b>Dimensions</b>	330mm x 218mm
<b>I/O Options</b>	Fax/modem, floppy drive interface, IDE interface, multi-function connector (PS/2 mouse, PS/2 keyboard, power LED), parallel port, proprietary riser card, serial port, VGA port
<b>NPU Options</b>	None



CONNECTIONS			
Purpose	Location	Purpose	Location
Floppy drive interface	J1	External battery	JP9
IDE interface	J2	Speaker	JP11
Main board power connector	J7 & J8	Multi-function connector	P1
RJ11 modem interface	J10 & J11	Parallel port	P2
Proprietary riser card connection	JA-1	Serial port	P3
IDE interface LED	JP6	VGA port	P4

Continued on next page . . .

# NEC TECHNOLOGIES, INC.

## READY 425, 433, & 466

... continued from previous page

USER CONFIGURABLE SETTINGS		
Function	Jumper/Switch	Position
í Parallel port (P2) select LPT1/IRQ7 (378-37Fh)	JP13	pins 1 & 2 closed
Parallel port (P2) select LPT2/IRQ5 (278-27Fh)	JP13	pins 2 & 3 closed
í Flash BIOS programable via network disabled	JP14	pins 1 & 2 closed
Flash BIOS programable via network enabled	JP14	pins 2 & 3 closed
í Onboard video enabled	SW1/1	Off
Onboard video disabled	SW1/1	On
í Floppy interface (J1) enabled	SW1/2	Off
Floppy interface (J1) disabled	SW1/2	On
í System password enabled	SW1/3	Off
System password disabled & cleared	SW1/3	On
í Flash BIOS write enabled	SW1/4	Off
Flash BIOS write disabled	SW1/4	On

CPU TYPE CONFIGURATION			
Type	JP1	JP2	JP12
í 80486SX PQFP	pins 1 & 2 closed	pins 1 & 2 closed	pins 1 & 2 closed
80486SX PGA	pins 2 & 3 closed	pins 2 & 3 closed	pins 2 & 3 closed
80487SX PGA	pins 1 & 2 closed	pins 1 & 2 closed	pins 1 & 2 closed
80486DX PGA	pins 1 & 2 closed	pins 1 & 2 closed	pins 2 & 3 closed
80486DX2 PGA	pins 1 & 2 closed	pins 1 & 2 closed	pins 2 & 3 closed

CPU SPEED CONFIGURATION	
Clock Speed	JP15
25/50i MHz	pins 1 & 2 closed
33/66i MHz	pins 2 & 3 closed

Continued on next page ...

# NEC TECHNOLOGIES, INC.

## READY 425, 433, & 466

... continued from previous page

DRAM CONFIGURATION				
Size	Bank 0	Bank 1	Bank 2	Bank 3
4MB	(1) 1M x 36	NONE	NONE	NONE
5MB	(1) 1M x 36	(1) 256K x 36	NONE	NONE
6MB	(1) 1M x 36	(1) 256K x 36	(1) 256K x 36	NONE
7MB	(1) 1M x 36	(1) 256K x 36	(1) 256K x 36	(1) 256K x 36
8MB	(1) 1M x 36	(1) 1M x 36	NONE	NONE
9MB	(1) 1M x 36	(1) 1M x 36	(1) 256K x 36	NONE
10MB	(1) 1M x 36	(1) 1M x 36	(1) 256K x 36	(1) 256K x 36
12MB	(1) 1M x 36	(1) 1M x 36	(1) 1M x 36	NONE
13MB	(1) 1M x 36	(1) 1M x 36	(1) 1M x 36	(1) 256K x 36
16MB	(1) 1M x 36	(1) 1M x 36	(1) 1M x 36	(1) 1M x 36
16MB	(1) 4M x 36	NONE	NONE	NONE
17MB	(1) 4M x 36	(1) 256K x 36	NONE	NONE
18MB	(1) 4M x 36	(1) 256K x 36	(1) 256K x 36	NONE
19MB	(1) 4M x 36	(1) 256K x 36	(1) 256K x 36	(1) 256K x 36
20MB	(1) 4M x 36	(1) 1M x 36	NONE	NONE
21MB	(1) 4M x 36	(1) 1M x 36	(1) 256K x 36	NONE
22MB	(1) 4M x 36	(1) 1M x 36	(1) 256K x 36	(1) 256K x 36
24MB	(1) 4M x 36	(1) 1M x 36	(1) 1M x 36	NONE
25MB	(1) 4M x 36	(1) 1M x 36	(1) 1M x 36	(1) 256K x 36
28MB	(1) 4M x 36	(1) 1M x 36	(1) 1M x 36	(1) 1M x 36
32MB	(1) 4M x 36	(1) 4M x 36	NONE	NONE
33MB	(1) 4M x 36	(1) 4M x 36	(1) 256K x 36	NONE
34MB	(1) 4M x 36	(1) 4M x 36	(1) 256K x 36	(1) 256K x 36
36MB	(1) 4M x 36	(1) 4M x 36	(1) 1M x 36	NONE
37MB	(1) 4M x 36	(1) 4M x 36	(1) 1M x 36	(1) 256K x 36
40MB	(1) 4M x 36	(1) 4M x 36	(1) 1M x 36	(1) 1M x 36
48MB	(1) 4M x 36	(1) 4M x 36	(1) 4M x 36	NONE
49MB	(1) 4M x 36	(1) 4M x 36	(1) 4M x 36	(1) 256K x 36
52MB	(1) 4M x 36	(1) 4M x 36	(1) 4M x 36	(1) 1M x 36
64MB	(1) 4M x 36	(1) 4M x 36	(1) 4M x 36	(1) 4M x 36