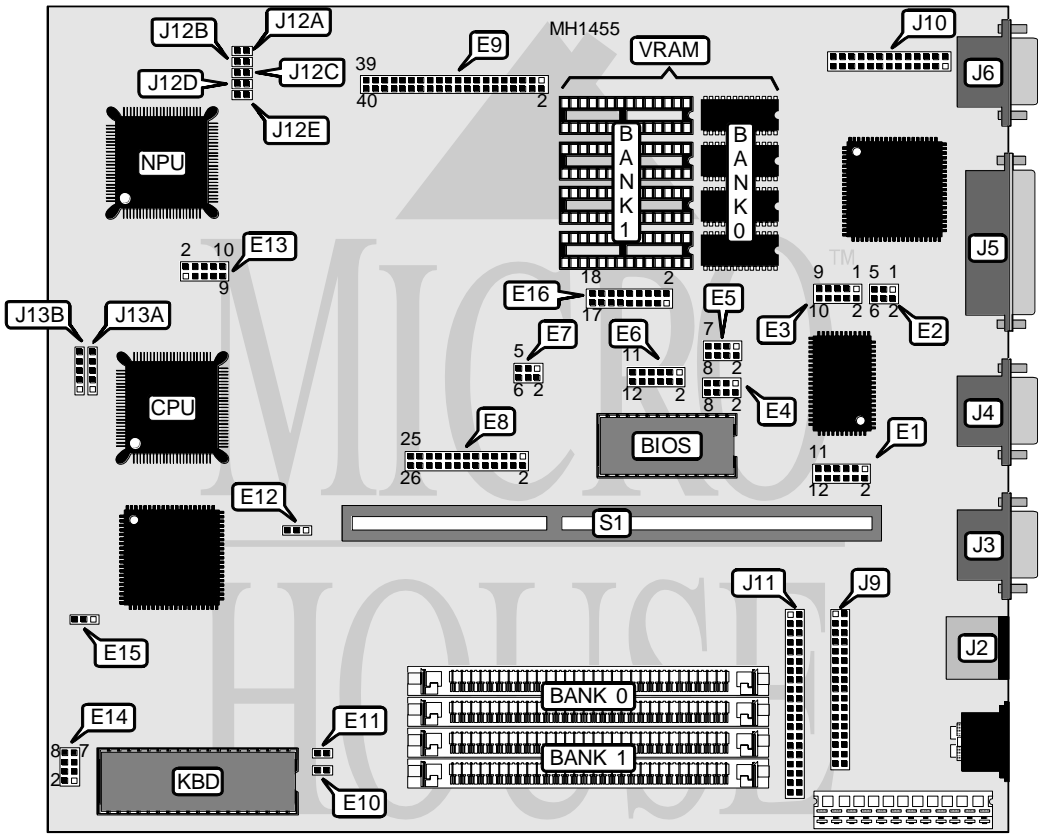


DD & TT ENTERPRISE USA COMPANY DT ESCORT SYSTEM BOARD A

Processor 80386SX/80486SLC
Processor Speed 25/33/40MHz
Chip Set Symphony
Max. Onboard DRAM 16MB
Cache None
BIOS AMI
Dimensions 330mm x 218mm
I/O Options Floppy drive interface, IDE interface, parallel port
 Proprietary EISA riser card slot, PS/2 mouse port
 Serial port (2), VGA port, video feature connector
NPU Options 80387SX/CX487SLC



CONNECTIONS			
Purpose	Location	Purpose	Location
PS/2 mouse port	J2	Reset switch	J12A
Serial port (COM 1)	J3	Turbo switch	J12B
Serial port (COM 2)	J4	Turbo LED	J12C
Parallel port	J5	IDE interface LED	J12D
VGA port	J6	Not used	J12E
Floppy drive interface	J9	Speaker	J13A
Video feature port	J10	Power LED & keylock	J13B
IDE interface	J11	Proprietary riser card slot	S1

Continued on next page . . .

DD & TT ENTERPRISE USA COMPANY

DT ESCORT SYSTEM BOARD A

... continued from previous page

USER CONFIGURABLE SETTINGS		
Function	Jumper	Position
í Floppy drive disabled	E1	pins 1 & 3 closed
Floppy drive enabled	E1	pins 3 & 5 closed
Floppy drive address select 3FO-3F7	E1	pins 7 & 9 closed
Floppy drive address select 370-377	E1	pins 9 & 11 closed
í IDE interface disabled	E1	pins 2 & 4 closed
IDE interface enabled	E1	pins 4 & 6 closed
IDE interface address 3FO-3F7, 1FO-1F7	E1	pins 8 & 10 closed
IDE interface address 370-377, 170-177	E1	pins 20 & 12 closed
í On board video enabled	E2	pins 1 & 2, 3 & 4, 5 & 6 closed
On board video disabled	E2	pins 1 & 2, 3 & 4, 5 & 6 open
í BIOS device select 1MB	E6	pins 1 & 2 closed
BIOS device select 2MB	E6	pins 3 & 5 closed
BIOS device select read only	E6	pins 2 & 4, 7 & 9, 8 & 10 closed
í BIOS device select read/write	E6	pins 4 & 6, 9 & 11, 10 & 12
í Chipset mode select 2x for 40MHz or less	E7	pins 3 & 5 closed
Chipset mode select 1x for true 50MHz only	E7	pins 1 & 3 closed
Chipset mode RDY1 set for 1X mode	E7	pins 4 & 6 closed
Chipset mode RDY2 set for 2X mode	E7	pins 2 & 4 closed
í Chipset mode burst rate select 3-2-2-2	E8	pins 23 & 24 closed
Chipset mode burst rate select 2-1-1-1	E8	pins 23 & 24 open
í Chipset mode write select 0 wait state	E8	pins 25 & 26 closed
Chipset mode write select 1 wait state	E8	pins 25 & 26 open
í PS/2 mouse enable at IRQ12	E10	Closed
PS/2 mouse disable	E10	Open
í CMOS memory normal	E11	Open
CMOS memory clear	E11	Closed
í CPU speed select iOSC/2	E12	pins 2 & 3 closed
CPU speed select iOSC/1	E12	pins 1 & 2 closed
í Factory configured - do not alter	E15	pins 1 & 2 closed
í Factory configured - do not alter	E16/1, 3 & 5	pins 3 & 5 closed
í Factory configured - do not alter	E16/2, 4, & 6	pins 4 & 6 closed
í Factory configured - do not alter	E16/7, 9 & 11	pins 9 & 11 closed
í Factory configured - do not alter	E16/7 & 8	Closed
í Factory configured - do not alter	E16/8 & 10	N/A
í Factory configured - do not alter	E16/11 & 12	Open

Continued on next page ...

DD & TT ENTERPRISE USA COMPANY

DT ESCORT SYSTEM BOARD A

. . . continued from previous page

USER CONFIGURABLE SETTINGS (CONTINUED)		
Function	Jumper	Position
í Factory configured - do not alter	E16/13 & 14	Closed
í Factory configured - do not alter	E16/15 & 16	Closed
í Factory configured - do not alter	E16/17 & 18	Closed
Note: If there is no monochrome hercules card present then the system will automatically assume that address 378h is LPT1 and address 278h is LPT2. pins designated should be in the closed position.		

DRAM CONFIGURATION		
Size	Bank 0	Bank 1
512KB	(2) 256K x 9	NONE
1MB	(2) 256K x 9	(2) 256K x 9
2MB	(2) 1M x 9	NONE
2.5MB	(2) 256K x 9	(2) 1M x 9
4MB	(2) 1M x 9	(2) 1M x 9
8MB	(2) 4M x 9	NONE
8.5MB	(2) 256K x 9	(2) 4M x 9
10MB	(2) 1M x 9	(2) 4M x 9
16MB	(2) 4M x 9	(2) 4M x 9
16MB	(2) 16M x 9	(2) 16M x 9

CPU SPEED CONFIGURATION			
Speed	E14/pins 1 & 2	E14/pins 3 & 4	E14/pins 5 & 6
25MHz	Open	Closed	Closed
33MHz	Open	Closed	Open
40MHz	Open	Open	Closed
25MHz	Open	Closed	Closed
33MHz	Open	Closed	Open

SERIAL PORT A (J3) CONFIGURATION		
COM	I/O Address	E5
í COM1	3F8h	pins 3 & 5, 2 & 4, 7 & 8
COM3	3E8h	pins 1 & 3, 4 & 6, 7 & 8
COM4	2E8h	pins 3 & 5, 4 & 6, 7 & 8
Disabled	N/A	pins 1 & 3, 2 & 4
Note: pins designated should be in the closed position.		

Continued on next page . . .

DD & TT ENTERPRISE USA COMPANY

DT ESCORT SYSTEM BOARD A

... continued from previous page

SERIAL PORT B (J4) CONFIGURATION

COM	I/O Address	E4
COM2	2F8h	pins 3 & 5, 2 & 4, 7 & 8
COM3	3E8h	pins 3 & 5, 4 & 6, 7 & 8
COM4	2E8h	pins 1 & 3, 4 & 6, 7 & 8
Disabled	N/A	pins 1 & 3, 2 & 4

Note: pins designated should be in the closed position.

PARALLEL PORT (J5) CONFIGURATION

COM	IRQ	I/O Address	E3
LPT1	IRQ7	3BCh	pins 3 & 5, 4 & 6, 7 & 8
LPT1	IRQ5	3BCh	pins 3 & 5, 4 & 6, 9 & 10
LPT2	IRQ7	378h	pins 3 & 5, 2 & 6, 7 & 8
LPT2	IRQ5	378h	pins 3 & 5, 2 & 6, 9 & 10
LPT3	IRQ7	278h	pins 1 & 3, 4 & 6, 7 & 8
LPT3	IRQ5	278h	pins 1 & 3, 4 & 6, 9 & 10
Disabled	N/A	N/A	pins 1 & 3, 2 & 4

Note: pins designated should be in the closed position.

VIDEO MEMORY CONFIGURATION

Size	Bank 0	Bank 1
512KB	(4) 44256	NONE
1024KB	(4) 44256	(4) 44256

Note: Bank 0 is permanently soldered onto the board.