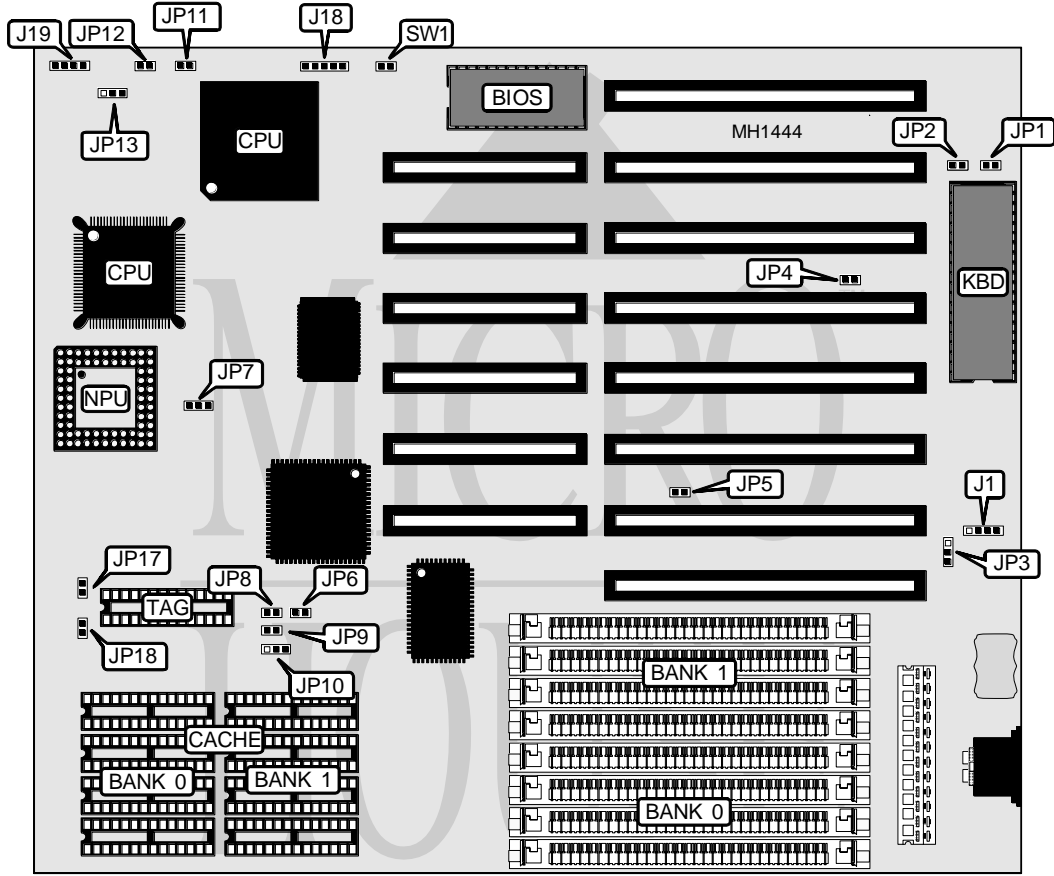


UNIDENTIFIED 386DX CACHE

Processor	80386DX/CX486DLC
Processor Speed	25/33/40MHz
Chip Set	OPTI
Max. onboard DRAM	32MB
Cache	64/128/256KB
BIOS	AMI
Dimensions	240mm x 220mm
I/O Options	None
NPU Options	80387DX/CX487DLC



CONNECTIONS			
Purpose	Location	Purpose	Location
External battery	J1	Turbo LED	JP12
Power LED & keylock	J18	Turbo switch	JP11
Speaker	J19	Reset switch	SW1

Continued on next page . . .

UNIDENTIFIED

386DX CACHE

... continued from previous page

USER CONFIGURABLE SETTINGS

Function	Jumper	Position
ISA bus clock iOSC/4 (10MHz)	JP2	Closed
ISA bus clock iOSC/5 (8MHz)	JP2	Open
CMOS memory normal operation	JP3	pins 2 & 3 closed
CMOS memory clear	JP3	pins 1 & 2 closed
Monitor type select color	JP4	Closed
Monitor type select monochrome	JP4	Open
ATCLK iOSC/2	JP7	pins 1 & 2 closed
ATCLK iOSC/1	JP7	pins 2 & 3 closed

CACHE CONFIGURATION

Size	Cache	Location	TAG
64KB	(8) 8K x 8	Banks 0 & 1	(1) 8K x 8
128KB	(4) 32K x 8	Bank 0	(1) 8K x 8
256KB	(8) 32K x 8	Banks 0 & 1	(1) 32K x 8

CACHE JUMPER CONFIGURATION

Size	JP6	JP8	JP9	JP10	JP17	JP18
64KB	Open	Open	Open	pins 2 & 3	Open	Open
128KB	Closed	Closed	Open	pins 1 & 2	Open	Closed
256KB	Closed	Closed	Closed	pins 2 & 3	Closed	Closed

Note: Pins designated should be in the closed position.

DRAM CONFIGURATION

Size	Bank 0	Bank 1
1MB	(4) 256K x 9	NONE
2MB	(4) 256K x 9	(4) 256K x 9
4MB	(4) 1M x 9	NONE
8MB	(4) 1M x 9	(4) 1M x 9
16MB	(4) 4M x 9	NONE
20MB	(4) 4M x 9	(4) 1M x 9
32MB	(4) 4M x 9	(4) 4M x 9

CPU TYPE CONFIGURATION

CPU	JP1	JP5	JP13
80386DX	Open	Open	Open
CX486DLC	Open	Closed	Closed