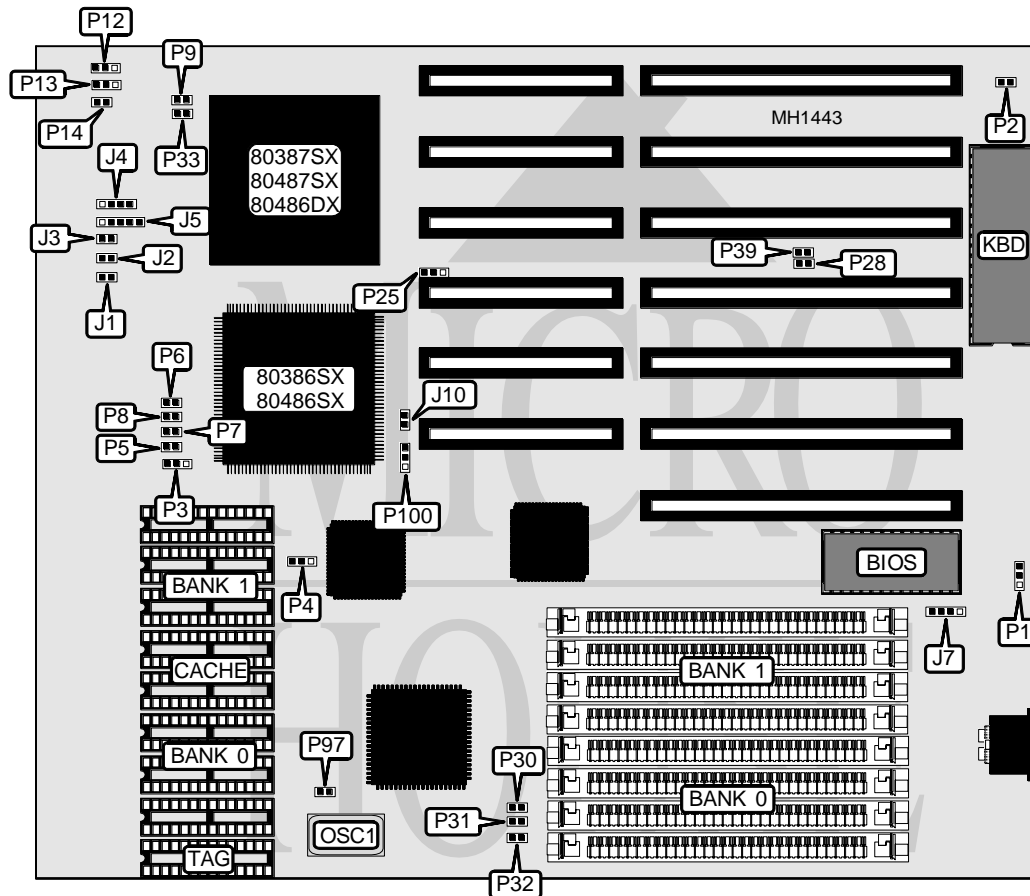


AUVA COMPUTER, INC.
TAM33-P8/TAM40-P8/CPM25-P8/CPM33-P8
CAM33-P-8/CAM50-P8

Processor 80386DX/80486SX/80487SX/80486DX
Processor Speed 25/33/40/50MHz
Chip Set OPTI
Max. onboard DRAM 32MB
SRAM Cache 64/128/256KB
BIOS AMI
Dimensions 235mm x 220mm
I/O Options None
NPU Options 80387



CONNECTIONS			
Purpose	Location	Purpose	Location
Reset switch	J1	Speaker	J4
Turbo switch	J2	Power LED & keylock	J5
Turbo LED	J3	External battery	J7

Continued on next page . . .

AUVA COMPUTER, INC.

TAM33-P8/TAM40-P8/CPM25-P8/CPM33-P8

CAM33-P-8/CAM50-P8

... continued from previous page

USER CONFIGURABLE SETTINGS		
Function	Jumper	Position
í CMOS memory normal operation	P1	pins 2 & 3 closed
CMOS memory clear	P1	pins 1 & 2 closed
í Monitor type select color	P2	Closed
Monitor type select monochrome	P2	Open
í Factory configured - do not alter	P28	Open

DRAM CONFIGURATION		
Size	Bank 0	Bank 1
1MB	(4) 256K x 9	NONE
2MB	(4) 256K x 9	(4) 256K x 9
4MB	(4) 1M x 9	NONE
5MB	(4) 256K x 9	(4) 1M x 9
8MB	(4) 1M x 9	(4) 1M x 9
16MB	(4) 4M x 9	NONE
20MB	(4) 1M x 9	(4) 4M x 9
32MB	(4) 4M x 9	(4) 4M x 9

CACHE CONFIGURATION			
Size	Bank 0	Bank 1	TAG
64KB	(4) 8K x 8	(4) 8K x 8	(1) 8K x 8
128KB	(4) 32K x 8	NONE	(1) 8K x 8
256KB	(4) 32K x 8	(4) 32K x 8	(1) 32K x 8

CACHE JUMPER CONFIGURATION						
Size	P3	P5	P6	P7	P8	P9
64KB	pins 2 & 3 closed	Open	Open	Open	Open	Open
128KB	pins 1 & 2 closed	Open	Open	Closed	Closed	Closed
256KB	pins 2 & 3 closed	Closed	Closed	Closed	Closed	Closed

Continued on next page ...

AUVA COMPUTER, INC.

TAM33-P8/TAM40-P8/CPM25-P8/CPM33-P8

CAM33-P-8/CAM50-P8

... continued from previous page

80486 CPU CONFIGURATION			
CPU	P12	P13	P14
80486SX	pins 2 & 3 closed	Open	Open
80487SX	pins 1 & 2 closed	pins 2 & 3 closed	Closed
80486DX	pins 1 & 2 closed	pins 1 & 2 closed	Closed

CPU SPEED CONFIGURATION							
CPU	Speed	OSC1	P30	P31	P32	P39	P97
80486SX	25MHz	50MHz	Closed	Open	Closed	N/A	Open
80386DX	33MHz	33MHz	Closed	Closed	Open	Closed	Open
80486DX	33MHz	66MHz	Closed	Closed	Open	N/A	Closed
80386DX	40MHz	80MHz	Open	Open	Closed	Open	Closed
80486DX	50MHz	50MHz	Closed	Closed	Open	N/A	Closed

CPU TYPE CONFIGURATION					
CPU	J10	P4	P25	P33	P100
80386	Closed	pins 1 & 2	pins 2 & 3	Closed	pins 1 & 2
80486	Open	pins 2 & 3	pins 1 & 2	Open	pins 2 & 3

Note: Pins designated should be in the closed position.