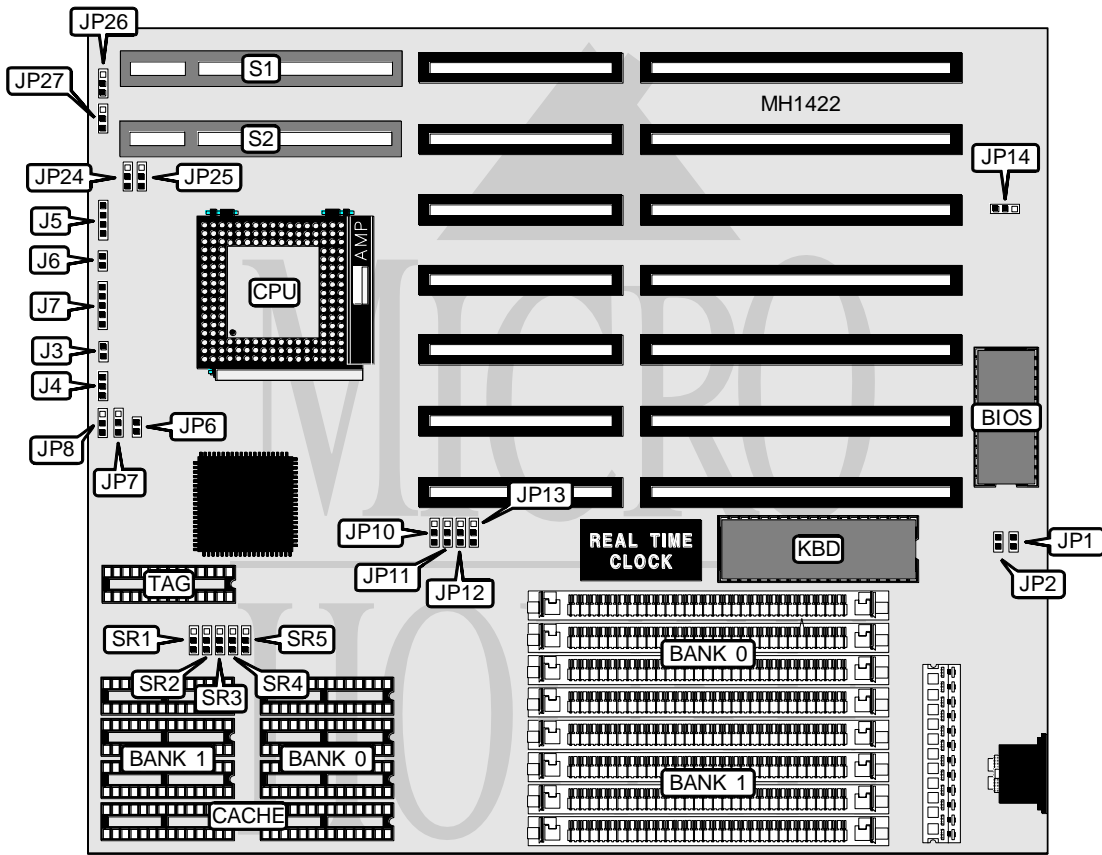


BCM ADVANCED RESEARCH, INC.

LX400A/P VLB

Processor	80486SX/80487SX/80486DX/80486DX2
Processor Speed	20/25/33/50(internal)/50/66(internal)
Chip Set	SIS
Max. Onboard DRAM	32MB
SRAM Cache	64/128/256KB
BIOS	AMI
Dimensions	254mm x 218mm
I/O Options	32-bit VESA local bus slot (2)
NPU Options	None



CONNECTIONS			
Purpose	Location	Purpose	Location
Turbo LED	J3	Power LED & keylock	J7
Turbo switch	J4	32-bit VESA local bus slot	S1
Speaker	J5	32-bit VESA local bus slot	S2
Reset switch	J6		

32-BIT VESA LOCAL BUS SLOT CONFIGURATION				
CPU Speed	JP24	JP25	JP26	JP27
≤ 33MHz	pins 1 & 2 closed	pins 1 & 2 closed	pins 1 & 2 closed	pins 1 & 2 closed
> 33MHz	pins 2 & 3 closed	pins 2 & 3 closed	pins 2 & 3 closed	pins 2 & 3 closed

Continued on next page . . .

BCM ADVANCED RESEARCH, INC.

LX400A/P VLB

... continued from previous page

USER CONFIGURABLE SETTINGS		
Function	Jumper/Switch	Position
í Factory configured - do not alter	JP1	open
í Monitor type select color	JP2	closed
Monitor type select monochrome	JP2	open
í Power good signal detect from power supply	JP14	pins 1 & 2 closed
Power good signal detect from board	JP14	pins 2 & 3 closed

SRAM CONFIGURATION			
Size	Cache	Location	TAG
64KB	(8) 8K x 8	Banks 0 & 1	(1) 8K x 8
128KB	(4) 32K x 8	Bank 0	(1) 8K x 8
256KB	(8) 32K x 8	Banks 0 & 1	(2) 32K x 8

SRAM JUMPER CONFIGURATION					
Size	SR1	SR2	SR3	SR4	SR5
64KB	pins 2 & 3	pins 2 & 3	pins 1 & 2	pins 1 & 2	pins 1 & 2
128KB	pins 1 & 2	pins 1 & 2	pins 2 & 3	pins 2 & 3	pins 1 & 2
256KB	pins 2 & 3	pins 2 & 3	pins 2 & 3	pins 2 & 3	pins 2 & 3

Note: Pins designated should be in the closed position.

CPU SPEED SELECTION				
Speed	JP10	JP11	JP12	JP13
20MHz	pins 2 & 3	pins 2 & 3	pins 2 & 3	pins 2 & 3
25MHz/50(internal)	pins 2 & 3	pins 2 & 3	pins 1 & 2	pins 1 & 2
33MHz/66(internal)	pins 1 & 2	pins 2 & 3	pins 1 & 2	pins 1 & 2
50MHz	pins 1 & 2	pins 1 & 2	pins 1 & 2	pins 1 & 2

Note: Pins designated should be in the closed position.

CPU TYPE CONFIGURATION			
CPU type	JP6	JP7	JP8
80486SX	open	open	pins 2 & 3 closed
80487SX	closed	pins 2 & 3 closed	pins 1 & 2 closed
80486DX/DX2	closed	pins 1 & 2 closed	pins 1 & 2 closed

DRAM CONFIGURATION		
Size	Bank 0	Bank 1
1MB	(4) 256K x 9	NONE
2MB	(4) 256K x 9	(4) 256K x 9
4MB	(4) 1M x 9	NONE
8MB	(4) 1M x 9	(4) 1M x 9
16MB	(4) 4M x 9	NONE
20MB	(4) 1M x 9	(4) 4M x 9
32MB	(4) 4M x 9	(4) 4M x 9