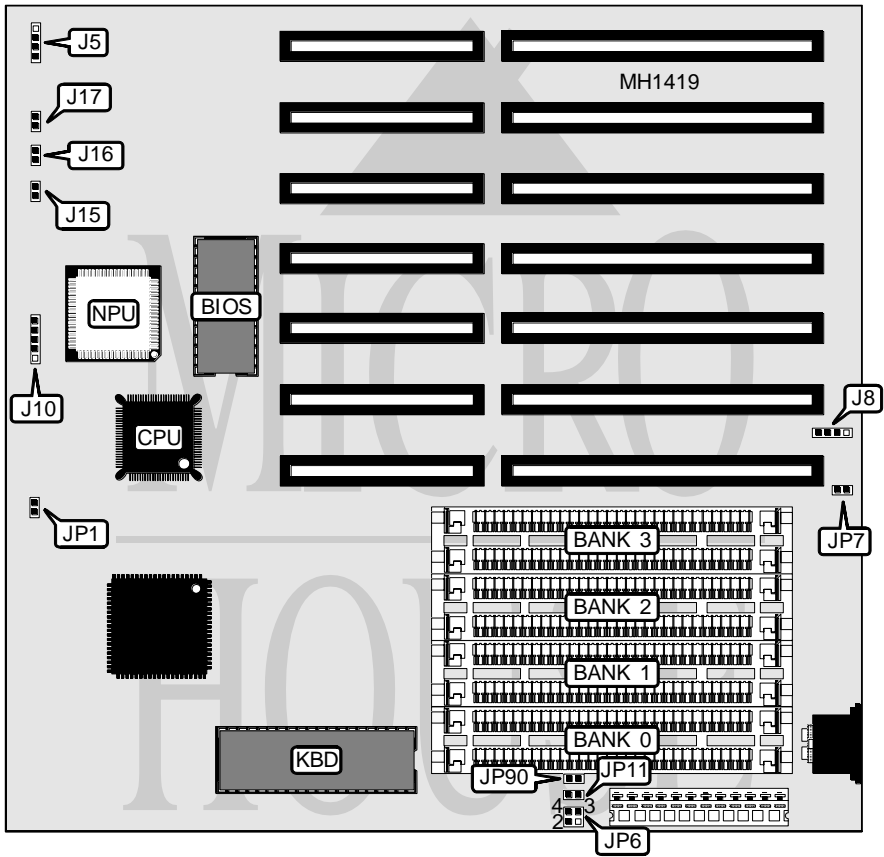


MAGITRONICS

A - B 3 0 7

| | |
|--------------------------|---------------|
| Processor | 80386SX |
| Processor Speed | 25MHz |
| Chip Set | VLSI SCAMP |
| Max. Onboard DRAM | 16MB |
| SRAM Cache | None |
| BIOS | AMI/Quadtel |
| Dimensions | 218mm x 218mm |
| I/O Options | None |
| NPU Options | 80387SX |



| CONNECTIONS | | | |
|---------------------|----------|--------------|----------|
| Purpose | Location | Purpose | Location |
| Speaker | J5 | Reset switch | J15 |
| External battery | J8 | Turbo switch | J16 |
| Power LED & keylock | J10 | Turbo LED | J17 |

Continued on next page . . .

MAGITRONICS

A - B 3 0 7

... continued from previous page

| USER CONFIGURABLE SETTINGS | | |
|----------------------------------|--------|-------------------|
| Function | Jumper | Position |
| í Pipeline mode enabled | JP1 | closed |
| Pipeline mode disabled | JP1 | open |
| í CMOS memory normal operation | JP6 | pins 1 & 2 closed |
| CMOS memory clear | JP6 | pins 3 & 4 closed |
| í Battery select internal | JP7 | closed |
| Battery select external | JP7 | open |
| í Monitor type select monochrome | JP11 | open |
| Monitor type select color | JP11 | closed |
| í Parity checking enabled | JP90 | closed |
| Parity checking disabled | JP90 | open |

| DRAM CONFIGURATION | | | | |
|--------------------|--------------|--------------|--------------|--------------|
| Size | Bank 0 | Bank 1 | Bank 2 | Bank 3 |
| 512KB | (2) 256K x 9 | NONE | NONE | NONE |
| 1MB | (2) 256K x 9 | (2) 256K x 9 | NONE | NONE |
| 1.5MB | (2) 256K x 9 | (2) 256K x 9 | (2) 256K x 9 | NONE |
| 2MB | (2) 256K x 9 | (2) 256K x 9 | (2) 256K x 9 | (2) 256K x 9 |
| 2MB | (2) 1M x 9 | NONE | NONE | NONE |
| 3MB | (2) 256K x 9 | (2) 1M x 9 | NONE | NONE |
| 4MB | (2) 1M x 9 | (2) 1M x 9 | NONE | NONE |
| 5MB | (2) 256K x 9 | (2) 256K x 9 | (2) 1M x 9 | (2) 1M x 9 |
| 6MB | (2) 1M x 9 | (2) 1M x 9 | (2) 1M x 9 | NONE |
| 8MB | (2) 1M x 9 | (2) 1M x 9 | (2) 1M x 9 | (2) 1M x 9 |
| 8MB | (2) 4M x 9 | NONE | NONE | NONE |
| 12MB | (2) 1M x 9 | (2) 1M x 9 | (2) 4M x 9 | NONE |
| 16MB | (2) 4M x 9 | (2) 4M x 9 | (2) 4M x 9 | (2) 4M x 9 |