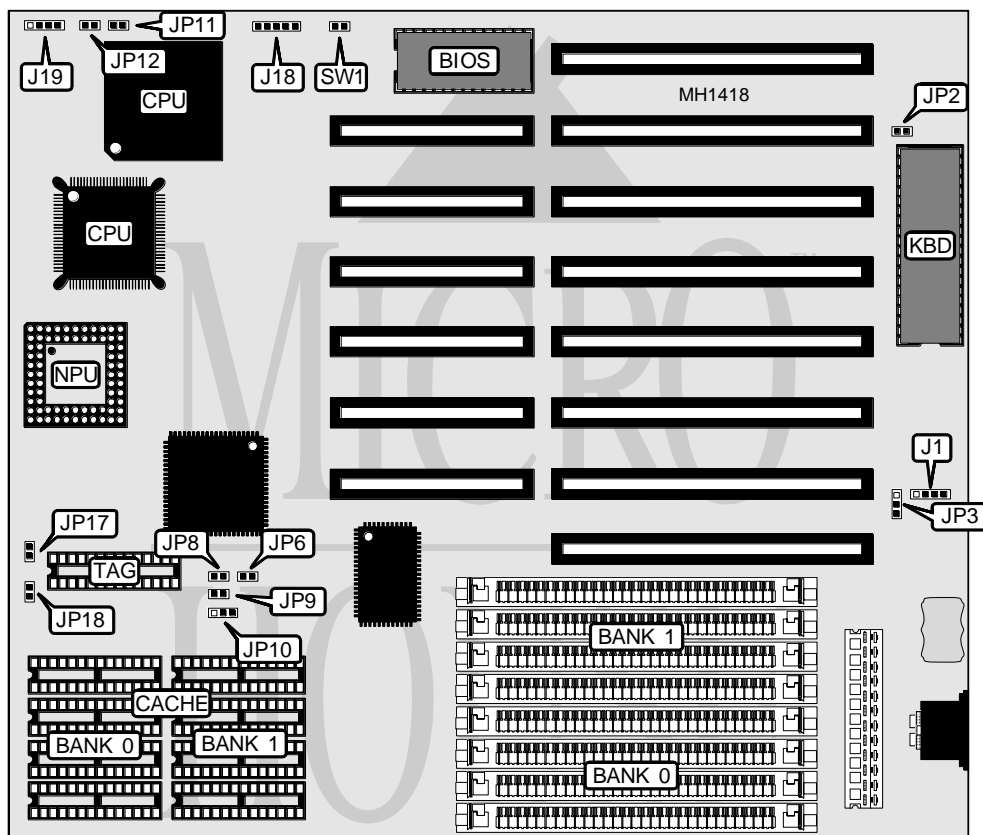


# MAGITRONICS

## A - B 3 4 5 G / A - B 3 4 5 H

|                   |               |
|-------------------|---------------|
| Processor         | 80386DX       |
| Processor Speed   | 40MHz         |
| Chip Set          | OPTi          |
| Max. Onboard DRAM | 32MB          |
| SRAM Cache        | 64/128/256KB  |
| BIOS              | AMI           |
| Dimensions        | 330mm x 218mm |
| I/O Options       | None          |
| NPU Options       | 80387         |



| CONNECTIONS         |          |              |          |
|---------------------|----------|--------------|----------|
| Purpose             | Location | Purpose      | Location |
| External battery    | J1       | Turbo LED    | JP12     |
| Power LED & keylock | J18      | Turbo switch | JP11     |
| Speaker             | J19      | Reset switch | SW1      |

Continued on next page . . .

## MAGITRONICS

## A - B 3 4 5 G / A - B 3 4 5 H

... continued from previous page

| USER CONFIGURABLE SETTINGS     |        |                   |
|--------------------------------|--------|-------------------|
| Function                       | Jumper | Position          |
| í ISA bus clock iOSC/4 (10MHz) | JP2    | closed            |
| ISA bus clock iOSC/5 (8MHz)    | JP2    | open              |
| í CMOS memory normal operation | J3     | pins 2 & 3 closed |
| CMOS memory clear              | J3     | pins 1 & 2 closed |
| í Monitor type select color    | J4     | closed            |
| Monitor type select monochrome | J4     | open              |

| SRAM JUMPER CONFIGURATION |        |        |        |            |        |        |
|---------------------------|--------|--------|--------|------------|--------|--------|
| Size                      | JP6    | JP8    | JP9    | JP10       | JP17   | JP18   |
| 64KB                      | open   | open   | open   | pins 2 & 3 | open   | open   |
| 128KB                     | closed | closed | open   | pins 1 & 2 | open   | closed |
| 256KB                     | closed | closed | closed | pins 2 & 3 | closed | closed |

| SRAM CONFIGURATION |             |             |             |
|--------------------|-------------|-------------|-------------|
| Size               | Cache       | Location    | TAG         |
| 64KB               | (8) 8K x 8  | Banks 0 & 1 | (1) 8K x 8  |
| 128KB              | (4) 32K x 8 | Bank 0      | (1) 8K x 8  |
| 256KB              | (8) 32K x 8 | Banks 0 & 1 | (1) 32K x 8 |

| DRAM CONFIGURATION |              |              |
|--------------------|--------------|--------------|
| Size               | Bank 0       | Bank 1       |
| 1MB                | (4) 256K x 9 | NONE         |
| 2MB                | (4) 256K x 9 | (4) 256K x 9 |
| 4MB                | (4) 1M x 9   | NONE         |
| 8MB                | (4) 1M x 9   | (4) 1M x 9   |
| 16MB               | (4) 4M x 9   | NONE         |
| 20MB               | (4) 4M x 9   | (4) 1M x 9   |
| 32MB               | (4) 4M x 9   | (4) 4M x 9   |