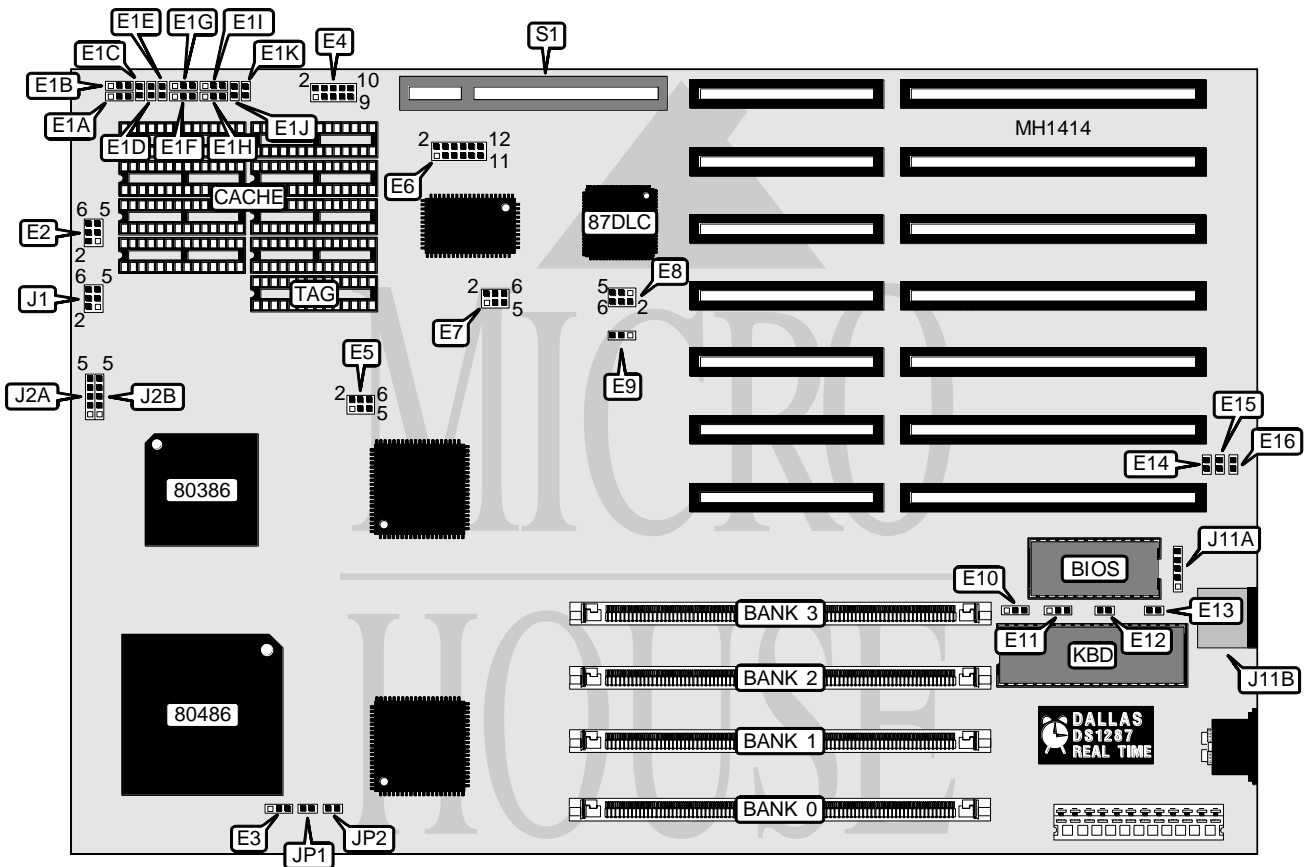


DD & TT ENTERPRISE USA COMPANY

DT-LB134 (36-BIT SIMM VERSION)

| | |
|--------------------------|--|
| Processor | 80386DX/CX486DLC/80486SX/80486DX/80486DX2/ODP586SX |
| Processor Speed | 20/25/33/40/50(internal)/50/66(internal)MHz |
| Chip Set | Symphony |
| Max. Onboard DRAM | 64MB |
| SRAM Cache | 64/256KB |
| BIOS | AMI |
| Dimensions | 330mm x 218mm |
| I/O Options | PS/2 mouse, 32-bit VESA local bus slot |
| NPU Options | CX87DLC/80387DX |



| CONNECTIONS | | | |
|---------------------|---------------|-----------------------|----------------|
| Purpose | Location | Purpose | Location |
| Turbo LED | J1/pins 1 & 2 | Speaker | J2B/pins 1 & 4 |
| Turbo switch | J1/pins 3 & 4 | Mouse port header | J11A |
| Reset switch | J1/pins 5 & 6 | PS/2 mouse port | J11B |
| Power LED & keylock | J2A | 32-bit VESA local bus | S1 |

Continued on next page . . .

DD & TT ENTERPRISE USA COMPANY

DT-LB134 (36-BIT SIMM VERSION)

... continued from previous page

| USER CONFIGURABLE SETTINGS | | |
|---------------------------------------|----------------|----------|
| Function | Jumper | Position |
| Factory configured-do not alter | E2/pins 1 & 2 | unknown |
| Factory configured-do not alter | E2/pins 3 & 4 | unknown |
| í Monitor type select color | E2/pins 5 & 6 | closed |
| Monitor type select monochrome | E2/pins 5 & 6 | open |
| ATCLK iOSC/2 | E7/1-3, 4-6 | closed |
| ATCLK iOSC/1 | E7/3-5, 2-4 | closed |
| í Mouse port enabled | E12 | closed |
| Mouse port disabled | E12 | open |
| í CMOS memory normal operation | E13 | open |
| CMOS memory clear | E13 | closed |
| í Onboard speaker enabled | J2B/pins 1 & 2 | closed |
| Onboard speaker disabled | J2B/pins 1 & 2 | open |
| Burst mode 3-2-2-2 | JP1 | closed |
| Burst mode 2-1-1-1 | JP1 | open |
| Cache wait state select 0 wait states | JP2 | closed |
| Cache wait state select 1 wait state | JP2 | open |

| SRAM JUMPER CONFIGURATION | | |
|---------------------------|-------------------|-------------------|
| Jumper | 64K | 256K |
| E1A | pins 2 & 3 closed | pins 1 & 2 closed |
| E1B | pins 2 & 3 closed | pins 1 & 2 closed |
| E1C | open | closed |
| E1D | open | closed |
| E1E | open | closed |
| E1F | pins 1 & 2 closed | pins 1 & 2 closed |
| E1G | pins 1 & 2 closed | pins 1 & 2 closed |
| E1H | pins 1 & 2 closed | pins 1 & 2 closed |
| E1I | pins 1 & 2 closed | pins 1 & 2 closed |
| E1J | closed | closed |
| E1K | closed | closed |

| SRAM CONFIGURATION | | |
|--------------------|-------------|-------------|
| Size | Cache | TAG |
| 64KB | (8) 8K x 8 | (1) 8K x 4 |
| 256KB | (8) 32K x 8 | (1) 32K x 4 |

Continued on next page . . .

DD & TT ENTERPRISE USA COMPANY

DT-LB134 (36-BIT SIMM VERSION)

... continued from previous page

| DRAM CONFIGURATION | | | | |
|--------------------|-----------|-----------|-----------|-----------|
| Size | Bank 0 | Bank 1 | Bank 2 | Bank3 |
| 1MB | 256K x 36 | NONE | NONE | NONE |
| 2MB | 256K x 36 | 256K x 36 | NONE | NONE |
| 3MB | 256K x 36 | 256K x 36 | 256K x 36 | NONE |
| 4MB | 256K x 36 | 256K x 36 | 256K x 36 | 256K x 36 |
| 4MB | 1MB x 36 | NONE | NONE | NONE |
| 5MB | 1MB x 36 | 256K x 36 | NONE | NONE |
| 7MB | 1MB x 36 | 256K x 36 | 256K x 36 | 256K x 36 |
| 8MB | 1MB x 36 | 1MB x 36 | NONE | NONE |
| 9MB | 1MB x 36 | 1MB x 36 | 256K x 36 | NONE |
| 10MB | 1MB x 36 | 1MB x 36 | 256K x 36 | 256K x 36 |
| 12MB | 1MB x 36 | 1MB x 36 | 1MB x 36 | NONE |
| 16MB | 1MB x 36 | 1MB x 36 | 1MB x 36 | 1MB x 36 |
| 16MB | 4MB x 36 | NONE | NONE | NONE |
| 17MB | 4MB x 36 | 256K x 36 | NONE | NONE |
| 19MB | 4MB x 36 | 256K x 36 | 256K x 36 | 256K x 36 |
| 20MB | 4MB x 36 | 1MB x 36 | NONE | NONE |
| 28MB | 4MB x 36 | 1MB x 36 | 1MB x 36 | 1MB x 36 |
| 32MB | 4MB x 36 | 4MB x 36 | NONE | NONE |
| 34MB | 4MB x 36 | 4MB x 36 | 256K x 36 | 256K x 36 |
| 40MB | 4MB x 36 | 4MB x 36 | 1MB x 36 | 1MB x 36 |
| 64MB | 4MB x 36 | 4MB x 36 | 4MB x 36 | 4MB x 36 |

| CPU TYPE CONFIGURATION | | | | | | |
|------------------------|-------------|------------------|---------|------------------|---------|---------|
| Type | E3 | E4 | E5 | E6 | E7 | E8 |
| 80386DX 33 | open | 3&4,9&10 | 1&3,4&6 | 3&4,9&11,10&12, | 1&3,4&6 | 3&4 |
| 80386DX 40 | open | 3&4,7&8,9&10 | 1&3,4&6 | 3&4,9&11,10&12 | 1&3,4&6 | 5&6 |
| CX486DLC 33 | open | 3&4,9&10 | 1&3,4&6 | 3&4,9&11,10&12 | 1&3,4&6 | 3&4 |
| CX486DLC 40 | open | 3&4,7&8,9&10 | 1&3,4&6 | 3&4,9&11,10&12 | 1&3,4&6 | 5&6 |
| 80486SX 20 | 2&3 | 1&2,9&10 | 3&5,4&6 | 1&2,5&6,7&9,8&10 | 1&3,4&6 | 1&2 |
| 80486SX 25 | 2&3 | 1&2,9&10 | 3&5,4&6 | 1&2,5&6,7&9,8&10 | 1&3,4&6 | 3&4,5&6 |
| 80486SX 33 | 2&3 | 1&2,9&10 | 3&5,4&6 | 1&2,5&6,7&9,8&10 | 1&3,4&6 | 3&4 |
| 80486DX 33 | 1&2,3&4,5&6 | 1&2,9&10 | 3&5,4&6 | 1&2,5&6,7&9,8&10 | 1&3,4&6 | 3&4 |
| 80486DX2 50 | 1&2,3&4,5&6 | 1&2,9&10 | 3&5,4&6 | 1&2,5&6,7&9,8&10 | 1&3,4&6 | 3&4,5&6 |
| 80486DX 50 | 1&2,3&4,5&6 | 1&2,5&6,7&8,9&10 | 1&3,2&4 | 1&2,5&6,7&9,8&10 | 3&5,2&4 | 3&4,5&6 |
| 80486DX2 66 | 1&2,3&4,5&6 | 1&2,9&10 | 3&5,4&6 | 1&2,5&6,7&9,8&10 | 1&3,4&6 | 3&4 |

Notes: Pins indicated should be in the closed position.

Early versions of the board (model DT-LB133) do not support the 80486 series processor.