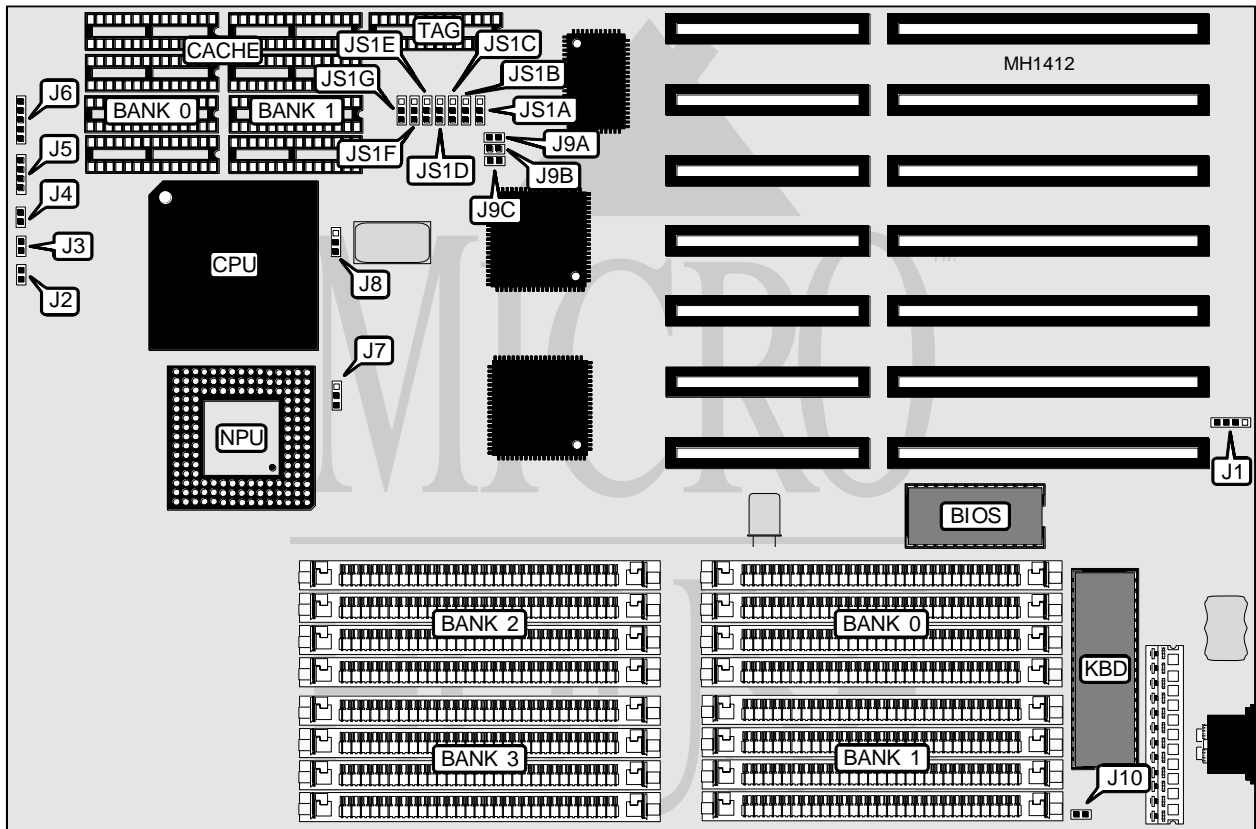


ZETA INDUSTRIAL CO., LTD.

PETER 486DX-3350 (80486DX-3350)

| | |
|--------------------------|----------------------------------|
| Processor | 80486SX/80487SX/80486DX/80486DX2 |
| Processor Speed | 33/50(internal)/50MHz |
| Chip Set | Symphony |
| Max. Onboard DRAM | 64MB |
| SRAM Cache | 64/128/256K |
| BIOS | AMI/Award |
| Dimensions | 330mm x 218mm |
| I/O Options | None |
| NPU Options | 4167 |



| CONNECTIONS | | | |
|------------------|----------|---------------------|----------|
| Purpose | Location | Purpose | Location |
| External battery | J1 | Reset switch | J4 |
| Turbo LED | J2 | Speaker | J5 |
| Turbo switch | J3 | Power LED & keylock | J6 |

Continued on next page . . .

ZETA INDUSTRIAL CO., LTD.

PETER 486DX-3350 (80486DX-3350)

... continued from previous page

| USER CONFIGURABLE SETTINGS | | |
|---|--------|-------------------|
| Function | Jumper | Position |
| í CPU type select 80486DX2, 80486DX, or 80487SX | J8 | pins 2 & 3 closed |
| CPU tpye select 80486SX | J8 | pins 1 & 2 closed |
| í Monitor type select color | J10 | closed |
| Monitor type select monochrome | J10 | open |

| CPU SPEED CONFIGURATION | | | | |
|-------------------------|-------------------|--------|--------|--------|
| CPU Speed | J7 | J9A | J9B | J9C |
| 33MHz | pins 1 & 2 closed | open | closed | open |
| 50 (internal) MHz | pins 1 & 2 closed | open | closed | open |
| 50MHz | pins 2 & 3 closed | closed | open | closed |

| SRAM JUMPER CONFIGURATION | | | | | | | |
|---------------------------|------------|------------|------------|------------|------------|------------|------------|
| Size | JS1G | JS1F | JS1E | JS1D | JS1C | JS1B | JS1A |
| 64KB | pins 1 & 2 | pins 1 & 2 | pins 1 & 2 | pins 1 & 2 | pins 1 & 2 | pins 1 & 2 | pins 1 & 2 |
| 128KB | pins 1 & 2 | pins 1 & 2 | pins 2 & 3 | pins 2 & 3 | pins 2 & 3 | pins 2 & 3 | pins 2 & 3 |
| 256KB | pins 2 & 3 | pins 2 & 3 | pins 2 & 3 | pins 2 & 3 | pins 1 & 2 | pins 1 & 2 | pins 1 & 2 |

Note: Pins designated should be in the closed position.

| SRAM CONFIGURATION | | | |
|--------------------|-------------|-------------|-------------|
| Size | Cache | Location | TAG |
| 64KB | (8) 8K x 8 | Banks 0 & 1 | (1) 8K x 8 |
| 128KB | (4) 32K x 8 | Bank 0 | (1) 32K x 8 |
| 256KB | (8) 32K x 8 | Banks 0 & 1 | (1) 32K x 8 |

Continued on next page ...

ZETA INDUSTRIAL CO., LTD.

PETER 486DX-3350 (80486DX-3350)

... continued from previous page

| DRAM CONFIGURATION | | | | |
|--------------------|--------------|--------------|--------------|------------|
| Size | Bank 0 | Bank 1 | Bank 2 | Bank 3 |
| 1MB | (4) 256K x 9 | NONE | NONE | NONE |
| 2MB | (4) 256K x 9 | (4) 256K x 9 | NONE | NONE |
| 2MB | (4) 512K x 9 | NONE | NONE | NONE |
| 4MB | (4) 256K x 9 | (4) 256K x 9 | (4) 512K x 9 | NONE |
| 4MB | (4) 512K x 9 | (4) 512K x 9 | NONE | NONE |
| 4MB | (4) 1M x 9 | NONE | NONE | NONE |
| 6MB | (4) 256K x 9 | (4) 256K x 9 | (4) 1M x 9 | NONE |
| 6MB | (4) 512K x 9 | (4) 1M x 9 | NONE | NONE |
| 8MB | (4) 256K x 9 | (4) 256K x 9 | (4) 512K x 9 | (4) 1M x 9 |
| 8MB | (4) 512K x 9 | (4) 512K x 9 | (4) 1M x 9 | NONE |
| 8MB | (4) 1M x 9 | (4) 1M x 9 | NONE | NONE |
| 8MB | (4) 2M x 9 | NONE | NONE | NONE |
| 10MB | (4) 256K x 9 | (4) 256K x 9 | (4) 1M x 9 | (4) 1M x 9 |
| 12MB | (4) 512K x 9 | (4) 512K x 9 | (4) 1M x 9 | (4) 1M x 9 |
| 12MB | (4) 1M x 9 | (4) 1M x 9 | (4) 1M x 9 | NONE |
| 16MB | (4) 1M x 9 | (4) 1M x 9 | (4) 1M x 9 | (4) 1M x 9 |
| 16MB | (4) 2M x 9 | (4) 2M x 9 | NONE | NONE |
| 16MB | (4) 4M x 9 | NONE | NONE | NONE |
| 18MB | (4) 256K x 9 | (4) 256K x 9 | (4) 4M x 9 | NONE |
| 18MB | (4) 512K x 9 | (4) 4M x 9 | NONE | NONE |
| 20MB | (4) 512K x 9 | (4) 512K x 9 | (4) 4M x 9 | NONE |
| 20MB | (4) 1M x 9 | (4) 4M x 9 | NONE | NONE |
| 24MB | (4) 512K x 9 | (4) 512K x 9 | (4) 1M x 9 | (4) 4M x 9 |
| 24MB | (4) 1M x 9 | (4) 1M x 9 | (4) 4M x 9 | NONE |
| 24MB | (4) 2M x 9 | (4) 2M x 9 | (4) 2M x 9 | NONE |
| 32MB | (4) 2M x 9 | (4) 2M x 9 | (4) 2M x 9 | (4) 2M x 9 |
| 32MB | (4) 4M x 9 | (4) 4M x 9 | NONE | NONE |
| 36MB | (4) 512K x 9 | (4) 512K x 9 | (4) 4M x 9 | (4) 4M x 9 |
| 36MB | (4) 1M x 9 | (4) 4M x 9 | (4) 4M x 9 | NONE |
| 40MB | (4) 1M x 9 | (4) 1M x 9 | (4) 4M x 9 | (4) 4M x 9 |
| 48MB | (4) 4M x 9 | (4) 4M x 9 | (4) 4M x 9 | NONE |
| 64MB | (4) 4M x 9 | (4) 4M x 9 | (4) 4M x 9 | (4) 4M x 9 |