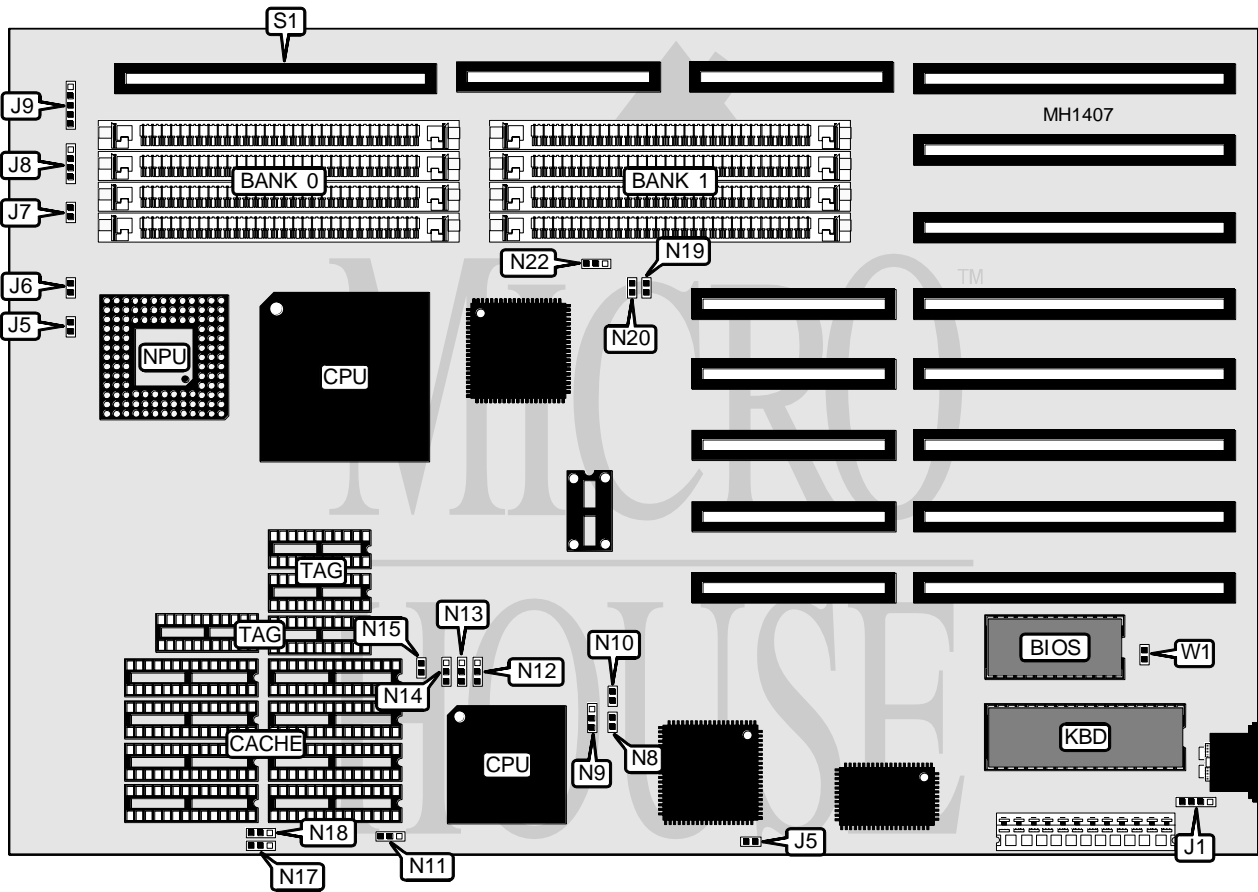


**JETPRO INFOTECH COMPANY, LTD.**  
**MB - 6 U ( MB - 4 5 0 C B U )**

<b>Processor</b>	80386DX/80486SX/80487SX/80486DX/80486DX2
<b>Processor Speed</b>	20/25/33/40/50(internal)/50/66(internal)MHz
<b>Chip Set</b>	UMC
<b>Max. Onboard DRAM</b>	64MB
<b>SRAM Cache</b>	64/256KB
<b>BIOS</b>	AMI
<b>Dimensions</b>	330mm x 218mm
<b>I/O Options</b>	32-bit proprietary local bus card
<b>NPU Options</b>	80387/3167



CONNECTIONS			
Purpose	Location	Purpose	Location
Reset switch	J5	Power LED & keylock	J9
Turbo LED	J6	External battery	J11
Turbo switch	J7	32-bit proprietary local bus card	S1
Speaker	J8		

Continued on next page . . .

## JETPRO INFOTECH COMPANY, LTD.

## MB - 6 U ( M B - 4 5 0 C B U )

... continued from previous page

USER CONFIGURABLE SETTINGS		
Function	Jumper	Position
í CMOS memory normal operation	W1	closed
CMOS memory clear	W1	open
í Monitor type select color	W2	closed
Monitor type select monochrome	W2	open
í Factory configured-do not alter	W3	open
í Tag mode select write back enabled (tag installed at U45)	W15	open
Tag mode select write back disabled (tag not installed at U45)	W15	open

DRAM CONFIGURATION		
Size	Bank 0	Bank 1
1MB	(4) 256K x 9	NONE
2MB	(4) 256K x 9	(4) 256K x 9
4MB	(4) 1M x 9	NONE
5MB	(4) 256K x 9	(4) 1M x 9
8MB	(4) 1M x 9	(4) 1M x 9
16MB	(4) 4M x 9	NONE
20MB	(4) 1M x 9	(4) 4M x 9
32MB	(4) 4M x 9	(4) 4M x 9

CPU JUMPER CONFIGURATION						
Size	OSC2	W5	W10	W11	W19	W22
80386DX/25	50MHz	open	N/A	N/A	open	N/A
80386DX/33	66MHz	open	N/A	N/A	open	N/A
80386DX/40	80MHz	open	N/A	N/A	open	N/A
80486SX/20	20MHz	open	open	pins 1 & 2	closed	1 & 2 and 3 & 4
80486SX/20	40MHz	open	open	pins 2 & 3	closed	1 & 2 and 3 & 4
80487SX/20	20MHz	closed	pins 2 & 3	pins 1 & 2	closed	1 & 2 and 3 & 4
80487SX/20	40MHz	closed	pins 2 & 3	pins 2 & 3	closed	1 & 2 and 3 & 4
80486DX/25	25MHz	open	pins 1 & 2	pins 1 & 2	closed	1 & 2 and 3 & 4
80486DX/25	50MHz	open	pins 1 & 2	pins 2 & 3	closed	1 & 2 and 3 & 4
80486DX/33	33MHz	open	pins 1 & 2	pins 1 & 2	closed	1 & 2 and 3 & 4
80486DX/33	66MHz	open	pins 1 & 2	pins 2 & 3	closed	1 & 2 and 3 & 4
80486DX/50	50MHz	open	pins 1 & 2	pins 1 & 2	closed	1 & 2 and 3 & 4

Note: Pins designated should be in the closed position

NPU JUMPER CONFIGURATION		
Size	W8	W20
80387	closed	closed
3167	open	open

Continued on next page ...

**JETPRO INFOTECH COMPANY, LTD.**  
**MB-6U (MB-450CBU)**

... continued from previous page

SRAM JUMPER CONFIGURATION				
Jumper	32KB	64KB	128KB	256KB
W12	pins 1 & 2 closed	pins 2 & 3 closed	pins 2 & 3 closed	pins 2 & 3 closed
W13	pins 1 & 2 closed	pins 1 & 2 closed	pins 2 & 3 closed	pins 2 & 3 closed
W14	pins 1 & 2 closed	pins 1 & 2 closed	pins 1 & 2 closed	pins 2 & 3 closed
W15	open	open	open	open
W17	pins 2 & 3 closed	pins 1 & 2 closed	pins 2 & 3 closed	pins 1 & 2 closed
W18	N/A	N/A	pins 1 & 2 closed	pins 2 & 3 closed

SRAM CONFIGURATION			
Size	Cache	Locations	TAG
32KB	(4) 8K x 8	Bank 0	(4) 16K x 4
64KB	(8) 8K x 8	Banks 0 & 1	(4) 16K x 4
128KB	(4) 32K x 8	Bank 0	(4) 16K x 4
256KB	(8) 32K x 8	Banks 0 & 1	(4) 16K x 4