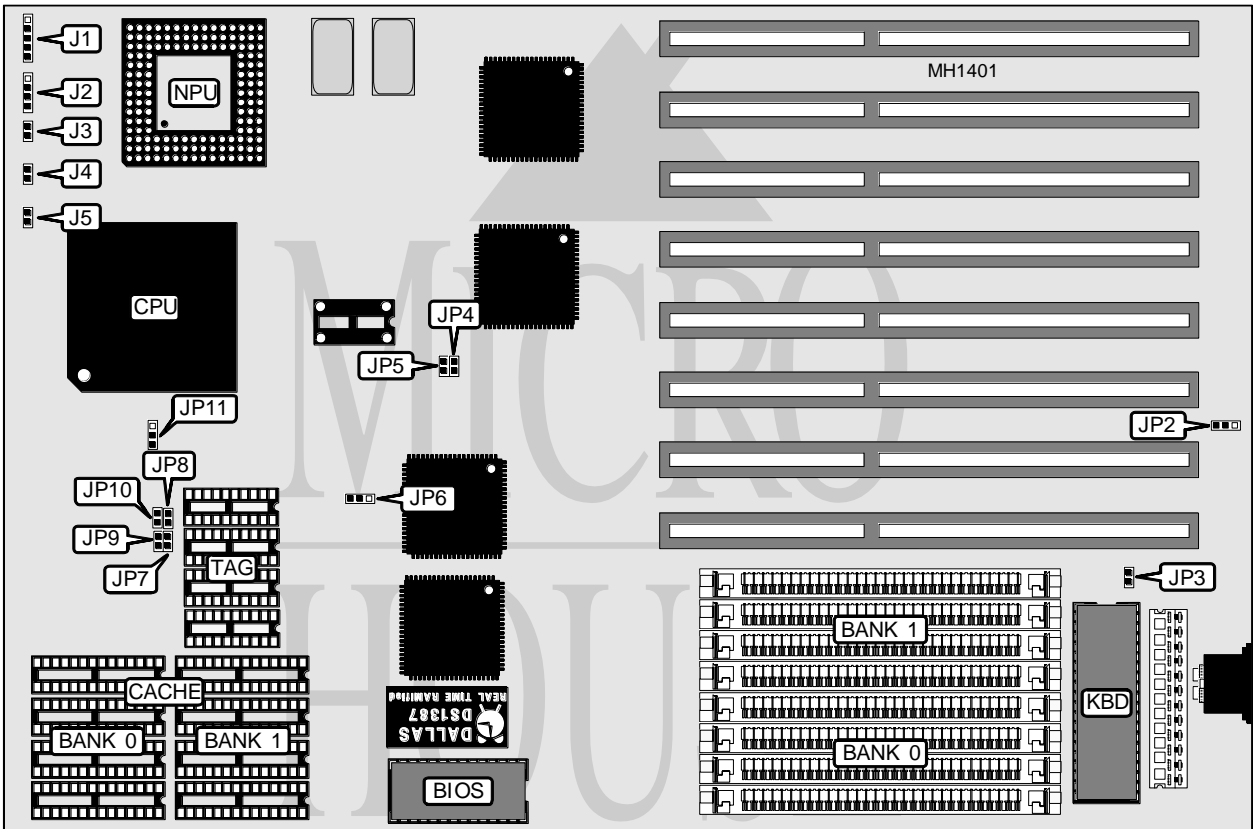


**JETPRO INFOTECH COMPANY, LTD.**  
**MB-60 EISA486/33/50**

<b>Processor</b>	80486DX/80486DX2
<b>Processor Speed</b>	33/50(internal)/50/66(internal)MHz
<b>Chip Set</b>	OPTI
<b>Max. Onboard DRAM</b>	128MB
<b>SRAM Cache</b>	64/128/256
<b>BIOS</b>	AMI
<b>Dimensions</b>	330.2mm x 218.4mm
<b>I/O Options</b>	None
<b>NPU Options</b>	4167



CONNECTIONS			
Purpose	Location	Purpose	Location
Power LED & keylock	J1	Turbo LED	J4
Speaker	J2	Reset switch	J5
Turbo switch	J3		

Continued on next page . . .

**JETPRO INFOTECH COMPANY, LTD.**  
**MB-60 EISA486/33/50**

... continued from previous page

USER CONFIGURABLE SETTINGS		
Function	Jumper	Position
í Power good signal detect from board	JP2	pins 1 & 2 closed
Power good signal detect from power supply	JP2	pins 2 & 3 closed
í Monitor type select color	JP3	closed
Monitor type select monochrome	JP3	open
ATCLK select iOSC/1	JP6	pins 1 & 2 closed
ATCLK select iOSC/2	JP6	pins 2 & 3 closed

DRAM CONFIGURATION		
Size	Bank 0	Bank 1
4MB	(4) 1M x 9	NONE
8MB	(4) 1M x 9	(4) 1M x 9
16MB	(4) 4M x 9	NONE
20MB	(4) 1M x 9	(4) 4M x 9
32MB	(4) 4M x 9	(4) 4M x 9
64MB	(4) 16M x 9	NONE
128MB	(4) 16M x 9	(4) 16M x 9

SRAM JUMPER CONFIGURATION			
Jumper	64KB	128KB	256KB
JP7	open	open	closed
JP8	open	open	closed
JP9	open	closed	closed
JP10	open	closed	closed
JP11	pins 2 & 3 closed	pins 1 & 2 closed	pins 2 & 3 closed

SRAM CONFIGURATION		
Size	Cache SRAM	Location
64KB	(8) 8K x 8	Banks 0 & 1
128KB	(4) 32K x 8	Bank 0
256KB	(8) 32K x 8	Banks 0 & 1

Note: The TAG memory does not need to be changed when upgrading.

CPU JUMPER CONFIGURATION		
CPU	JP4	JP5
80486DX2/66	closed	open
80486DX/50	closed	closed
80486DX2/50	open	open
80486DX/40	open	closed
80486DX/33	closed	open